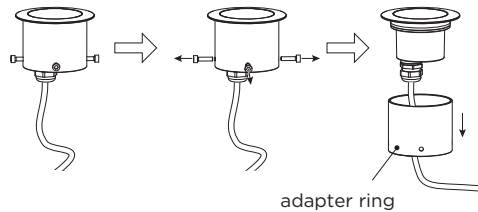


BLINK 1.0

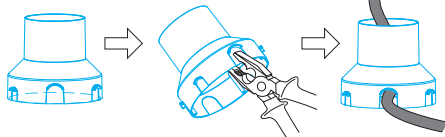
INSTALLATION INSTRUCTIONS | NOVEMBER 2023

With ground housing

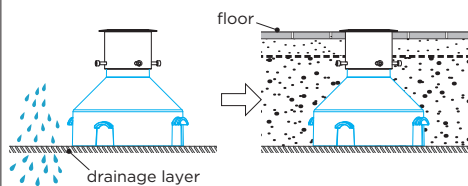


adapter ring

Cut an opening in the ground housing to easier guide the cable sideways.

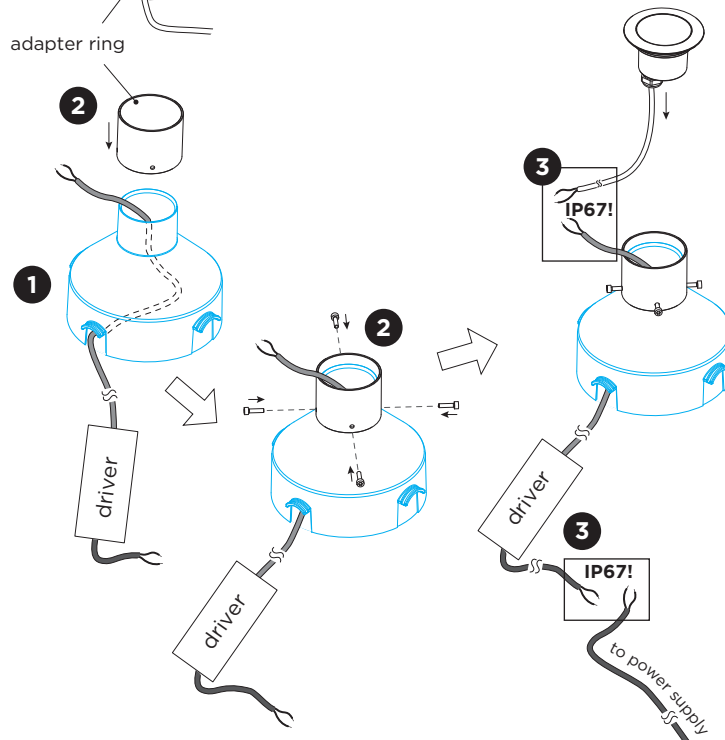
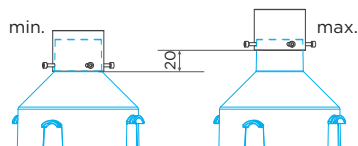


! The luminaire needs to be placed prior to constructing the floor.



! Drainage layer is necessary.

The position of the adapter is adjustable.



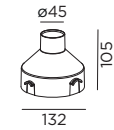
DIMENSIONS



1.0 TRIM



1.0 TRIMLESS



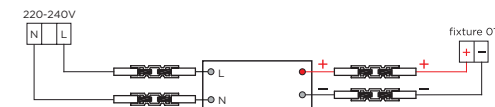
GROUND HOUSING

MOUNTING INSTRUCTION

- 1 Before constructing the floor, place the ground housing at the intended position.
- 2 Remove the adapter ring from the luminaire and put it at the top neck of the ground housing and then tighten it with the 4 screws.

3 POWER CONNECTION

Always use a driver according to the specifications of the LED module. Make sure to use a waterproof connection. Please see the detail method in the separate instruction sheet of waterproof connection.



- 4 When the construction of the floor is finished, the fixture will be recessed in the floor.

Included:
waterproof connect

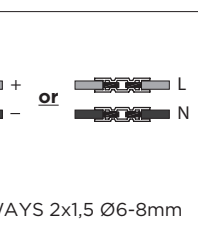
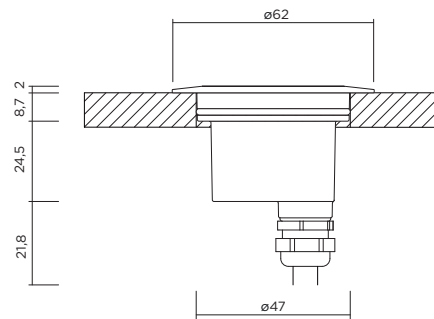
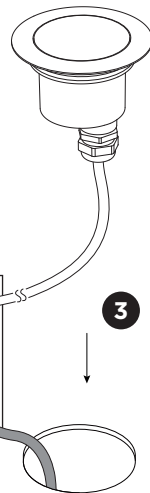
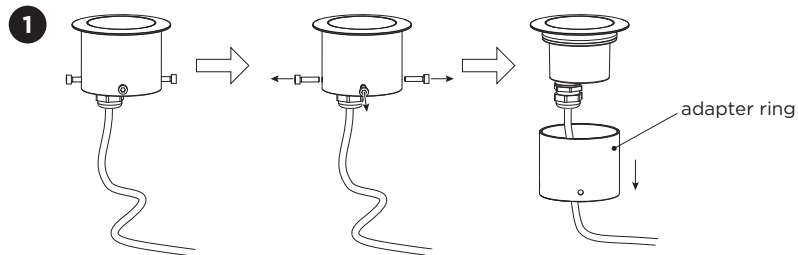
Optional:
IP68 connection box
order ref. 73240706

PE19-00-064-00_v1

BLINK 1.0

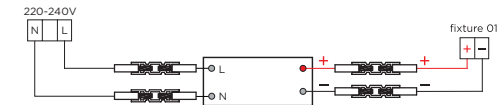
INSTALLATION INSTRUCTIONS | NOVEMBER 2023

Without ground housing
only for 1.0 TRIM



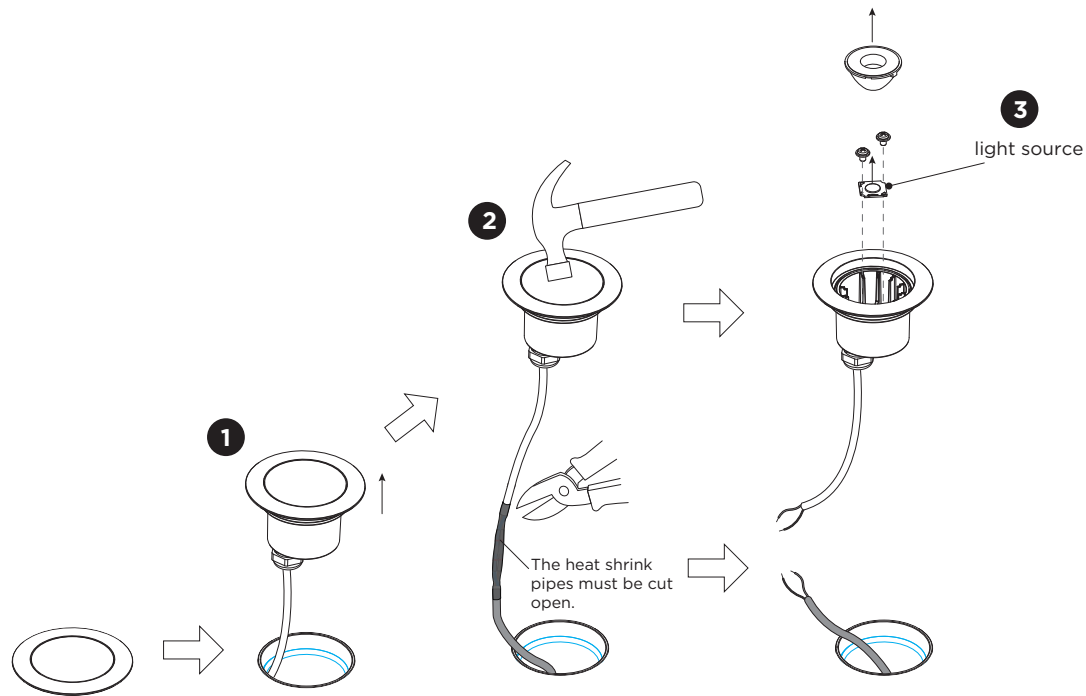
MOUNTING INSTRUCTION WITHOUT GROUND HOUSING
only for 1.0 TRIM

- 1 Remove the adapter ring from the luminaire.
- 2 **POWER CONNECTION**
Always use a driver according to the specifications of the LED module. Make sure to use a waterproof connection. Please see the detail method in the separate instruction sheet of waterproof connection.
- 3 Place the luminaire into the hole. No tool is needed to fix the luminaire as it will rest on the frame.



BLINK 1.0

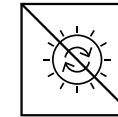
INSTALLATION INSTRUCTIONS | NOVEMBER 2023



DISMOUNTING AND RECYCLING INSTRUCTIONS

Light source

- 1 Pull the luminaire out from the ground hole, loosen cable from the waterproof connection.
- 2 Break the glass.
- 3 Remove the lens and the screws, disconnect the wires and remove the light source.



The light source is not replaceable.



This luminaire contains a light source with the energy class D.



WEVER & DUCRÉ
LIGHTING

WEVER & DUCRÉ BV

Spinnerijstraat 99/21, 8500 Kortrijk, Belgium
weverducre.com