

MIRAGE Collection

MIRAGE W is a lamp with an outstanding performance. Enjoy this design based on technical precision and superb light. The design is contemporary, yet classic defined by pure lines and elegant shapes.

General use

- The product is designed for indoor use only.
- The lamp gets hot after prolonged use, therefore, do not cover the product.

Cleaning instructions

- Before cleaning, ensure that the power supply is switched off.
- Wipe surface of lamp shade with a soft cloth.
- Do not use any abrasive cleaning tools such as steel wool, scouring sponges or stiff brushes.
- Never use strong cleaning agents such as white spirit, household glass cleaner or cellulose thinners.

Safety precautions

- The appliance should be installed, connected and tested by qualified electrician and in accordance with local regulations.
- Turn off the power supply before installation or maintenance of the lamp, and make sure that the cables are not squeezed or damaged by sharp edges during installation.
- The lamp should not be covered by insulation blankets or similar materials.

International warranty

Your product has gone through rigorous testing in order to live up to the highest quality standards. It therefore carries a 7-year warranty from the date of the original retail purchase receipt, covering defects in materials and workmanship when used normally in accordance with the published LIGHT-POINT guidelines.

These guidelines include but are not limited to information contained in technical specifications, safety instructions and quick start guides. LIGHT-POINT is not responsible for damage arising from failure to follow instructions relating to the use of the product.

LIGHT-POINT is a registered trademark of NORDIC LIVING GROUP.

For more information, please visit
LIGHT-POINT.COM

MIRAGE W

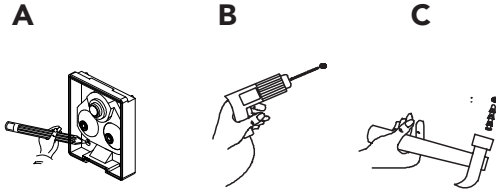
User Instructions



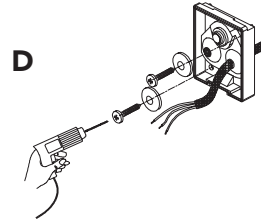
Installation instructions (Wall mount)

NOTE: Before installing, make sure the power supply is switched off.

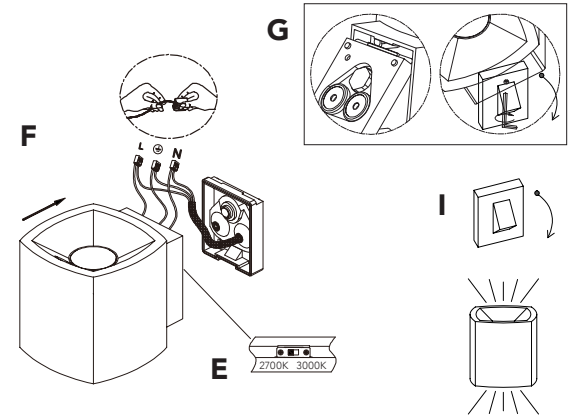
Follow the steps below to mount the lamp using only the wall mount.



- 1** **A:** Mark installation holes with a pen.
B: Drill the marked holes with Ø5 drill bit.
C: Push the screw anchors into the mounting holes.



- 2** **D:** Pull the cable through the wall mount and lock the wall mount with screws and waterproof spacers.

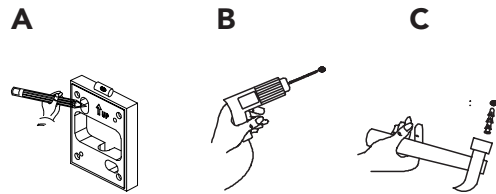


- 3** **E:** Choose between 2700K or 3000K.
F: Connect the power cord and the input line of the lamp body into the terminal according to the identification to fix it.
G: Hook the upper part of the lamp body into the wall mount and then close the lamp body. Tighten the screw below the lamp to secure mounting.
H: Turn on the main power switch. Installation is complete.

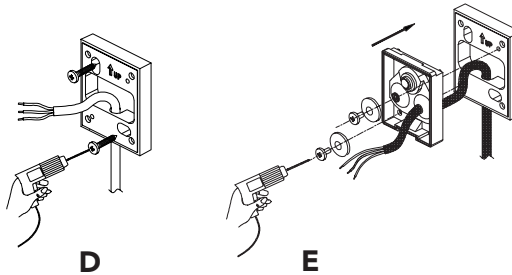
Installation instructions (Fixing plate)

NOTE: Before installing, make sure the power supply is switched off.

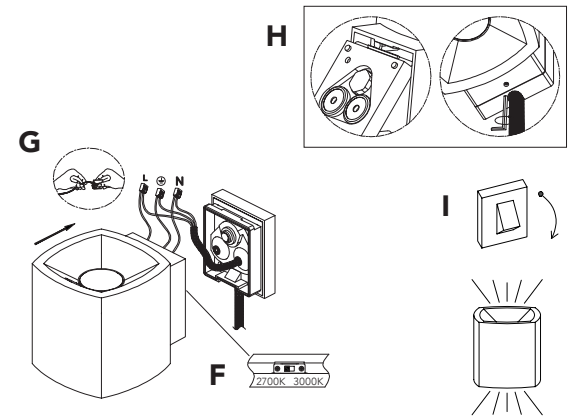
Follow the steps below to mount the lamp using the fixingplate and the wall mount.



- 1** **A:** Mark installation holes with a pen.
B: Drill the marked holes with Ø5 drill bit.
C: Push the screw anchors into the mounting holes.



- 2** **D:** Push the cable from the bottom through the fixing plate and screw to the wall.
E: Then make the cable through the wall mount and lock the wall mount to the fixing plate with screws and waterproof spacers.



- 3** **F:** Choose between 2700K or 3000K.
G: Connect the power cord and the input line of the lamp body into the terminal according to the identification to fix it.
H: Hook the upper part of the lamp body into the wall mount and then close the lamp body. Tighten the screw below the lamp to secure mounting.
I: Turn on the main power switch. Installation is complete.