

Array

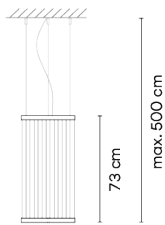
1800

Design By Umut Yamac

The Array pendant lamp includes a series of technical filaments that are pulled taut between two rings through which the light rises creating a colour gradient. The cylindrical shape and intimate size make it perfect for small scale spaces.

VIBIA

Model Sheet



Ø 37 cm

Optional: Extra cable length
Min. quantity, upcharge and extra lead time apply

Finish

- 24 Beige M1
NCS S 2005-Y50R
- 37 Terra Red
NCS S 4040-Y70R
- 47 Green L1
NCS S 4005-G80Y

LED temperature color 2700 K

Dimming Push; DALI / Casambi / 1-10V

Installation type Surface Canopy / Remote Micro / Built-in S

Materials Upper ring: Aluminum
Bottom ring: Brass
Diffuser: PC- Polycarbonate
Threads: PES FR

Light source 1 x LED STRIP 22W 48V



LED CRI>90 2662 lm 121
2700 K

Driver Constant Voltage 90~305 V V
50~60 Hz HZ

Dimmable IP20 Multi-volt

50-60Hz 1-10V

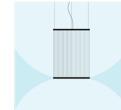
Application Hanging lamps

Packaging 1 Box
0.12 m x 0.62 m x 0.62 m
Gross weight 7
Net weight 4.8
Vol. 0.0461

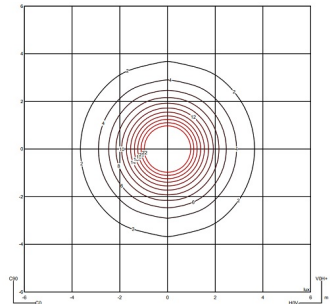
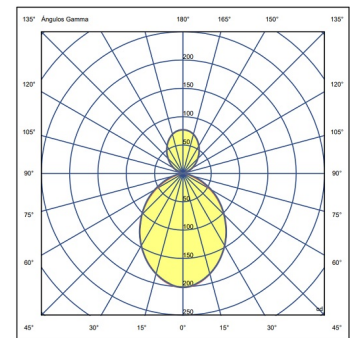
Lighting effect

Volumetric Diffuser

Subtly directed, diffused light that generates a soft hierarchy of light on to the illuminated surface

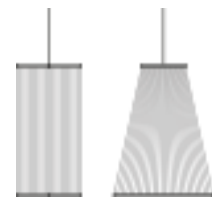


Photometric Data



Efficiency 26.94 lm/W
Coordinate System CG
Total Flux 592.57 lm
Maximum Value 201.28 cd

Other Applications



All of our products come with a five-year warranty. Check our legal terms at www.vibia.com/warranty

Vibia Lighting, S.L.U.

Office / Oficina
Progrés 4-6. 08850 Gavà. Barcelona, Spain.

International T +34 934 796 971
Spain / Portugal T +34 934 796 970

customer.service@vibia.com
vibia.com