

# Array

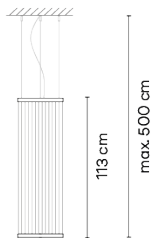
## 1805

Design By Umut Yamac

The hanging Array lamp combines a series of fine technical filaments between two rings. Indirect light rises through the cylindrical shape forming a colour gradient.

# VIBIA

## Model Sheet



Ø 37 cm

**Optional: Extra cable length**  
Min. quantity, upcharge and extra lead time apply

**Finish**

- 24 Beige M1  
NCS S 2005-Y50R
- 37 Terra Red  
NCS S 4040-Y70R
- 47 Green L1  
NCS S 4005-G80Y

**LED temperature color** 2700 K

**Dimming** Push; DALI / 1-10V / Casambi

**Installation type** Surface Canopy / Built-in S / Remote Micro

**Materials**

- Upper ring: Aluminum
- Bottom ring: Brass
- Diffuser: PC- Polycarbonate
- Threads: PES FR

**Light source** 1 x LED STRIP 22W 48V



**LED** CRI>90 2662 lm 121 2700 K

**Driver** Constant Voltage 90~305 V V  
50~60 Hz HZ

Dimmable IP20 Multi-volt

50-60Hz 1-10V

**Application** Hanging lamps

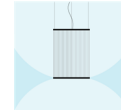
**Packaging**

- 1 Box
- 0.12 m x 0.62 m x 0.62 m
- Gross weight 7.3
- Net weight 5.1
- Vol. 0.0461

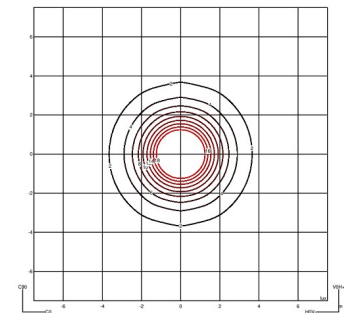
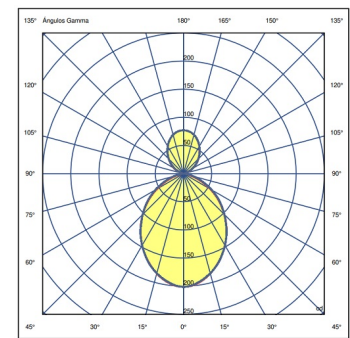
### Lighting effect

#### Volumetric Diffuser

Subtly directed, diffused light that generates a soft hierarchy of light on to the illuminated surface

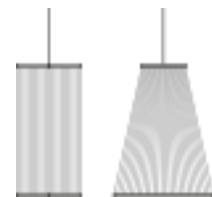


### Photometric Data



**Efficiency** 26.935 lm/W  
**Coordinate System** CG  
**Total Flux** 593 lm  
**Maximum Value** 201.28 cd

### Other Applications



All of our products come with a five-year warranty. Check our legal terms at [www.vibia.com/warranty](http://www.vibia.com/warranty)

Vibia Lighting, S.L.U.

Office / Oficina  
Progrés 4-6. 08850 Gavà. Barcelona, Spain.

International T +34 934 796 971  
Spain / Portugal T +34 934 796 970

customer.service@vibia.com  
vibia.com