

# Array

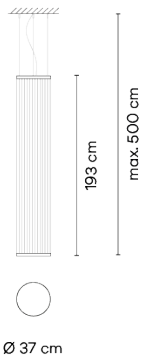
1810

Design By Umut Yamac

The large scale hanging cylindrical silhouette Array lamp wraps around the space rather than dominating it thanks to its spacious format of filaments that create a transparency through the volume it occupies.

VIBIA

## Model Sheet



**Optional: Extra cable length**  
Min. quantity, upcharge and extra lead time apply

**Finish**

- 24 Beige M1  
NCS S 2005-Y50R
- 37 Terra Red  
NCS S 4040-Y70R
- 47 Green L1  
NCS S 4005-G80Y

**LED temperature color** 2700 K

**Dimming** Casambi / Push; DALI / 1-10V

**Installation type** Surface Canopy / Remote Micro / Built-in S

**Materials** Upper ring: Aluminum  
Bottom ring: Brass  
Diffuser: PC- Polycarbonate  
Threads: PES FR

**Light source** 1 x LED STRIP 22W 48V



**LED** CRI>90 2662 lm 121  
2700 K

**Driver** Constant Voltage 90-305 V V  
50-60 Hz HZ

Dimmable IP20 Multi-volt  
 50-60Hz 1-10V

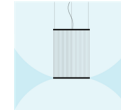
**Application** Hanging lamps

**Packaging** 1 Box  
0.12 m x 0.62 m x 0.62 m  
Gross weight 7.6  
Net weight 5.4  
Vol. 0.0461

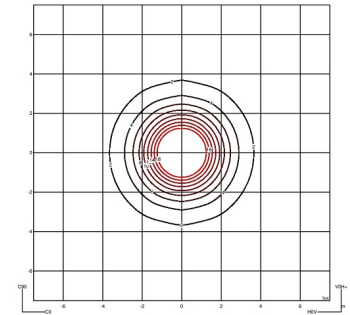
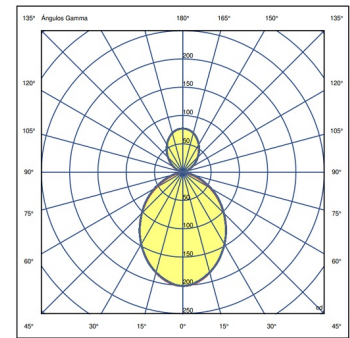
### Lighting effect

#### Volumetric Diffuser

Subtly directed, diffused light that generates a soft hierarchy of light on to the illuminated surface

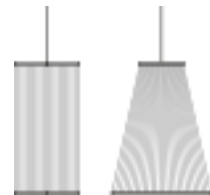


### Photometric Data



**Efficiency** 26.935 lm/W  
**Coordinate System** CG  
**Total Flux** 593 lm  
**Maximum Value** 201.28 cd

### Other Applications



All of our products come with a five-year warranty. Check our legal terms at [www.vibia.com/warranty](http://www.vibia.com/warranty)

Vibia Lighting, S.L.U.

Office / Oficina  
Progrés 4-6. 08850 Gavà. Barcelona, Spain.

International T +34 934 796 971  
Spain / Portugal T +34 934 796 970

customer.service@vibia.com  
vibia.com