

# Array

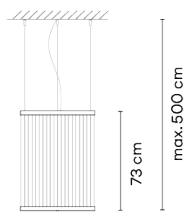
VIBIA

1815

Design By Umut Yamac

The hanging Array lamp includes a series of fine technical filaments pulled taut between two rings, where the light rises upwards creating a colour gradient. The cylindrical form and the intimate dimensions make it ideal for small spaces.

## Model Sheet



Ø 55 cm

**Optional: Extra cable length**  
Min. quantity, upcharge and extra lead time apply

**Finish**

- 24 Beige M1  
NCS S 2005-Y50R
- 47 Green L1  
NCS S 4005-G80Y
- 37 Terra Red  
NCS S 4040-Y70R

**LED temperature color** 2700 K

**Dimming** Push; DALI / Casambi / 1-10V

**Installation type** Built-in S / Remote Micro / Surface Canopy

**Materials** Upper ring: Aluminum  
Bottom ring: Brass  
Diffuser: PC- Polycarbonate  
Threads: PES FR

**Light source** 1 x LED STRIP 33W 48V



**LED** CRI>90 3993 lm 121 2700 K

**Driver** Constant Voltage 90~305 V V  
50~60 Hz HZ

Dimmable IP20 Multi-volt

50-60Hz 1-10V

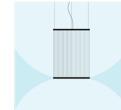
**Application** Hanging lamps

**Packaging** 1 Box  
0.12 m x 0.62 m x 0.62 m  
Gross weight 8.4  
Net weight 6.2  
Vol. 0.0461

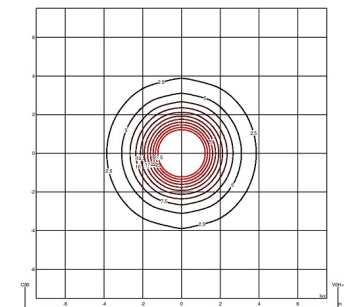
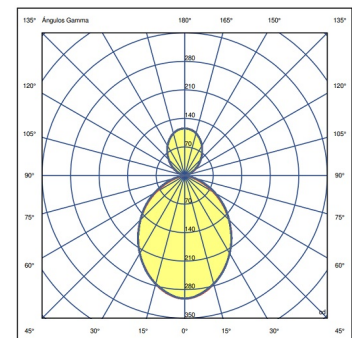
### Lighting effect

#### Volumetric Diffuser

Subtly directed, diffused light that generates a soft hierarchy of light on to the illuminated surface

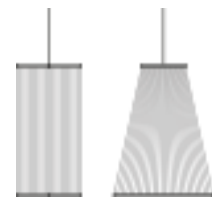


### Photometric Data



**Efficiency** 26.935 lm/W  
**Coordinate System** CG  
**Total Flux** 593 lm  
**Maximum Value** 201.28 cd

### Other Applications



All of our products come with a five-year warranty. Check our legal terms at [www.vibia.com/warranty](http://www.vibia.com/warranty)

Vibia Lighting, S.L.U.

Office / Oficina  
Progrés 4-6. 08850 Gavà. Barcelona, Spain.

International T +34 934 796 971  
Spain / Portugal T +34 934 796 970

customer.service@vibia.com  
vibia.com