

Array

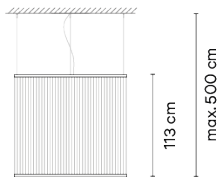
1840

Design By Umut Yamac



The hanging Array lamp combines a series of fine technical filaments between two rings. The indirect lighting rises through the cylindrical form creating a colour gradient.

VIBIA

Model Sheet



Optional: Extra cable length
Min. quantity, upcharge and extra lead time apply

Finish	 37 Terra Red NCS S 4040-Y70R
	 47 Green L1 NCS S 4005-G80Y
	 24 Beige M1 NCS S 2005-Y50R

LED temperature color 2700 K

Dimming Casambi / Push; DALI / 1-10V

Installation type Surface Canopy / Remote Micro / Built-in S

Materials Upper ring: Aluminum
Bottom ring: Brass
Diffuser: PC- Polycarbonate
Threads: PES FR

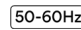
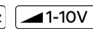
Light source 1 x LED STRIP 76W 48V



LED CRI>90 9196 lm 121
2700 K

Driver Constant Voltage 90~305 V V
50~60 Hz HZ

 Dimmable  IP20  Multi-volt

 50-60Hz  1-10V

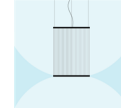
Application Hanging lamps

Packaging 1 Box
0.12 m x 1.35 m x 1.35 m
Gross weight 23
Net weight 13
Vol. 0.2187

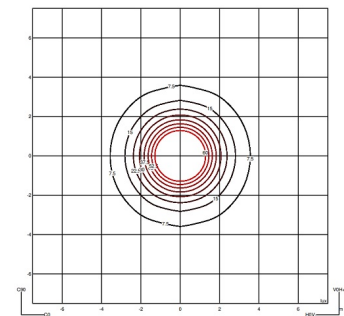
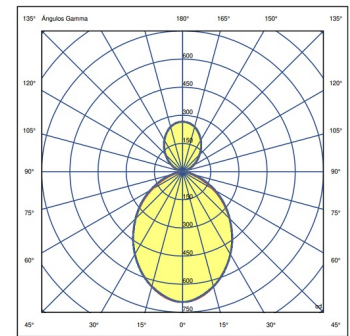
Lighting effect

Volumetric Diffuser

Subtly directed, diffused light that generates a soft hierarchy of light on to the illuminated surface

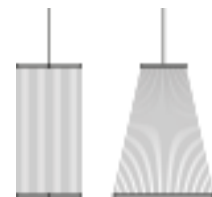


Photometric Data



Efficiency 26.935 lm/W
Coordinate System CG
Total Flux 593 lm
Maximum Value 201.28 cd

Other Applications



All of our products come with a five-year warranty. Check our legal terms at www.vibia.com/warranty

Vibia Lighting, S.L.U.

Office / Oficina
Progrés 4-6. 08850 Gavà. Barcelona, Spain.

International T +34 934 796 971
Spain / Portugal T +34 934 796 970

customer.service@vibia.com
vibia.com