

Array

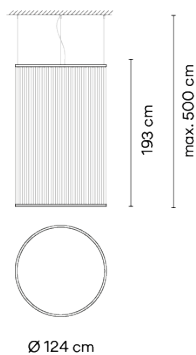
VIBIA

1845

Design By Umut Yamac

The large-scale cylindrical silhouette hanging Array lamp wraps around the space rather than dominating it thanks to the spacious spread of the filament creating a translucence through the volume it occupies.

Model Sheet



Optional: Extra cable length
Min. quantity, upcharge and extra lead time apply

Finish

- 47 Green L1
NCS S 4005-G80Y
- 37 Terra Red
NCS S 4040-Y70R
- 24 Beige M1
NCS S 2005-Y50R

LED temperature color 2700 K

Dimming Push; DALI / Casambi / 1-10V

Installation type Remote Micro / Surface Canopy / Built-in S

Materials

- Upper ring: Aluminum
- Bottom ring: Brass
- Diffuser: PC- Polycarbonate
- Threads: PES FR

Light source 1 x LED STRIP 6,3W 350mA



LED CRI>90 9196 lm 121 2700 K

Driver Constant Voltage 90~305 V V
50~60 Hz HZ

Dimmable IP20 50-60Hz

1-10V

Application Hanging lamps

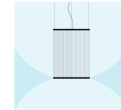
Packaging

- 1 Box
- 0.12 m x 1.35 m x 1.35 m
- Gross weight 23.9
- Net weight 13.9
- Vol. 0.2187

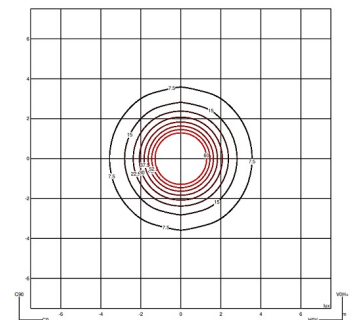
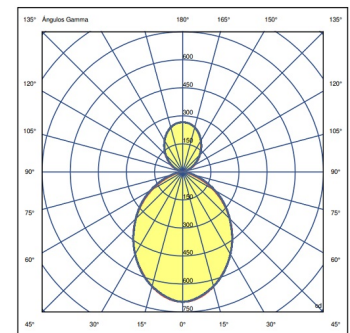
Lighting effect

Volumetric Diffuser

Subtly directed, diffused light that generates a soft hierarchy of light on to the illuminated surface

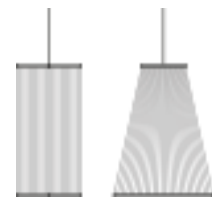


Photometric Data



Efficiency 26.935 lm/W
Coordinate System CG
Total Flux 593 lm
Maximum Value 201.28 cd

Other Applications



All of our products come with a five-year warranty. Check our legal terms at www.vibia.com/warranty

Vibia Lighting, S.L.U.

Office / Oficina
Progrés 4-6. 08850 Gavà. Barcelona, Spain.

International T +34 934 796 971
Spain / Portugal T +34 934 796 970

customer.service@vibia.com
vibia.com