

Array

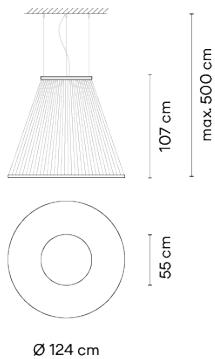
1875

Design By Umut Yamac




The hanging Array lamp combines a series of fine technical filaments between two rings. The indirect light rises through its conical shape creating a colour gradient. The combination of shape, texture and luminosity offers an ephemeral visual sensation.

VIBIA

Model Sheet



Optional: Extra cable length
Min. quantity, upcharge and extra lead time apply

Finish	 47 Green L1 NCS S 4005-G80Y
	 24 Beige M1 NCS S 2005-Y50R
	 37 Terra Red NCS S 4040-Y70R
LED temperature color	2700 K
Dimming	Casambi / Push; DALI / 1-10V
Installation type	Remote Micro / Built-in S / Surface Canopy

Materials
Upper ring: Aluminum
Bottom ring: Brass
Diffuser: PC- Polycarbonate
Threads: PES FR

Light source
1 x LED STRIP 76W 48V



LED
CRI>90 9196 lm 121
2700 K

Driver
Constant Voltage 90~305 V V
50~60 Hz HZ



Application
Hanging lamps

Packaging
1 Box
0.12 m x 1.35 m x 1.35 m
Gross weight 21.9
Net weight 11.9
Vol. 0.2187

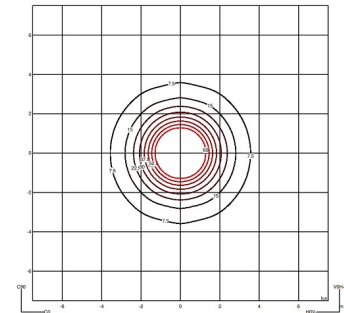
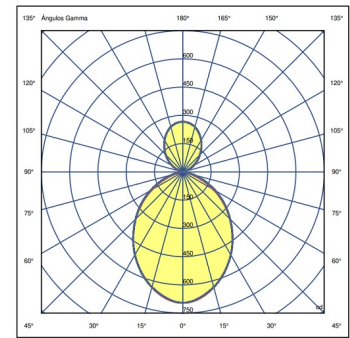
Lighting effect

Volumetric Diffuser

Subtly directed, diffused light that generates a soft hierarchy of light on to the illuminated surface

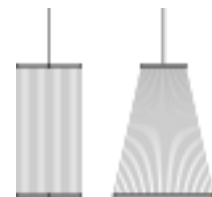


Photometric Data



Efficiency	26.935 lm/W
Coordinate System	CG
Total Flux	593 lm
Maximum Value	201.28 cd

Other Applications



All of our products come with a five-year warranty. Check our legal terms at www.vibia.com/warranty

Vibia Lighting, S.L.U.

Office / Oficina
Progrés 4-6. 08850 Gavà. Barcelona, Spain.

International T +34 934 796 971
Spain / Portugal T +34 934 796 970

customer.service@vibia.com
vibia.com