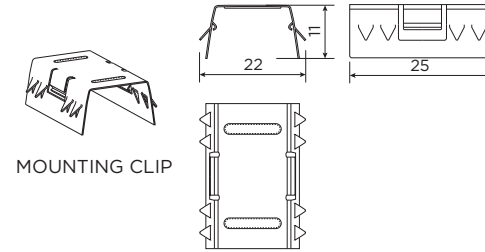
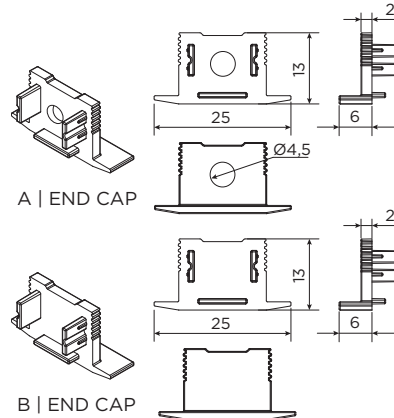
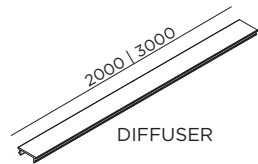
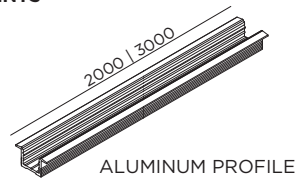


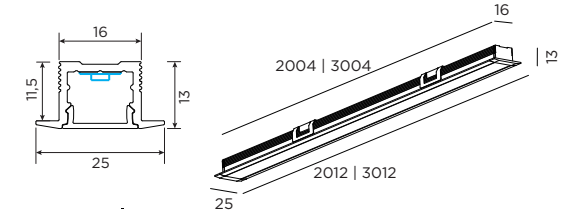
ILANE 4.0

INSTALLATION INSTRUCTIONS | MARCH 2023

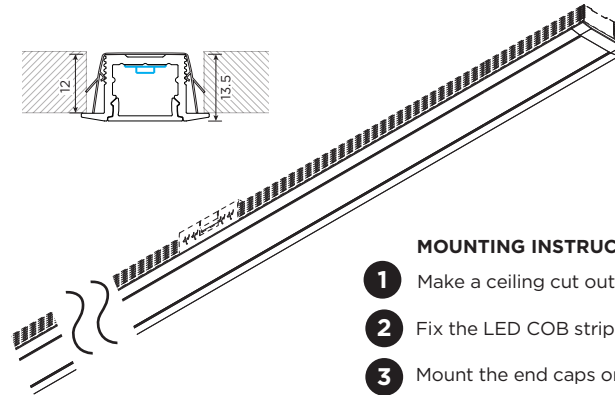
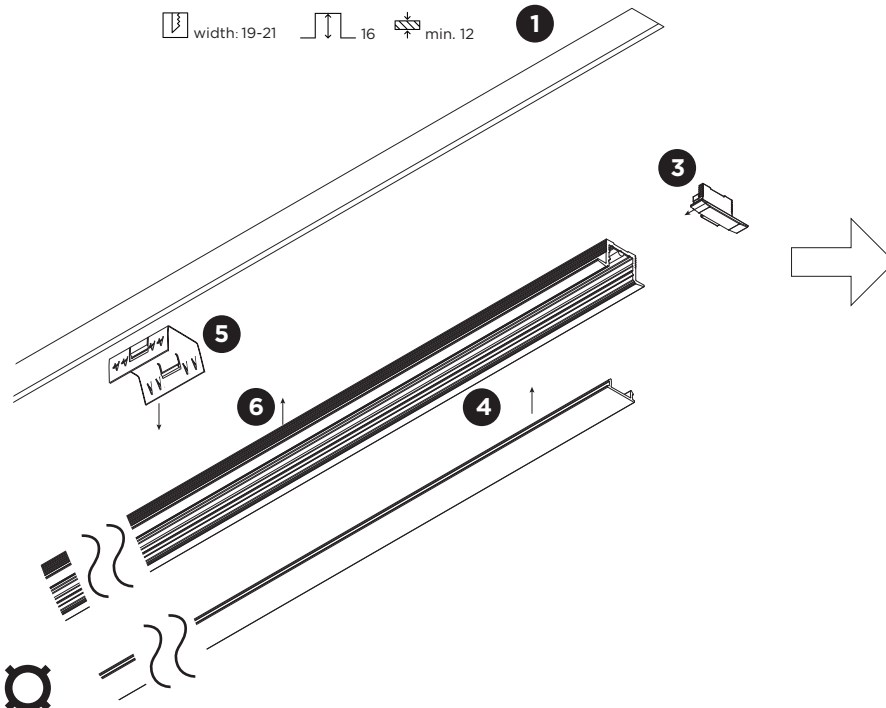
COMPONENTS



DIMENSIONS



model	content				
	profile	diffuser	closed end cap	end cap with hole	mounting clips
2000mm	1	1	2	1	5
3000mm	1	1	2	1	7

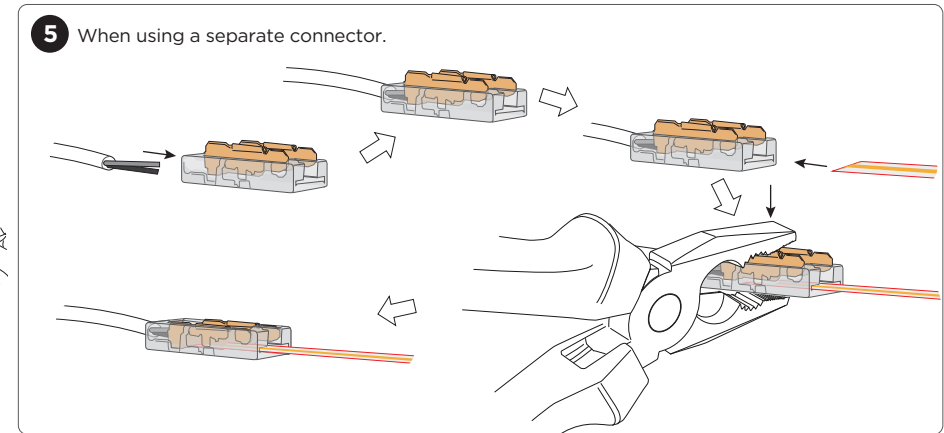
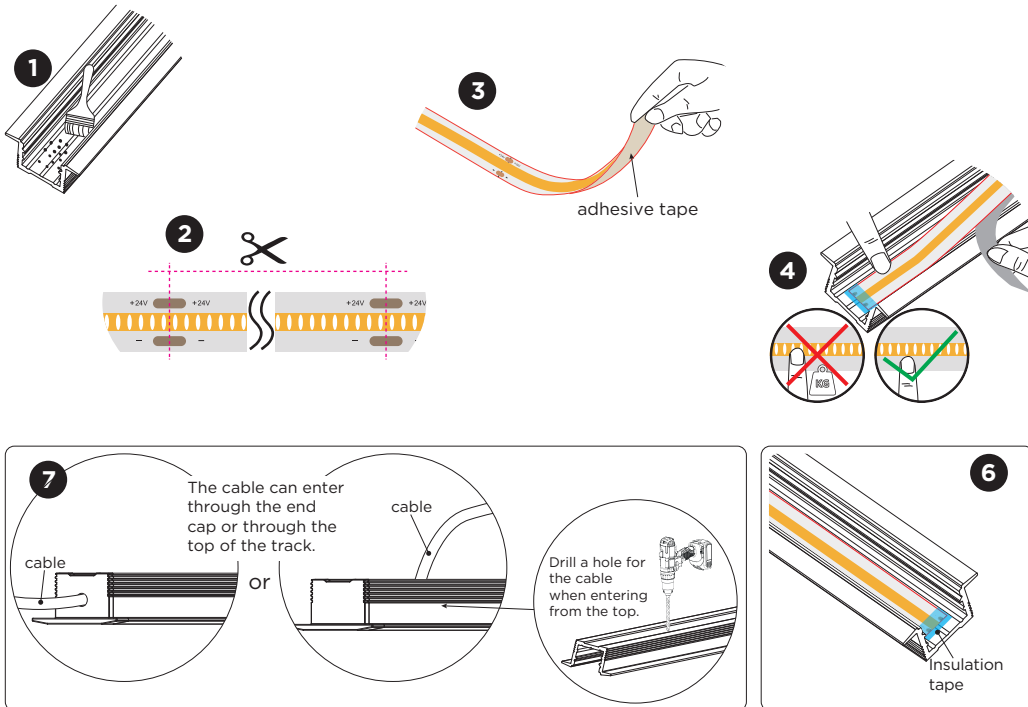


MOUNTING INSTRUCTION

- 1 Make a ceiling cut out according to the specifications.
- 2 Fix the LED COB strip into the profile (see page 2).
- 3 Mount the end caps on the ends of the profile.
- 4 Insert the diffuser into the profile.
- 5 Click the mounting clips on the profile every half meter. Alternatively fix the profile to the surface by means of double sided tape or glue.
- 6 Push the assembled profile into the ceiling cut out.

ILANE 4.0

INSTALLATION INSTRUCTIONS | MARCH 2023



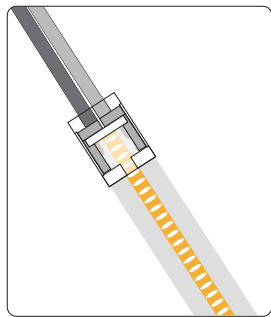
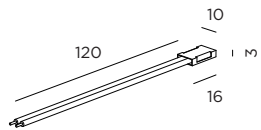
- 1** Inner profile surface must be cleaned and free from grease / dust.
- 2** LED COB strip can be cut to length:
10W/M version = every 50,00mm
15W/M version = every 31,20mm
- 3** Adhesive side on the LED COB strip for easy fixation.
- 4** LED COB strip needs to be pushed on gently and not with tools.
- 5** Fix the electrical connector to the COB LED strip as illustrated.
- 6** The non-conductor side of the LED COB strip should be electrically isolated so that the LED copper conductors cannot touch the profile.
- 7** Cable can go through end cap with hole or alternatively a hole can be drilled in the profile to enter with the cable through the back side.
- 8** LED COB strip polarity needs to be respected when connecting to a driver.

ILANE 4.0

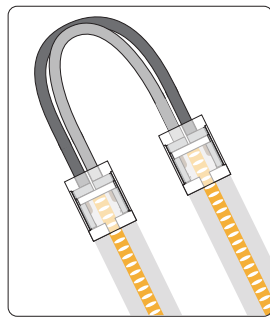
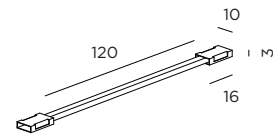
INSTALLATION INSTRUCTIONS | MARCH 2023

LED COB strip connectors:

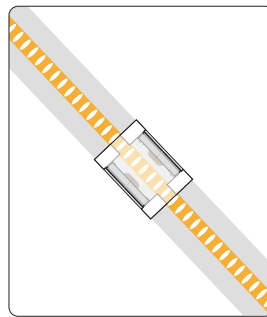
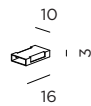
from strip to driver



from strip to strip
e.g. in a corner



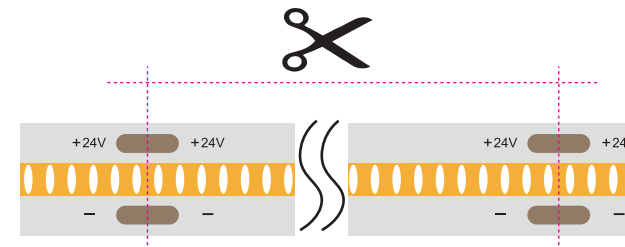
from strip to strip:
making continuous lines



LED COB strip can be cut to length:

10W/M version = every 50mm

15W/M version = every 31,20mm



When cutting the strip it is important to cut precisely between 2 LEDs.
When an LED is exposed there is no phosphor covering the side which will show blue light coming out of the cut side of the strip.

