

RP 195

catalogue 2024 p. 92

ref. 153015082

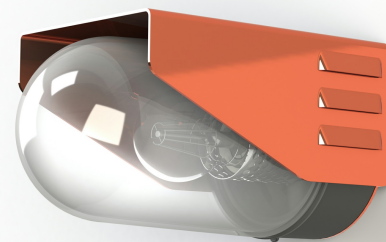
EAN. 3663660325905

Model 3

Technical data

| | |
|-------------------------------|----------------------------------|
| Rated voltage | 12-24V |
| Input voltage range | 10-30V AC/DC |
| Driver output | - |
| Alimentation output | - |
| Class | 3 |
| IP | 65 |
| IK | - |
| Diffuser | Clear glass |
| Bulb cover | - |
| Source | E27 |
| Color temperature real output | - |
| Real light output | - lm |
| Total consumption | - W |
| Standby power | - |
| Energy class | Classe de la lampe (non fournie) |
| Luminous efficacy | - |
| IRC | - |
| SDCM | - |
| Optic | - |
| Dimmable | - |
| Ta | - |
| Tc | - |
| Led lifetime | - |
| Ambient temperature range | -10 ~50°C |
| UGR | - |
| ULR | - |
| THDI | - |
| Fixing kit | Yes |
| With sensor | No |
| With IP55 socket | No |

[Download the installation manual](#)



RP 195

catalogue 2024 p. 92

ref. 153015082

EAN. 3663660325905

Model 3



Materials and finishes

| | |
|----------|------------------|
| Material | copper |
| Colour | Raw copper - 082 |

Logistic data

| | |
|----------------------|-------------------|
| Product dimensions | H.131 L.145 P.240 |
| Net weight | 2.230 Kg |
| Gross weight | 2.710 Kg |
| Package dimensions 1 | H.410 L.240 P.200 |

Certifications and warranties

| | |
|----------------|---------|
| CE | Yes |
| UL | No |
| EAC | Yes |
| RoHS | Yes |
| ENEC | No |
| Anti-corrosion | 3 years |
| Technical | 5 years |
| Electronics | 5 years |