

# RP 195

catalogue 2024 p. 92

ref. 153016082

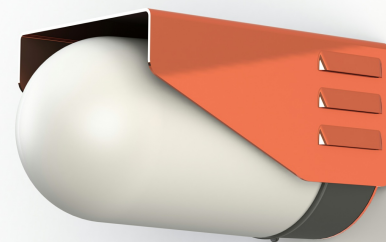
EAN. 3663660326032

Model 3

## Technical data

Rated voltage	12-24V
Input voltage range	10-30V AC/DC
Driver output	-
Alimentation output	-
Class	3
IP	65
IK	-
Diffuser	Frosted glass
Bulb cover	-
Source	E27
Color temperature real output	-
Real light output	- lm
Total consumption	- W
Standby power	-
Energy class	Classe de la lampe (non fournie)
Luminous efficacy	-
IRC	-
SDCM	-
Optic	-
Dimmable	-
Ta	-
Tc	-
Led lifetime	-
Ambient temperature range	-10 ~50°C
UGR	-
ULR	-
THDI	-
Fixing kit	Yes
With sensor	No
With IP55 socket	No

[Download the installation manual](#)



# RP 195

catalogue 2024 p. 92

ref. 153016082

EAN. 3663660326032

Model ③



## Materials and finishes

Material	copper
Colour	Raw copper - 082

## Logistic data

Product dimensions	H.131 L.145 P.240
Net weight	2.230 Kg
Gross weight	2.710 Kg
Package dimensions 1	H.410 L.240 P.200

## Certifications and warranties

CE	Yes
UL	No
EAC	Yes
RoHS	Yes
ENEC	No
Anti-corrosion	25 years (on Aluminium)
Technical	5 years
Electronics	5 years