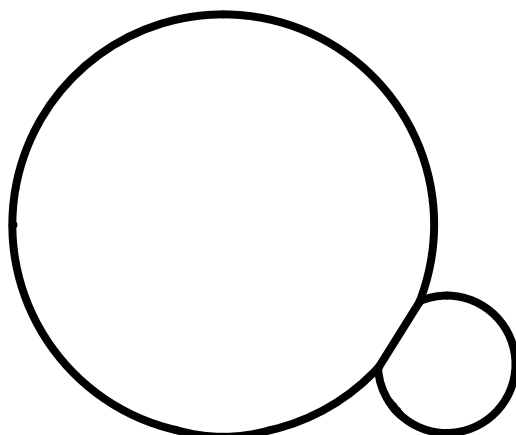


COPYCAT

Designed by Michael Anastassiades, 2015

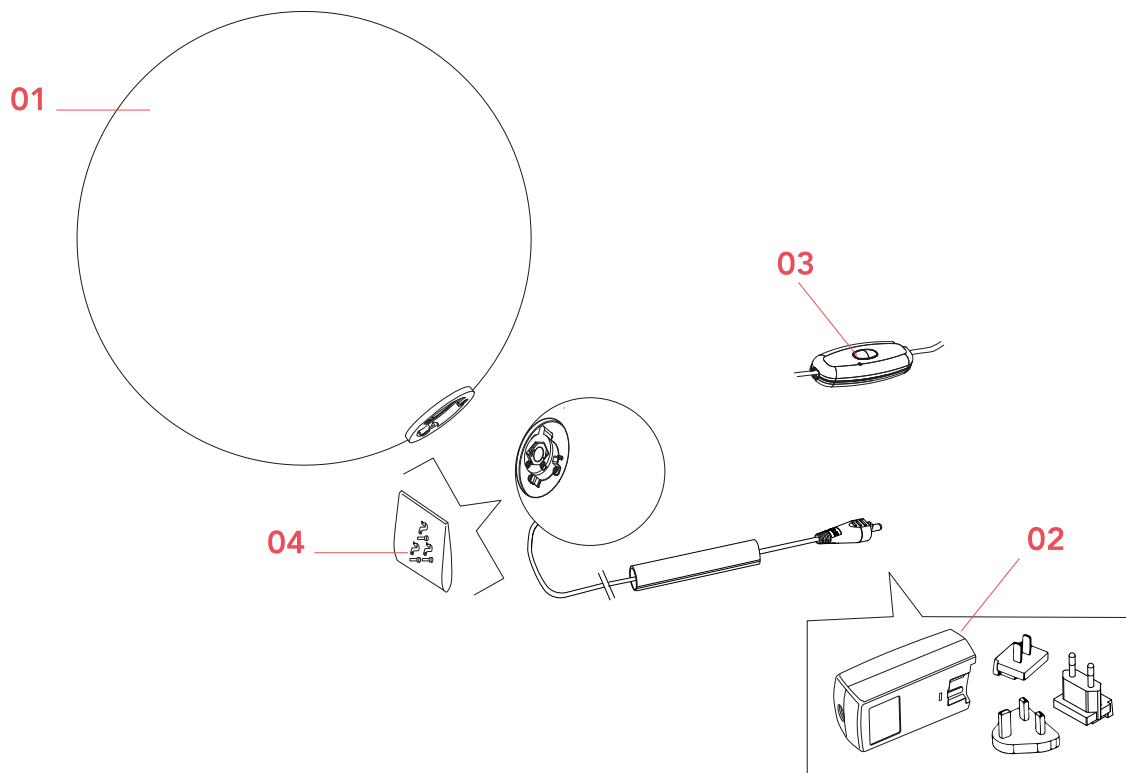
F1952044



COPYCAT

F1952044

EN



01.F1950009 – White glass diffuser

02. RF3320100 – Black Plug & kit driver

03. RF6605100 – Jack plug with coaxial cable and dimmer

04. RF1951100 – Kit of snap springs and fixing screws

COPYCAT F1952044

EN

F1950009

WHITE GLASS DIFFUSER



WARNING! When installing and whenever acting on the appliance, ensure that the power supply has been switched off.
For the installation of the spare-part, it is necessary to consult a qualified electrician.

©2021 Flos - All rights reserved - www.flos.com
Flos reserves the right to introduce any changes to its own models, without prior notice.

COPYCAT F1952044

EN

F1950009

WHITE GLASS DIFFUSER

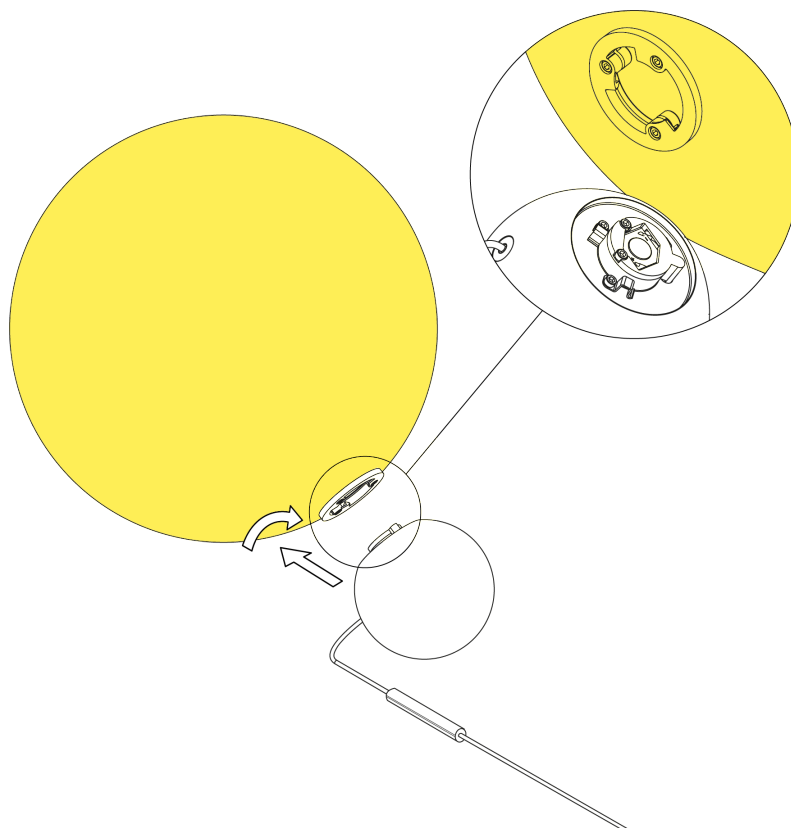


Fig.1

Position the body (A) on the diffuser (B) so that the body's 3 snap springs (C) are inserted into the slot (D) in the diffuser's ferrule and lock it by turning it slightly clockwise.

Remove the diffuser (B) from the body (A) by unfastening it by turning it counterclockwise.

WARNING! When installing and whenever acting on the appliance, ensure that the power supply has been switched off.
For the installation of the spare-part, it is necessary to consult a qualified electrician.

©2021 Flos - All rights reserved - www.flos.com
Flos reserves the right to introduce any changes to its own models, without prior notice.

COPYCAT F1952044

EN

RF3320100

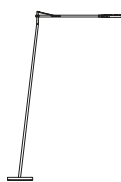
BLACK PLUG & KIT DRIVER




Copycat
p.05

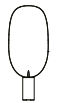

Goldman
p.03


Kelvin
Edge
p.03


Kelvin
Led F
p.03

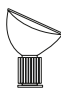

Kelvin
Led GM
p.03


Ok
p.38


Serena
p.10


Tab F
p.03


Tab T
p.03


Taccia
Small
Led
p.11


Ray T
p.20

WARNING! When installing and whenever acting on the appliance, ensure that the power supply has been switched off. For the installation of the spare-part, it is necessary to consult a qualified electrician.

COPYCAT F1952044

EN

RF3320100

BLACK PLUG & KIT DRIVER

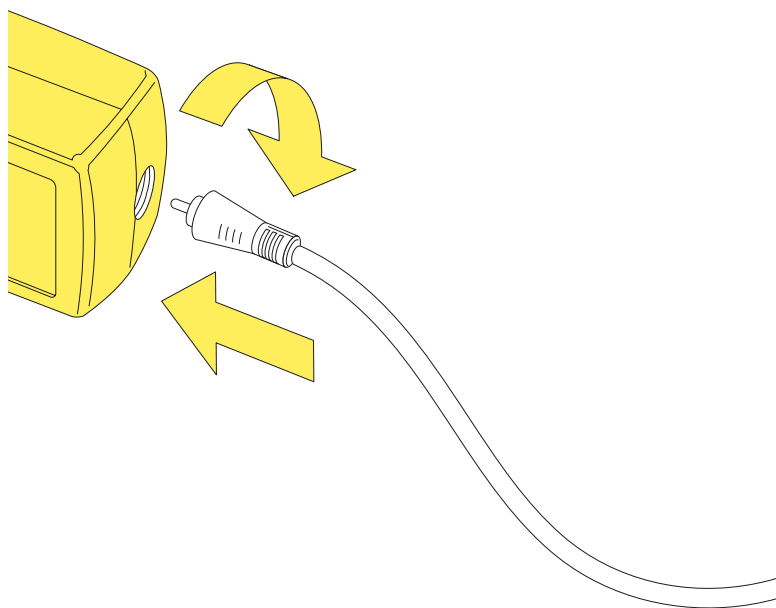


Fig.1

Insert the plug into the driver unit by using the guides snap it inside its apposite slot (use the correct type of plug for the area in which the device must be installed), connect the plug to the feeder unit locking it in by rotating it 90° clockwise.

WARNING! When installing and whenever acting on the appliance, ensure that the power supply has been switched off.
For the installation of the spare-part, it is necessary to consult a qualified electrician.

©2021 Flos - All rights reserved - www.flos.com
Flos reserves the right to introduce any changes to its own models, without prior notice.

COPYCAT F1952044

EN

RF6605100

JACK PLUG WITH COAXIAL CABLE AND DIMMER



Copycat
p.07



Serena
p.12



Taccia
Small
Led
p.08

WARNING! When installing and whenever acting on the appliance, ensure that the power supply has been switched off.
For the installation of the spare-part, it is necessary to consult a qualified electrician.

COPYCAT F1952044

EN

RF6605100

JACK PLUG WITH COAXIAL CABLE AND DIMMER



Fig.1

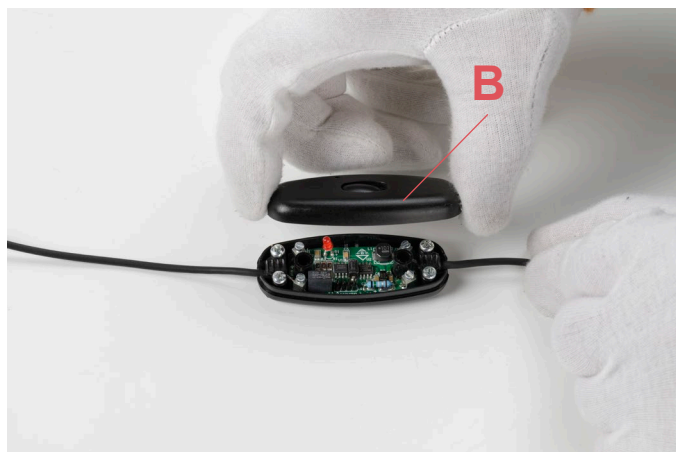


Fig.2

Unfasten the 2 screws (A) from underneath the dimmer and remove the dimmer cover (B).

WARNING! When installing and whenever acting on the appliance, ensure that the power supply has been switched off. For the installation of the spare-part, it is necessary to consult a qualified electrician.

COPYCAT F1952044

EN

RF6605100

JACK PLUG WITH COAXIAL CABLE AND DIMMER

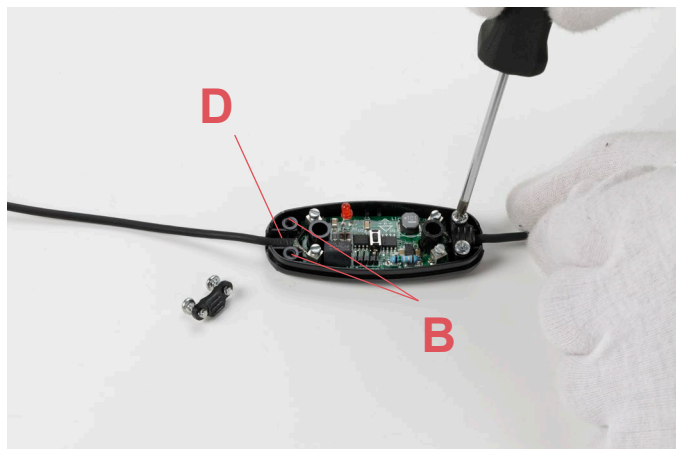


Fig.3

Unfasten the 2 screws (C) of the cable clamp (D) and disconnect the wires from the terminal box (F) through a tiny flat headed screw driver.

Assemble now the new spare-part:

Unfasten the 2 screws (A) from underneath the dimmer and remove the dimmer cover (B).

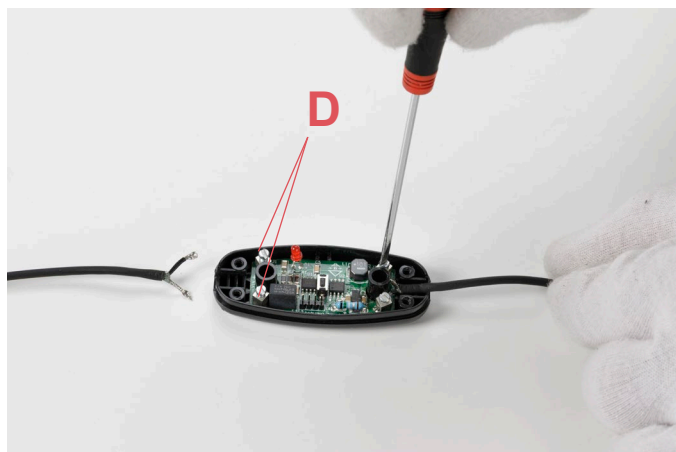


Fig.4

Connect the electrical wires to the terminal (F) respecting the polarities of the dimmer. Position the cable clamp (D) and fasten back the screws (C).

Close the dimmer by positioning the cover (B) and fastening the 2 screws (A)

WARNING! When installing and whenever acting on the appliance, ensure that the power supply has been switched off. For the installation of the spare-part, it is necessary to consult a qualified electrician.

COPYCAT F1952044

EN

RF1951100

KIT OF SNAP SPRINGS AND FIXING SCREWS



WARNING! When installing and whenever acting on the appliance, ensure that the power supply has been switched off.
For the installation of the spare-part, it is necessary to consult a qualified electrician.

COPYCAT F1952044

EN

RF1951100

KIT OF SNAP SPRINGS AND FIXING SCREWS

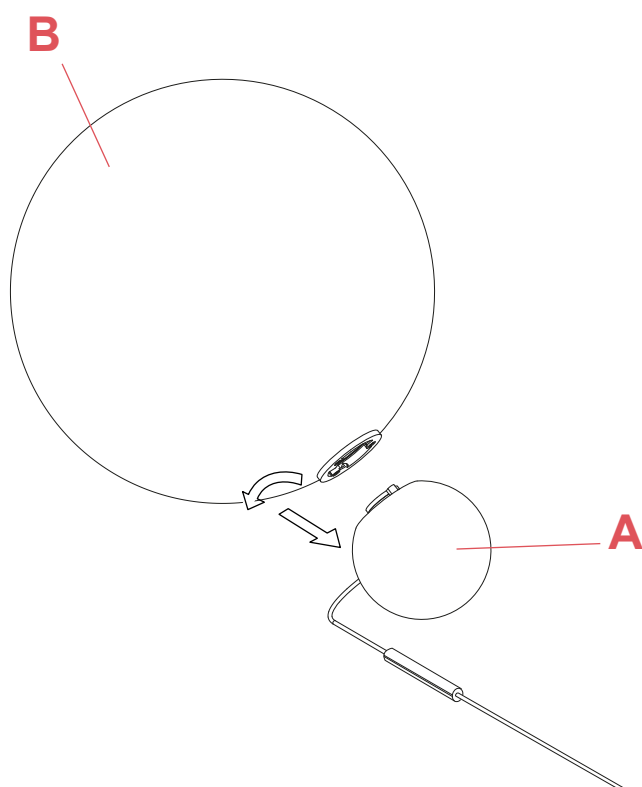


Fig.1

Remove the diffuser (B) from the body (A) by unfastening it by turning it counterclockwise.

WARNING! When installing and whenever acting on the appliance, ensure that the power supply has been switched off.
For the installation of the spare-part, it is necessary to consult a qualified electrician.

©2021 Flos - All rights reserved - www.flos.com
Flos reserves the right to introduce any changes to its own models, without prior notice.

COPYCAT F1952044

EN

RF1951100

KIT OF SNAP SPRINGS AND FIXING SCREWS

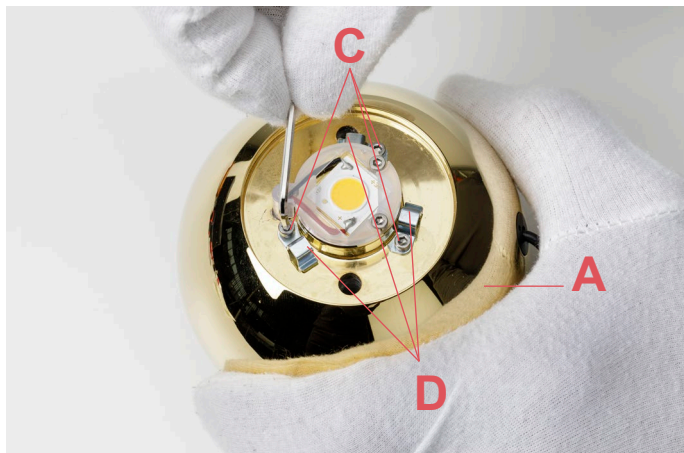


Fig.2

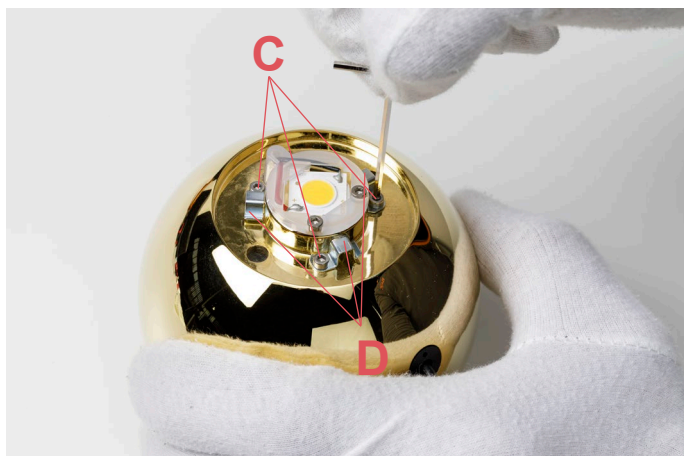


Fig.3

Unfasten the 3 screws (C) from the body (A), by utilizing an Allen key and then remove the damaged snap springs (D).

Assemble now the new spare-part:

Install the snap springs (D) on the body (A) and fasten back the screws (C).

WARNING! When installing and whenever acting on the appliance, ensure that the power supply has been switched off. For the installation of the spare-part, it is necessary to consult a qualified electrician.

COPYCAT F1952044

EN

RF1951100

KIT OF SNAP SPRINGS AND FIXING SCREWS

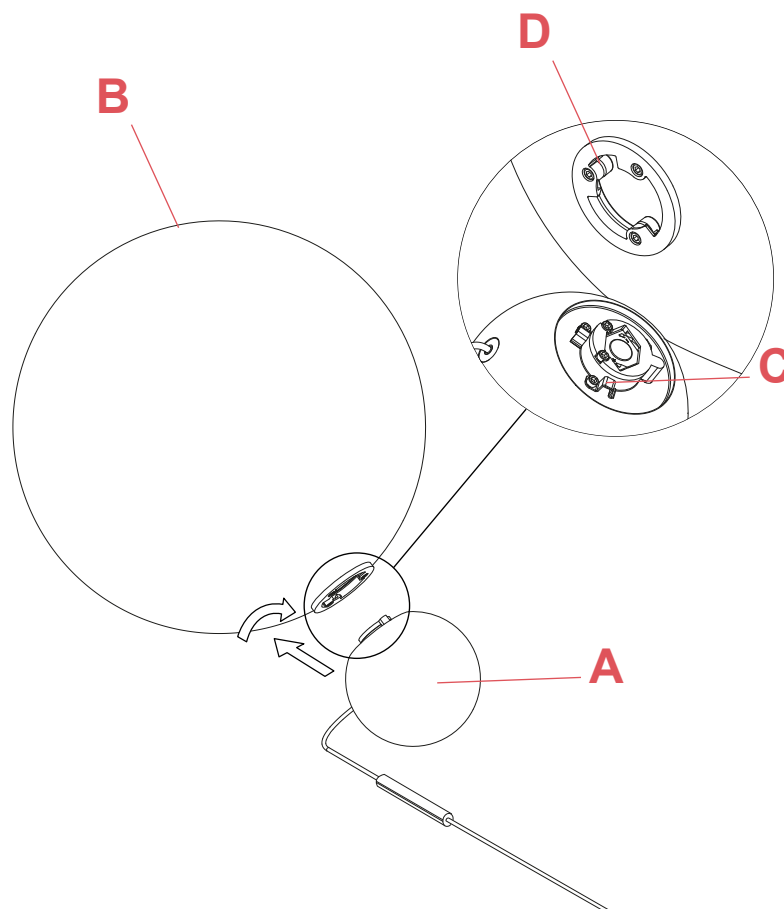


Fig.4

Remove the diffuser (B) from the body (A) by unfastening it by turning it counterclockwise.

WARNING! When installing and whenever acting on the appliance, ensure that the power supply has been switched off.
For the installation of the spare-part, it is necessary to consult a qualified electrician.

©2021 Flos - All rights reserved - www.flos.com
Flos reserves the right to introduce any changes to its own models, without prior notice.