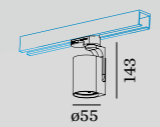
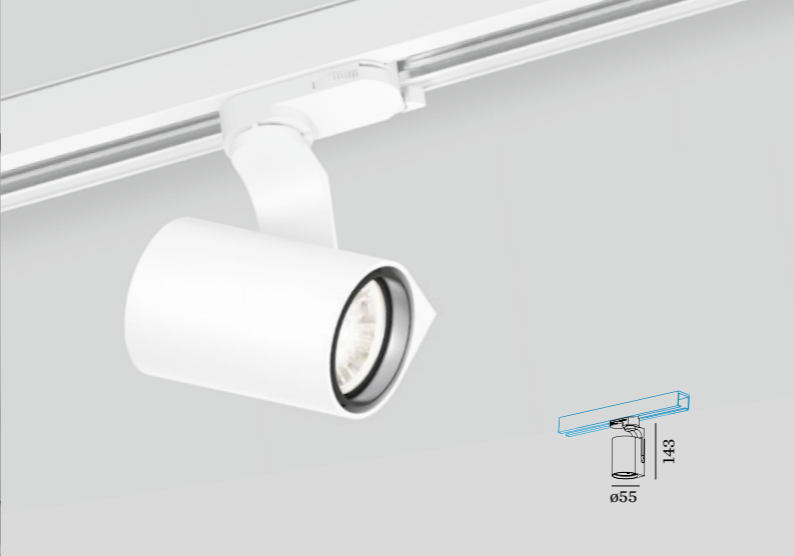




SQUBE on track

**CEILING SURFACE
3-PHASE TRACK**



1.0 PAR16

PAR16 max.12W | GU10
100-240VAC | 50-60Hz
aluminium powder coated
incl. 3-phase track adapter

0.32kg IP20 0.9m 36°

90° 355°

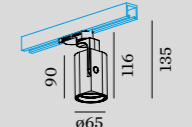
	CODE
White	144720W0
Black	144720B0

OPTIONAL

PAR16 LED GU10 7W
phase-cut dim

	CODE
2700K	901228W2
3000K	901228W4
1800-2850K	901229S9

more lamps and specs on page 593
more 3-phase track accessories on page 605



2.0 LED

LED 12W | 220-240VAC | 50-60Hz
COB 3-step | incl. PS | phase-cut dim
aluminium powder coated
incl. 3-phase track adapter

0.40kg IP20 0.3m 24°

90° 355°

	CODE
White	144364W_
Black	144364B_

Light Colour Selection

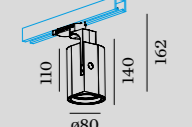
	LUMEN CRI	CODE
2700K	780 >80	2
3000K	810 >80	4
1800-3000K	850 >80	9

OPTIONAL

dimmer

	CODE
for switch	90019017
for din rail	90019018

more specs on page 591
more 3-phase track accessories on page 605



3.0 LED

LED 20W | 220-240VAC | 50-60Hz
COB 3-step | incl. PS | phase-cut dim
aluminium powder coated
incl. 3-phase track adapter

0.75kg IP20 0.3m 31°

90° 355°

	CODE
White	144564W_
Black	144564B_

Light Colour Selection

	LUMEN CRI	CODE
2700K	1250 >90	3
3000K	1360 >90	5

OPTIONAL

dimmer

	CODE
for switch	90019017
for din rail	90019018

more specs on page 591
more 3-phase track accessories on page 605