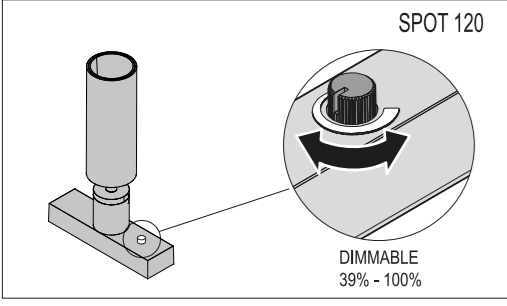
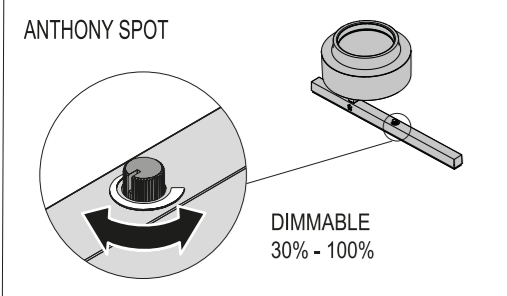


WARNING!
Calculate the total power of system output by applying a safety coefficient of +15% without exceeding the driver's full potential



NO DALI VERSION

- MAX 21 Spot or Minigloball or Findme Suspension Running Magnet each feed unit profile.
- MAX 14 spot 120 Running Magnet each feed unit profile.
- MAX 14 Multispot 4 Running Magnet each feed unit profile.
- Max 6 Anthony spot each feed unit profile.
- Max 6 String light each feed unit profile.
- Max 14 Light Shadow Running Magnet 4L each feed unit profile.



WARNING:
Weak lens in Flood and Wide Flood versions

DALI VERSION

- The DALI control will be 10% to 100%
- Warning! The DALI accessory may have any direction.
- Warning! Secure DALI connection . It does not have to operate the product properly without this check.
- Electrical Installation requires knowledge and should be carried out by accredited specialists.
- MAX. 64 products for the DALI controller.
- MAX 14 spot or Minigloball or findme suspension Running magnet each feed unit profile.
- Max 11 spot 120 Running magnet each feed unit profile.
- Max 14 multispot 4 each feed unit profile.
- Max 11 Light Shadow Running Magnet 4L each feed unit profile.

WARNING: For Light Shadow Running Magnet

- E** La luminaria debería colocarse de forma que no se espera una mirada prolongada a la luminaria a una distancia más cercana a X m
- GB** The luminaire should be positioned so that prolonged staring into the luminaire at a distance of X m, is not expected.
- I** L'apparecchio dovrà essere collocato in modo che non ci si aspetti uno sguardo prolungato verso l'apparecchio da una distanza di circa x m.
- D** Die Lampe ist so zu positionieren, dass ein direkter Blick vermieden wird. Dies geschieht durch eine Längspositionierung auf x Metern Distanz.
- F** Le luminaire doit être positionné de manière à ne pas attendre un regard prolongé vers le luminaire à une distance proche de x mètres.
- P** A luminária deverá ser posicionada de tal forma que uma pessoa a x metros de distancia não mantenha o olhar prolongado à mesma..
- JP** 本照明器具は、X mより近い距離から内部を長時間凝視することがない場所に設置してください。
- CN** 请勿将灯具放置于接近于离视线 X 公尺的距离。
- RU** Светильник должен располагаться таким образом, чтобы длительное зрительное наблюдение на расстоянии x м
- AR** متر لتجنب انظر الى الإضاءة لمدة طويلة، يجب وضع الإضاءة على مسافة أقرب من
- KZ** Ұзақ қарау кутіліместей а x м-ға ең жақын дейінгі қашықтықтағы жарық түсіріп қаруына оралыстырған жөн

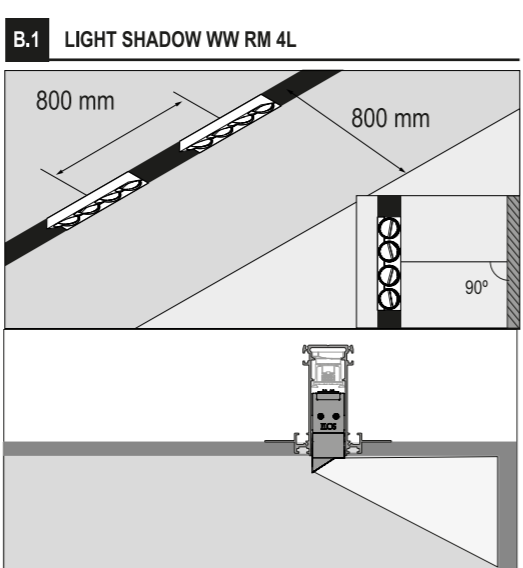
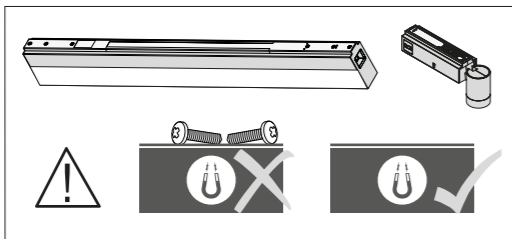
OPTICS	T°	X
Spot	3000 K	X = 175 cm
Medium	3000 K	X = 175 cm
Spot	2700 K	X = 50 cm

WARNING Only use with the electrical supply track system:
"The Running Magnet System"

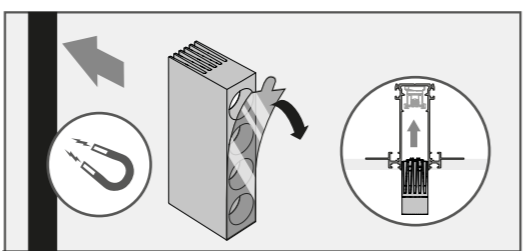
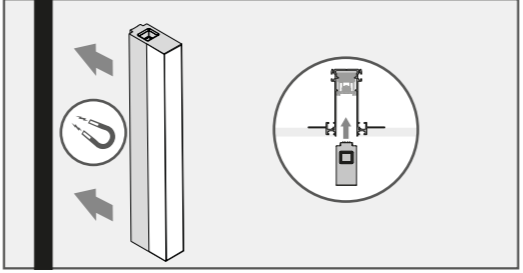
B LUMINAIRE INSTALLATION

INSTALACIÓN DE LA LUMINARIA / INSTALLAZIONE DELLA LAMPADA / INSTALLATION DER BELEUCHTUNG / INSTALLATION DU LUMINAIRE / INSTALAÇÃO DO APARELHO DE ILUMINAÇÃO / 照明器具の設置・据付け / 灯具的安装 / МОНТАЖ ОСВЕТИТЕЛЬНОГО ПРИБОРА / ШАМДЛАЛДЫ ОРНАТУУ / تركيب وحدة الإضاءة

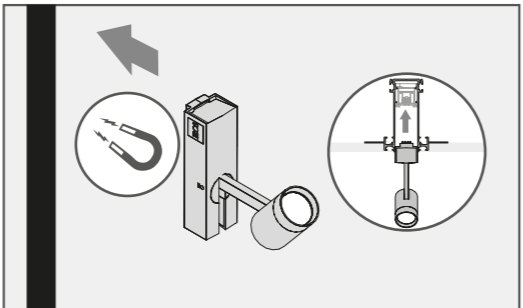
UL LISTED
The Running Magnet to be assembled with FLOS electrical track and FLOS mechanical housing



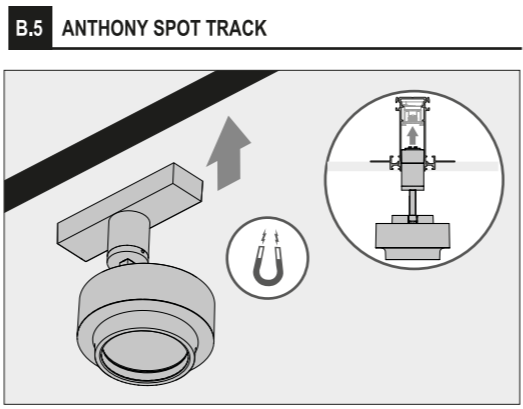
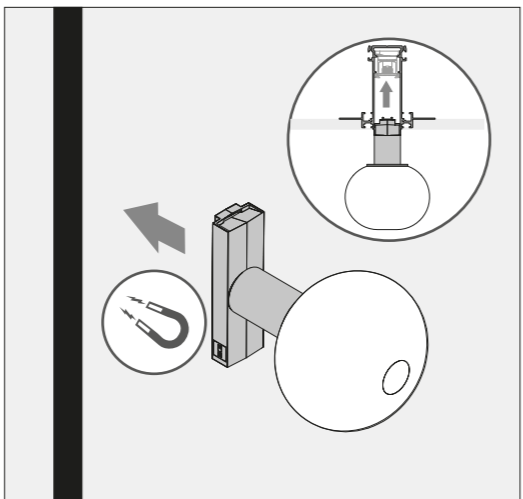
B.2 LIGHT STRIPES AND LED SPOT



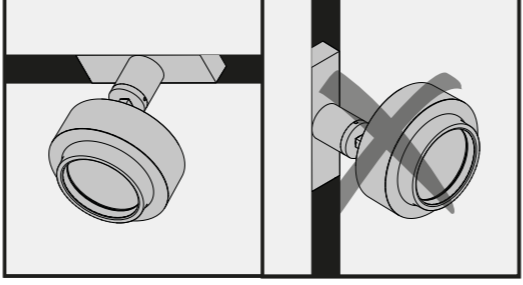
REMOVE PLASTIC FILM



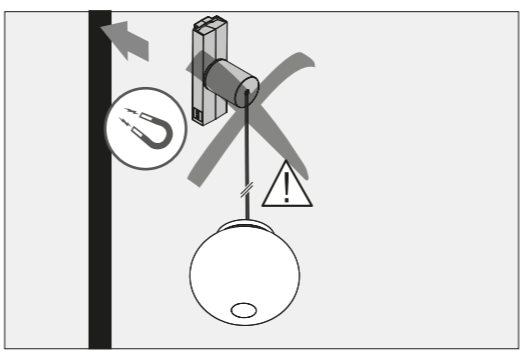
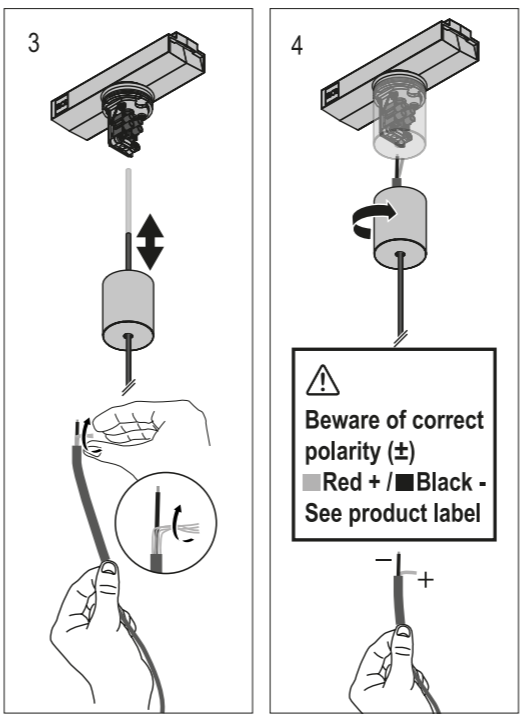
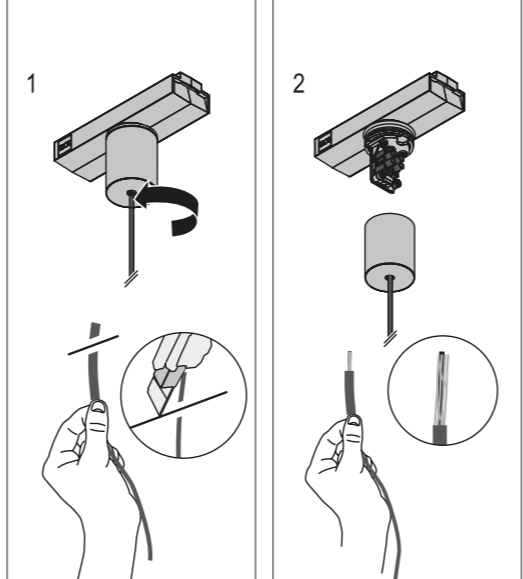
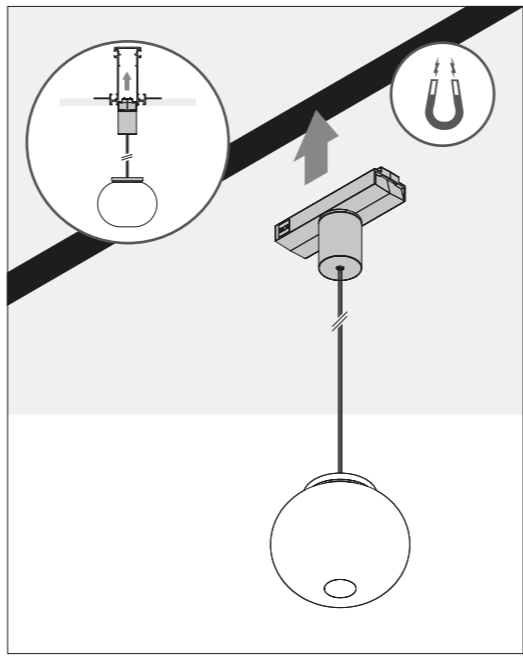
B.3 MINI GLO-BAL



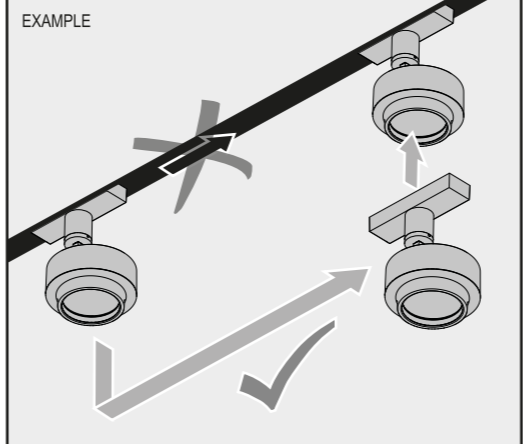
WARNING:
Only allowed ceiling installation



B.4 MINI GLO-BAL, FIND ME SUSPENSION

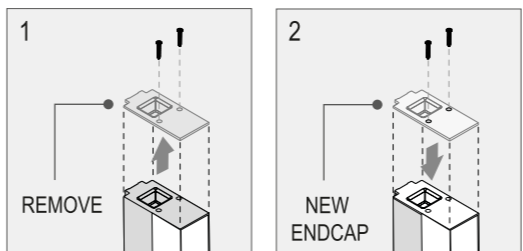


WARNING FOR ALL MODULES:
Do not drag. Remove and put in the new position.

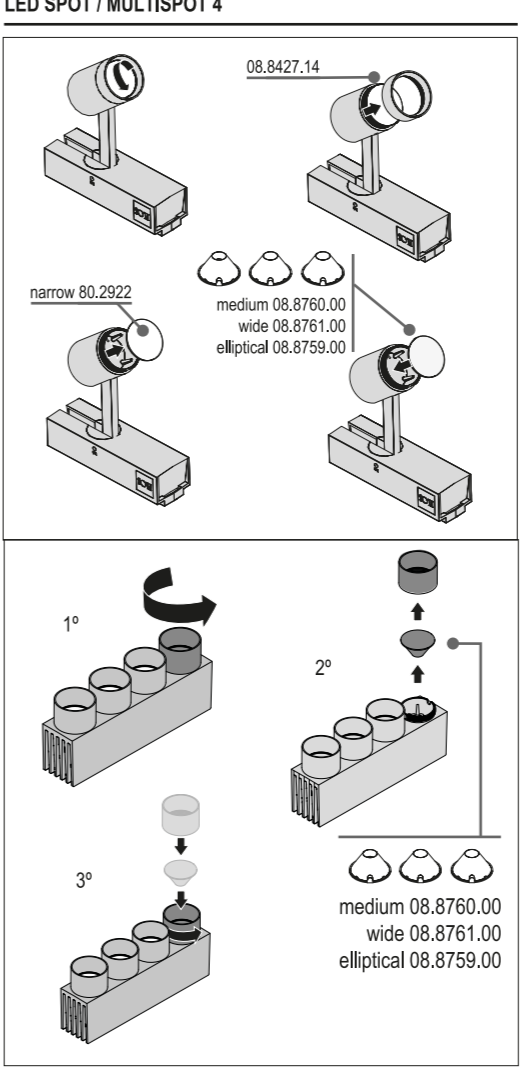


C ACCESSORIES
ACCESORIOS / ACCESSORI / ZUBEHÖR / ACCESSOIRES / ACCESSÓRIOS / アクセサリー / 配件 / АКЦЕССУАРЫ / كعقبات و ارفاق / 配件

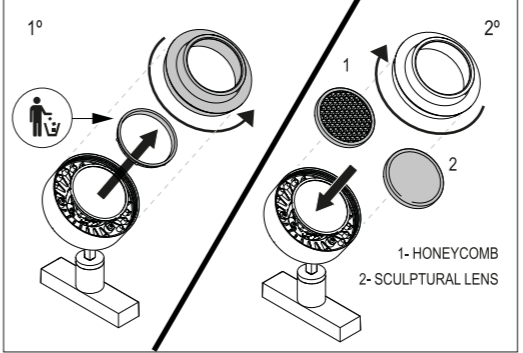
C.1 ENDCAP EXCHANGE



C.2 LENS EXCHANGE



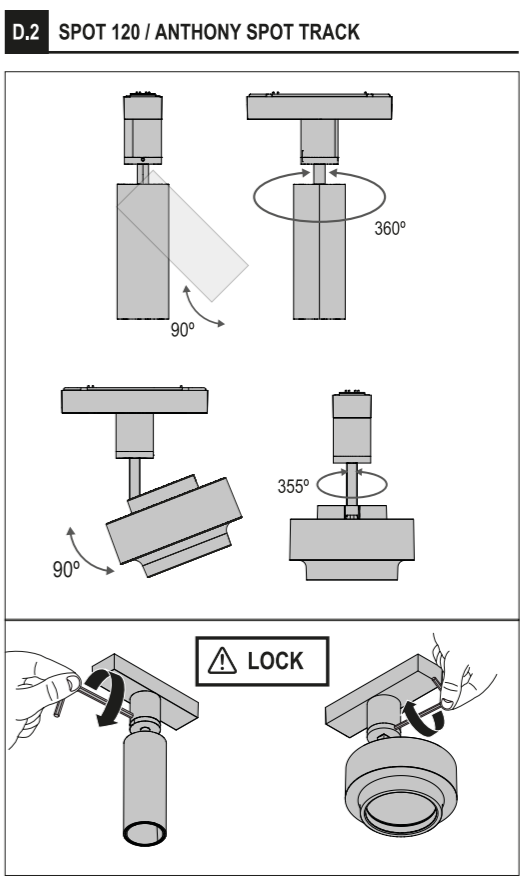
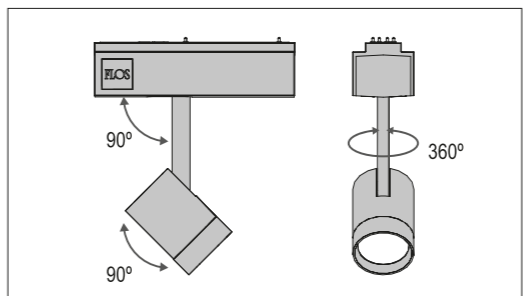
ANTHONY SPOT



D TILT AND LOCKING ADJUSTMENT

REGULACIÓN DE LA INCLINACIÓN Y BLOQUEOS / REGOLAZIONE DELL'INCLINAZIONE E BLOCCHI / NEIGUNGSREGLER UND SPERREN / RÉGLAGE DE L'INCLINAISON ET VERROUILLAGES / REGULAÇÃO DA INCLINAÇÃO E BLOQUEIOS / 角度調節と固定 / 调节傾斜度和锁定装置 / РЕГУЛИРОВКА НАКЛОНА С ФИКСАЦИЕЙ / ЕКВЕЙТУДИ ЖИНЕ БИРСАУЛАДЫ ПЕТТЕУ / ضبط الإضاءة والفتح

D.1 LED SPOT



DIMENSION CONVERSION TABLE

mm	inch
2	0,08
22	0,87
33	1,30
34	1,34
40	1,57
46	1,81
50	1,97
72	2,83
85	3,35
92	3,62
110	4,33
111	4,37
120	4,72
130	5,12
140	5,51
160	6,30
165	6,50
170	6,69
220	8,66
300	11,81
500	19,69
600	23,62
800	31,50
900	35,43
1200	47,24
1500	59,06
1750	68,90
3000	118,11