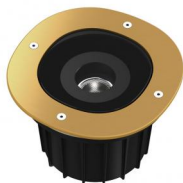
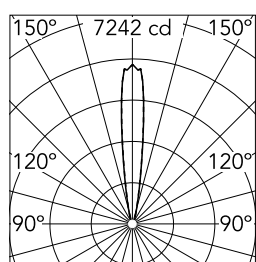
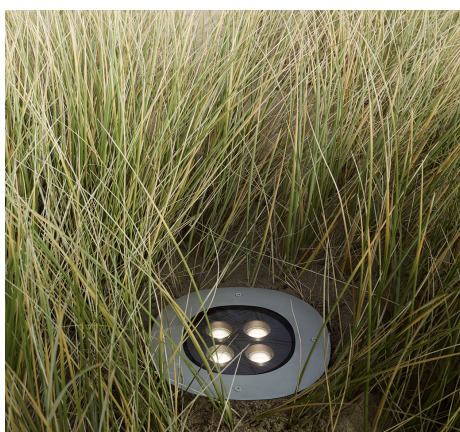


A-Round 150 Satin Gold



Ground-recessed luminaire for outdoor use, walkable and trafficable, available in three sizes, with adjustable optics in various configurations. External body made of stainless steel AISI 316L treated with the PVD process (Physical Vapour Deposition).

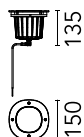
Thanks to this innovative treatment, the surfaces of A-Round are coated with a thin film of metals, such as zirconium and titanium which, combining with the steel at the molecular level, increases the...



Luminous flux luminaire
576 lm

Beam Angle: 14°

h(m)	E(lx)	D(m)
1	7242	0.25
2	1810	0.50
3	805	0.76
4	453	1.01
5	290	1.26



Mountings	Ground recessed
Lamp category	LED
Power (W)	8
Colour temperature	3000K
CRI	80
Lumen	576 lm
Voltage (V)	230
Environment	Outdoor

LED type	Power LED
Aiming	Adjustable
Light Distribution	Symmetric
Beam Angle	14

Transformer Availability	Included
Transformer Mounting	remote included
Transformer Type	Not dimmable
Emergency	Without
Insulation Class	II
Lamp Holder	LED
Dimmable	No

Colors	F4573044 - Satin Gold
---------------	-----------------------

Certificates

Note



We recommend using a connection system with a degree of protection greater than or equal to the degree of protection of the luminaire. During the installation and the maintenance of the fixtures it is important to be careful and avoid damages on the paint coating. Damages on the coating exposed to outdoor conditions or water, could cause corrosion. Chemical substances affect the anticorrosion covering protection. For LED fixtures, there is evidence that most of the damages are connected to electrical effects related to the insulations, which cause destructive electrical discharges. These effects are frequently caused by:

- over voltage coming from the mains' network where fixture is connected.
- electrostatic discharge (ESD) coming from the environment.

The use of a protective device against the overvoltage on the electrical installation is warmly suggest this helps to reduce the intensity of some of these phenomenon and prevent irreversible damages. The selection of the type of device to be used must be adjust on the electrical plant.

A-Round 150 Satin Gold



Box for installation
F4597000



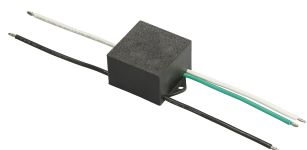
2 way terminal block 4 poles
IP68 H2O stop. (ø5,5÷12mm
cable)
F990C00A000



3/4 way terminal block 4 poles
IP68 H2O stop. (ø5,5÷12mm
cable)
F990C010000



Flood lens 1 unit Kit
F4558000



S.P.D. (SURGE PROTECTION
DEVICE)
F990E00A000



Honeycomb 1 unit Kit
F4555000