

Correcte verwijdering van dit product (Elektrische & elektronische afvalapparatuur)
 Comment éliminer ce produit (Déchets d'équipements électriques et électroniques)
 Korrekte Entsorgung dieses Produkts (Elektronikmüll)
 Correct disposal of this product (Waste electrical & electronic equipment)
 Elimination correcta de este producto (Material eléctrico y electrónico de descarte)
 Corretto smaltimento del prodotto (Rifiuti elettrici ed elettronici)

Enkel geschikt voor toestellen op zeer lage spanning (minder dan 50V AC)
 Convient uniquement pour les produits à très basse tension (moins de 50V AC)
 Geeignet für Güter mit sehr niedriger Spannung (unter 50V AC)
 Only suited for goods at very low voltage (below 50V AC)
 Se recomienda únicamente para aquellos productos de tensión muy baja (menos de 50V AC)
 Vale unicamente per i prodotti a tensione molto bassa (inferiore a 50V AC)

This product contains a light source of energy efficiency class G
 本产品包含能效等级为 G 的光源
 Этот артикул содержит источник света с энергоэффективностью класса G
 Dit product bevat een verlichtingsbron van energie-efficiëntieklasse G
 Ce produit contient une source d'éclairage de classe d'efficacité énergétique G
 Dieses Produkt enthält eine Lichtquelle der Energieeffizienzklasse G
 Este producto contiene una fuente de iluminación de clase de eficiencia energética G
 Questo prodotto contiene una fonte di illuminazione in classe di efficienza energetica G

Bevestiging wand inbouw
 Montage mur encastré
 Montage wand eingebaute
 Fixation wall recessed
 Montaje pared empotrada
 Montaggio parete incasso

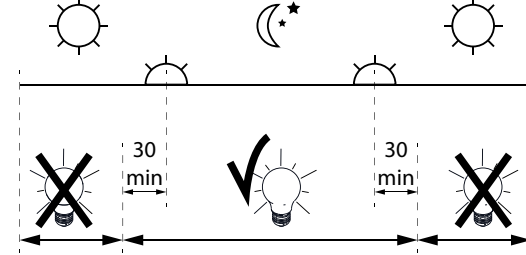
Replaceable (LED only) light source by a professional
 La source d'éclairage (uniquement LED) ne peut être remplacée que par un professionnel
 可由专业人士更换 (仅限于LED) 光源
 Сменный (только светодиодный) источник света только квалифицированным персоналом

IP67 Stofdicht - Beschermtd tegen effecten van tijdelijke indompeling
 Étanche aux poussières - Protège contre les effets de l'immersion temporaire
 Staubdicht - Geschützt gegen vorübergehend Eintaucheffekte
 Dust-tight - Protected against the effects of temporary immersion
 Hermético al polvo - Protegido contra los efectos de la inmersión temporal
 A tenuta di polvere - Protetto contro gli effetti dell'immersione temporanea

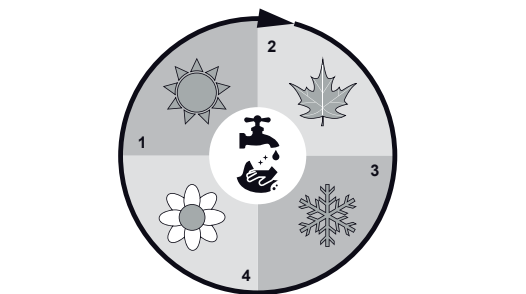
Verlichtingsbron (enkel LED) kan enkel vervangen worden door een professional
 La source d'éclairage (uniquement LED) ne peut être remplacée que par un professionnel
 Die Lichtquelle (nur LED) kann nur von einem Fachmann ausgetauscht werden
 La fuente de iluminación (solo LED) y equipo de control solo puede ser reemplazada por un profesional
 La fonte di illuminazione (solo LED) può essere sostituita solo da un professionista

Geschikt voor binnen- en buitengebruik, rekening houdend met opgegeven IP-waarden
 Convient à usage intérieur et extérieur, prenant en compte l'IP indiquée
 Eignet sich für innen- und aussenbereich, unter Berücksichtigung des angezeigten IP
 Suitable for indoor and outdoor use, taking the indicated IP rating into consideration
 Apto para uso interior y exterior en conformidad con el nivel IP indicado
 Per utilizzo sia in interni che da esterni, da installare tenendo conto del suo grado di protezione (IP)

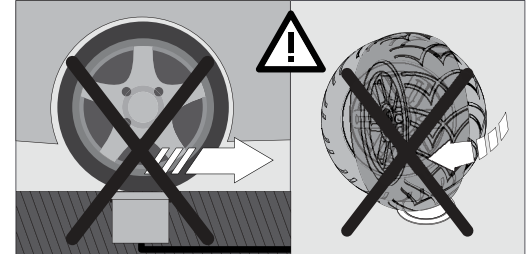
Gelijkstroomtoevoer
 Alimentation DC
 GS-Zufuhr
 DC supply
 Alimentación de CC
 Alimentazione CC



Dagelijkse ontstekingsperiode toegestaan
 Durée quotidienne d'allumage admissible
 Erlaubte tägliche einschaltdauer
 Allowed daily operation period
 Periodo giornaliero di accensione ammesso
 Periodo diario de encendido permitido



CAUTION! CLEAN AT LEAST QUARTERLY WITH WATER AND NON-ABRASIVE CLOTH



Pressure load: 5000kg (~50kN)
 Rated maximum surface temperature: 50°C
 负载: 5000kg (~50kN)
 (额定) 表面最高温度: 50°C
 Допустимая статическая нагрузка до 50kN (до 5000кг)
 Номинальная максимальная температура поверхности: 50°C
 حمل ضغط: 5000 كيلو نيوتن تقريبا
 درجة الحرارة القصوى لسطح المنتج: 50 درجة مئوية
 Drukbelasting: 5000kg (~50kN)
 Maximale nominale oppervlaktetemperatuur: 50°C
 Pression: 5000kg (~50kN)
 Nominale température de surface maximale: 50°C
 Druckbelastung: 5000kg (~50kN)
 Bewertete maximale Oberflächentemperatur: 50°C
 Carico di pressione: 5000kg (~50kN)
 Temperatura massima nominale della superficie: 50°C
 Presión de carga: 5000kg (~50kN)
 Temperatura máxima de la superficie: 50°C

Logic F

Manual/

Ø103
Ø89
11
36

Ø 93 x 40
LOGIC F2
213 47 122
◇ = A
INCL.2 x POWERLED WHITE 0,5W / 3000K
EXCLLED POWER SUPPLY 24V-DC
max.600kg

Ⓜ CE 0,3 IP67

OPTIONS
GENIE BOX 90R
CBOX
LED POWER SUPPLY 24V-DC

Ø103
Ø89
11
36

Ø 93 x 40
LOGIC F1
213 47 112
◇ = A
INCL.1 x POWERLED WHITE 0,5W / 3000K
EXCLLED POWER SUPPLY 24V-DC
max.600kg

Ⓜ CE 0,3 IP67

OPTIONS
GENIE BOX 90R
CBOX
LED POWER SUPPLY 24V-DC



DELTA LIGHT

Ø93 x 40
T=60°C Ø93

40

Options		
INSTALLATION		
GENIE BOX 90 R 213 19 09	220 x 155 x 146	224 x 159 x 150
CBOX 216 12 00	140 x 140 x 173	142 x 142 x 300
CONTROL GEAR		
LED POWER SUPPLY 24V-DC / 20W 300 89 24 20	146 x 55 x 19	

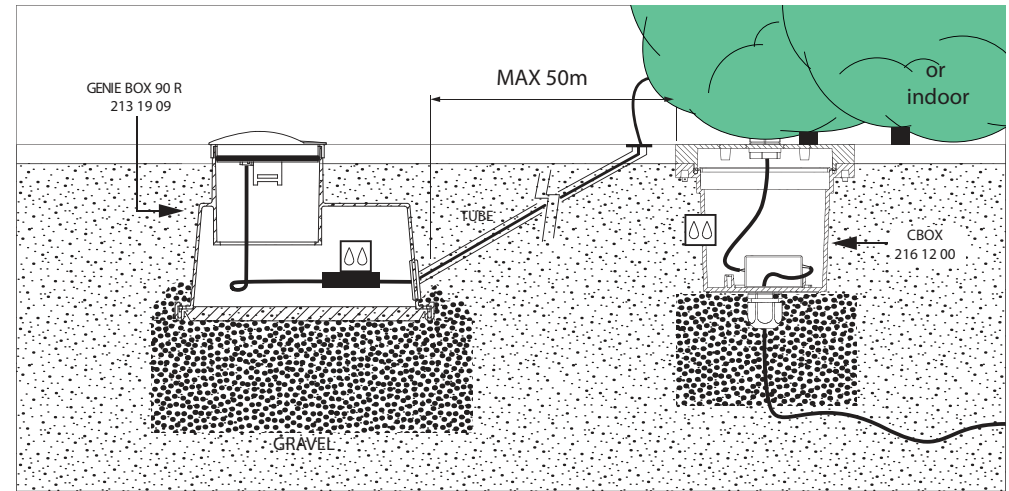
Accessory Set

RED
2x

OR

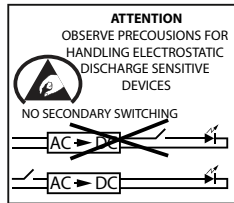
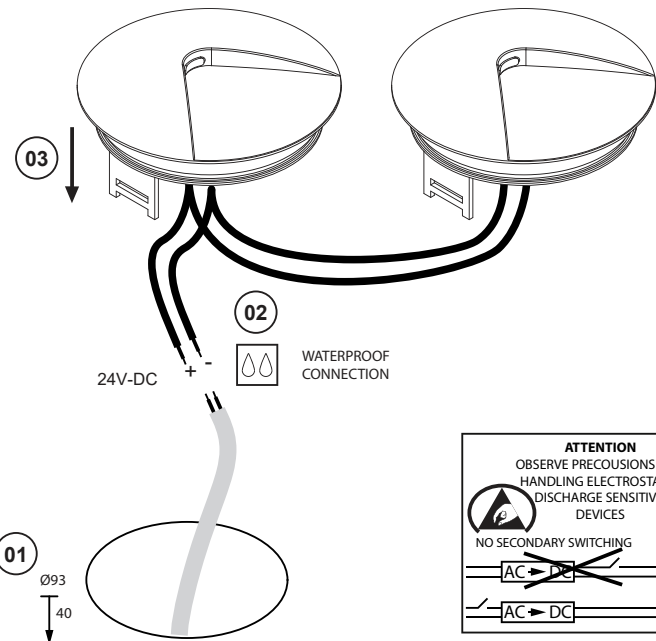
A B

SAVE!

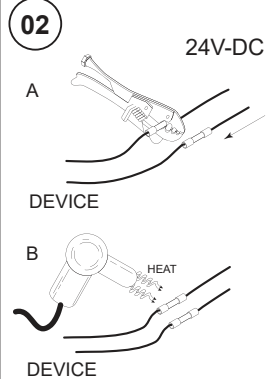


WARNING

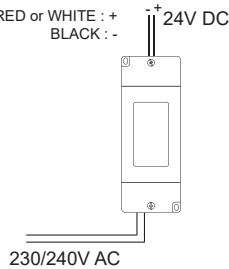
ANY CLAIM TO A WARRANTY SHALL BECOME NULL AND VOID IF THE DEVICE IS NOT INSTALLED WITH THE SUITABLE BOX (OPTIONAL) PROVIDED BY DELTALIGHT N.V.



WATERPROOF CONNECT

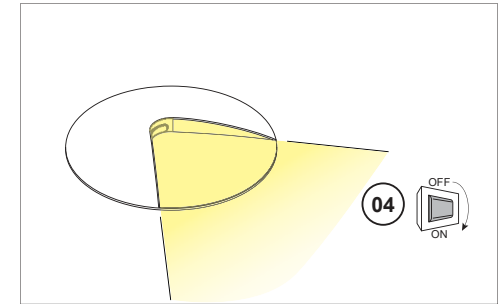
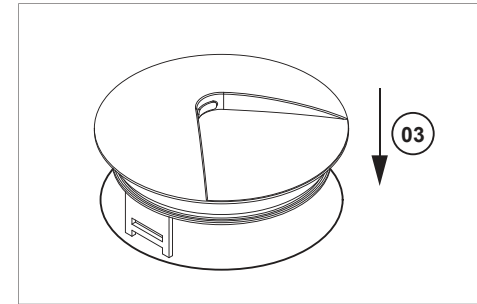


RED or WHITE : +
BLACK : -



LED POWER SUPPLY
DELIVERED SEPARATELY
Ref.: 300 89 24 20

MAX. 40 LED MODULES F1 / POWER SUPPLY
MAX. 20 LED MODULES F2 / POWER SUPPLY



- Use only power supplies that are certified according to the applicable IEC or UL safety standards.
- Use only SELV power supplies.
- Check the ratings of the power supply with those of the luminaire. The maximum current rating must be taken into account. The indicated typical voltage must not be used to select a constant voltage power supply but is intended to select a constant current power supply that is able to cover that typical voltage.
- Take appropriate ESD measures. Avoid touching bare conductors.
- Leds or led luminaires that require current controlled power supply must never be connected in parallel.
- Leds can be damaged by the contact with certain chemicals or chemical gasses. Therefore led domes or led engines should never be cleaned with chemical substances.
- The following substances have proven to have a negative influence on the performance and must not be used in the direct environment of the led luminaire:
 - Methyl acetate or ethyl acetate (i.e., nail polish remover)
 - Cyanoacrylates (i.e., "Superglue")
 - Glycol ethers (including Radio Shack® Precision Electronics Cleaner - dipropylene glycol monomethyl ether)
 - Formaldehyde or butadiene (including Ashland PLIOBOND® adhesive)
 - Dymax 984-LVUF conformal coating
 - Loctite Sumo Glue
 - Gorilla Glue
 - Bleach, Bleach-containing cleaners, sprays
 - Loctite 384 adhesive
 - Loctite 7387 activator
 - Loctite 242 threadlocker
- Remove insulation and/or provide sufficient ventilation so that the indicated max. Tc is not surpassed.
- Leds are susceptible to switching transients. therefore switching must be done in the primary circuit of the power supply.
- DELTA LIGHT recommends to use the power supplies that are indicated in the Lighting Bible.
- Respect polarity.
- Don't test led luminaires one by one on a power supply that is switched on.