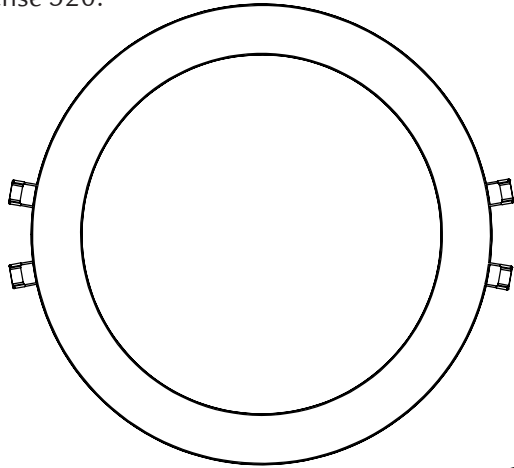


Sense 320

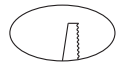


IP40*

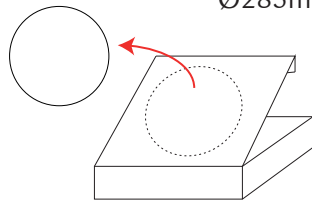
Sense 320:



Ø:317mm x H:25mm



Ø285mm

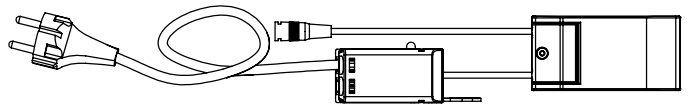


Driver for Sense 320:

230V, 50/60Hz

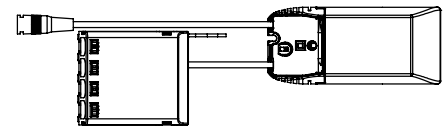


Phase cut dim: OT FIT 18W PC



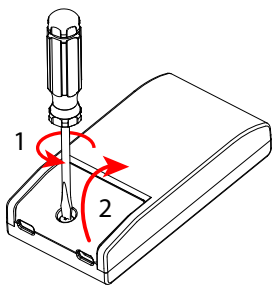
L:102mm x W:51mm x H:22mm

DALI: OTi DALI 15



L:119mm x W:53mm x H:30mm

OT FIT 18W PC



300mA



350mA



400mA



450mA



CCT	mA	V	~lm
2700K	450	36	1650
3000K	450	36	1700
4000K	450	36	1750

mA	W	W %	~lm @3000K
450	16	100 %	1700
400	14	89 %	1550
350	12	78 %	1400
300	11	67 %	1200

CORPORATE OFFICE:

SG Armaturen AS
Skytterheia 25
4790 Lillesand
NORGE

Tlf:+47 37 50 03 00
firmapost@sg-as.no
www.sg-as.no

BRANCH OFFICE:

SG Lighting SA/NV
Blokhuysstraat 47
2800 Mechelen Noord I
BELGIQUE/BELGIË

Tlf:+32(0) 15 20 72 71
info.benelux@sglighting.net
www.sglighting.net

BRANCH OFFICE:

SG Armaturen A/S
Egebakken 19
7400 Herning
DANMARK

Tlf:+45 70 70 72 13
info@sg-as.dk
www.sg-as.dk

BRANCH OFFICE:

SG Lighting SA/NV
73 rue de Saint Mandrier
83140 Six Fours Les Plages
FRANCE

Tlf:+33(0) 4 94 93 00 00
info.france@sglighting.fr
www.sglighting.net

BRANCH OFFICE:

SG Leuchten GmbH
Postfach 67 04 21
22344 Hamburg
GERMANY

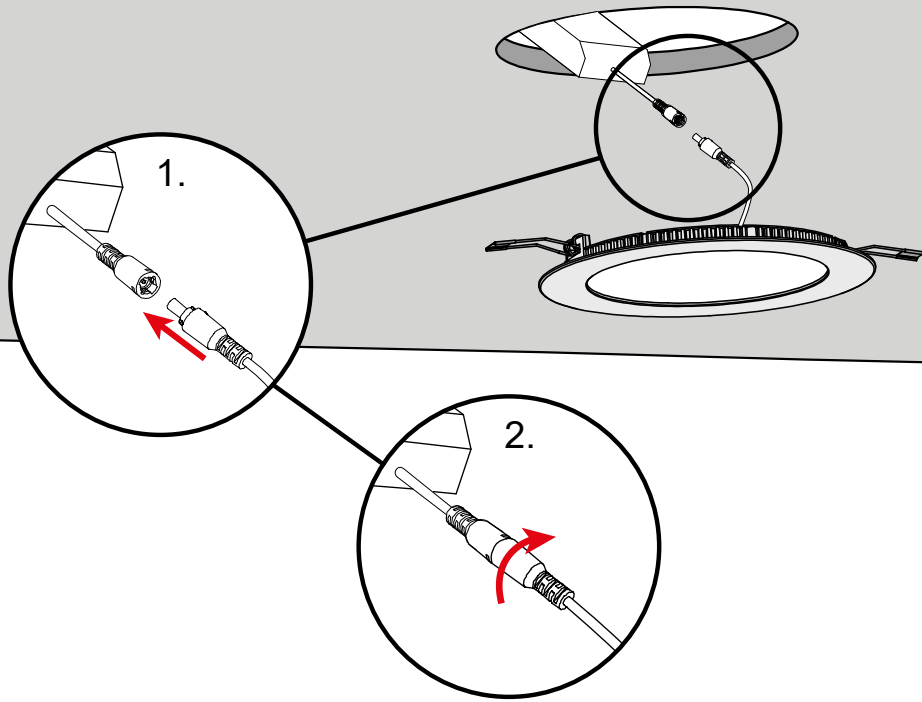
Tlf:+49 40 23 99 44 59
info@sg-leuchten.de
www.sg-leuchten.de

BRANCH OFFICE:

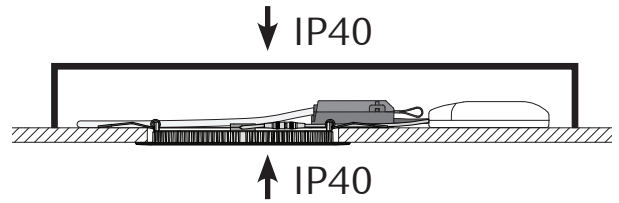
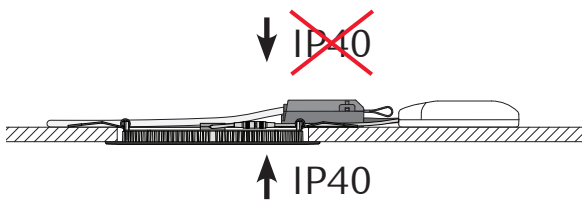
SG Armaturen AB
August Barksg. 30B
421 32 Västra Frölunda
SVERIGE

Tlf:+46 31 81 71 10
info@sg-ab.se
www.sg-ab.se

Rev: 18.10.2017



*



NO: Kan kun installeres av en registrert installasjonsvirksomhet
 EN: Only to be installed by an authorized electrician
 FR: Doit être installé par un électricien autorisé
 NL: Mag alleen geïnstalleerd worden door een bevoegde elektricien
 DE: Dieses Produkt darf nur durch autorisiertes Personal (z. B. Elektro-Installateur) angeschlossen und in Betrieb genommen werden

