

# BREAK

Design by Xucla & Alemany.

## Reference

**4101.**

## Application

Outdoor lamps

## Installation type

Surface

## Description

Outdoor bollard light designed by Xucla & Alemany. It gives a pleasant, subtle light through the methacrylate diffuser, and can withstand tough outdoor conditions. Available in khaki lacquer, oxide lacquer and concrete.

## Diffuser

Polycarbonate diffuser

## Materials

Box: Polyurethane

Base: Polyurethane

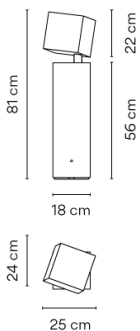
## Finish

 **4101-07** Khaki (RAL 7006)

 **4101-54** Oxide lacquer (RAL 8014)

 **4101-80** Concrete (Natural finish)

## Sketch



## Electrical characteristics

1 x LED 6,2W 350mA

Total 6.2 W



# VIBIA



**Light source:** 2700K CRI >80 580 lm 93.54 lm/W

**Fixture:** 218 lm 35.16 lm/W

**Driver included:** CC - Constant Current 350 mA 100-240V 50/60Hz

**Electronic dimming** NO DIM

## Physical characteristics

1 Box / 0.88 x 0.35 x 0.34 m. / Vol. 0.1055 m<sup>3</sup> /

Gross weight 12.0 kg. / Net weight 10.8 kg.

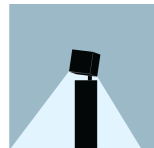
## Installation and assembly

Please, see the installation manual

## Light distribution

### Ground lighting

Reduced-height outdoor lamp to shade light on the ground.



## Photometric data

Efficiency : 46.23%

Coordinate system : CG

Total flux : 1961.10

Maximum value : 320.25

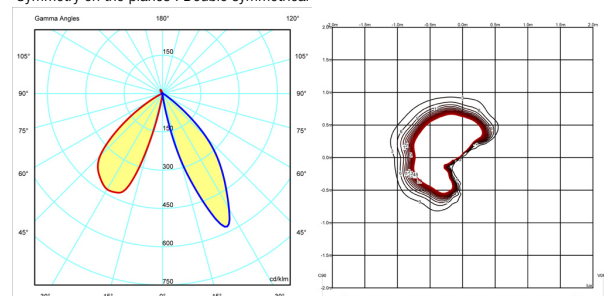
Light position : C=0.00 G=0.00

Symmetry on the planes : Double symmetrical

Isolux : Floor

Light position :

X=0.00m Y=0.00m Z=2.50m



## Certificates



