

**BEGA****24 370**

Wall luminaire

IP 64

Project · Reference number

Date

**Product data sheet****Application**

LED wall luminaire with single sided light output.  
Fully glare free light for lighting wall surfaces.  
For interior or exterior lighting design.

**Product description**

Luminaire made of aluminium alloy,  
aluminium and stainless steel  
Clear safety glass  
Silicone gasket  
2 mounting holes  $\varnothing$  4.3 mm  
Distance apart 84 mm  
2 cable entries for through-wiring of mains  
supply cable  $\varnothing$  7-10.5 mm  
Connection terminal 2.5<sup>2</sup>  
Earth conductor connection  
LED power supply unit  
220-240 V  $\sim$  0/50-60 Hz  
DC 176-280 V  
Safety class I  
Protection class IP 64  
Dust-tight and protection against splash water  
Impact strength IK07  
Protection against mechanical  
impacts < 2 joule  
**CE** – Conformity mark  
Weight: 1.3 kg

**Inrush current**

Inrush current: 20 A / 80  $\mu$ s  
Maximum number of luminaires of this  
type per miniature circuit breaker:  
B 10A: 35 luminaires  
B 16A: 56 luminaires  
C 10A: 58 luminaires  
C 16A: 94 luminaires

**Lamp**

Module connected wattage	8.2 W
Luminaire connected wattage	10 W
Rated temperature	$t_a = 25$ °C
Ambient temperature	$t_{a,max} = 45$ °C

On request we can offer you modifications for  
environments with higher temperatures as a  
customized product.

**24 370 K3**

Module designation	LED-0650/830
Colour temperature	3000 K
Colour rendering index	CRI > 80
Module luminous flux	1130 lm
Luminaire luminous flux	419 lm
Luminaire luminous efficiency	41,9 lm/W

**Service life · Ambient temperature**

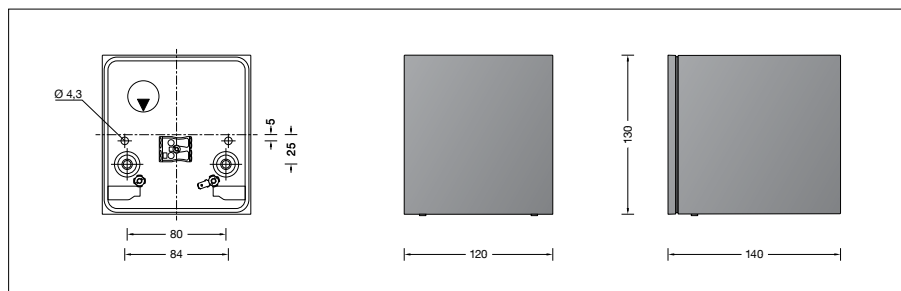
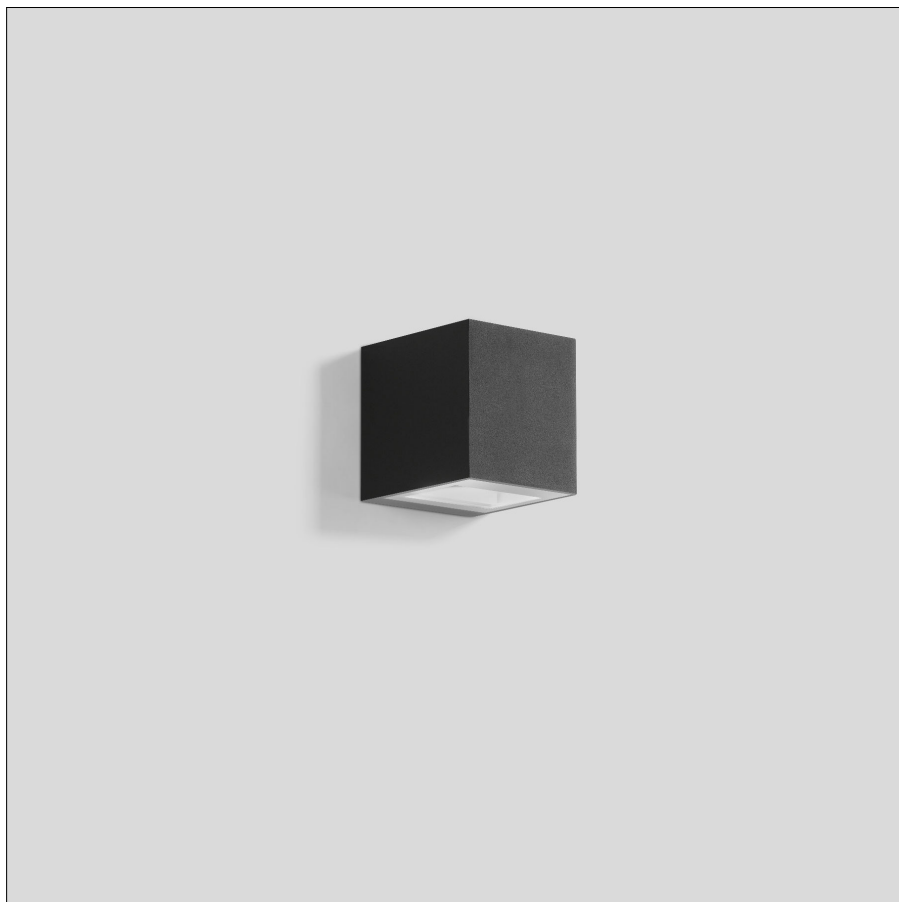
Rated temperature $t_a = 25$ °C	
LED psu:	> 50,000 h
LED module:	> 200,000 h (L 80 B 50) 100,000 h (L 90 B 50)
Ambient temperature $t_{a,max} = 45$ °C (100 %)	
LED psu:	50,000 h
LED module:	124,000 h (L 80 B 50)

**Light technique**

Luminaire data for the light planning program  
DIALux for outdoor lighting, street lighting and  
indoor lighting as well as luminaire data in  
EULUMDAT- and IES-format you will find on the  
BEGA web page [www.bega.com](http://www.bega.com).

**Article No. 24 370**

Colour graphite or silver  
graphite – article number  
silver – article number + **A**

**Light distribution**