

BOXY XL R C

DEEL  
PARTIE  
TEIL  
PART  
PARTE  
PARTE **A**

Diagram showing the unboxing of the BOXY XL R C luminaire. The luminaire has a diameter of  $\varnothing 131$  and a height of 137. The unboxing sequence is shown with arrows: from the box to the luminaire, then to the parts list. The parts list includes:

- 1 x DIN 911/1,5
- 1 x DIN 911/2
- 2 x [Small rectangular component]

Additional icons include: a warning symbol for sharp edges, a crossed-out trash can, IP20 protection level, CE mark, a diamond warning symbol, and a house icon with 'C' and 'D' labels.

Diagram showing the cable entry detail. The luminaire has a diameter of  $\varnothing 131$  and a cable entry diameter of  $\varnothing 84$ . The cable entry is labeled "CABLE ENTRY  $\varnothing 84$ ". The distance from the center of the luminaire to the cable entry is 63. The voltage rating is U : 220-240V.

**IP20**

Beschermd tegen vaste voorwerpen die groter zijn dan 12 mm  
 Protégé contre les objets solides de plus de 12 mm  
 Geschützt gegen Festkörper größer als 12 mm  
 Protected against solid objects greater than 12 mm  
 Protegido contra objetos sólidos superiores a 12 mm  
 Protetto contro oggetti solidi più grandi di 12 mm

Voorzien van aardingsaansluiting  
 Avec mise à la terre  
 Ausgerüstet mit Erdungsanschluss  
 Provided with grounding  
 Con la toma de tierra  
 Con presa a terra

**1**

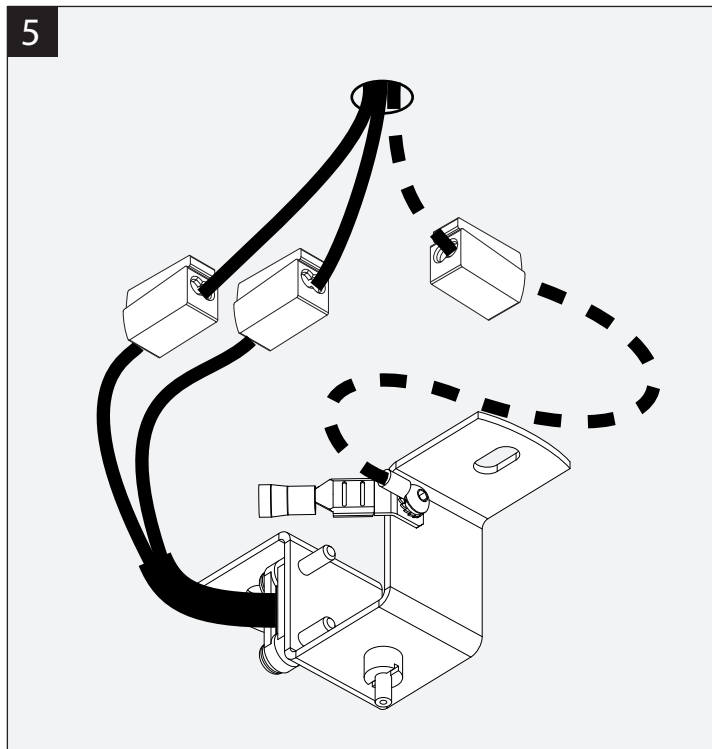
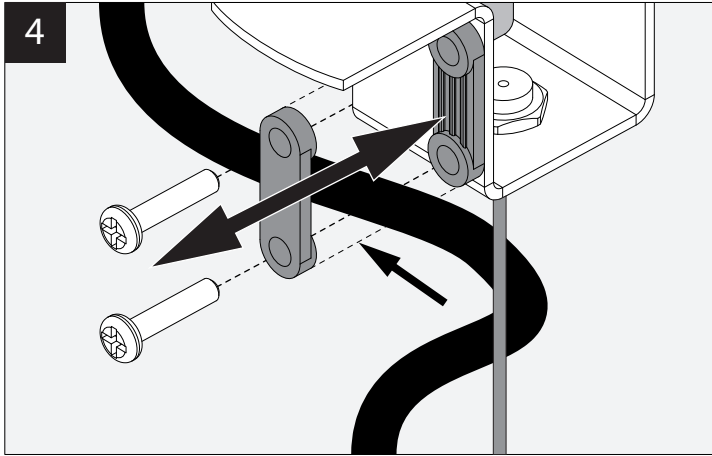
Diagram showing step 1: The luminaire is being attached to the mounting bracket. The luminaire is rotated (A) and the mounting bracket is rotated (B) to align the luminaire with the bracket.

**2**

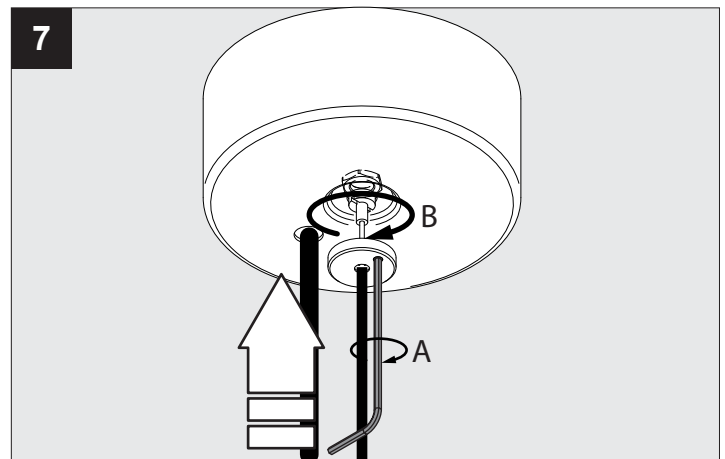
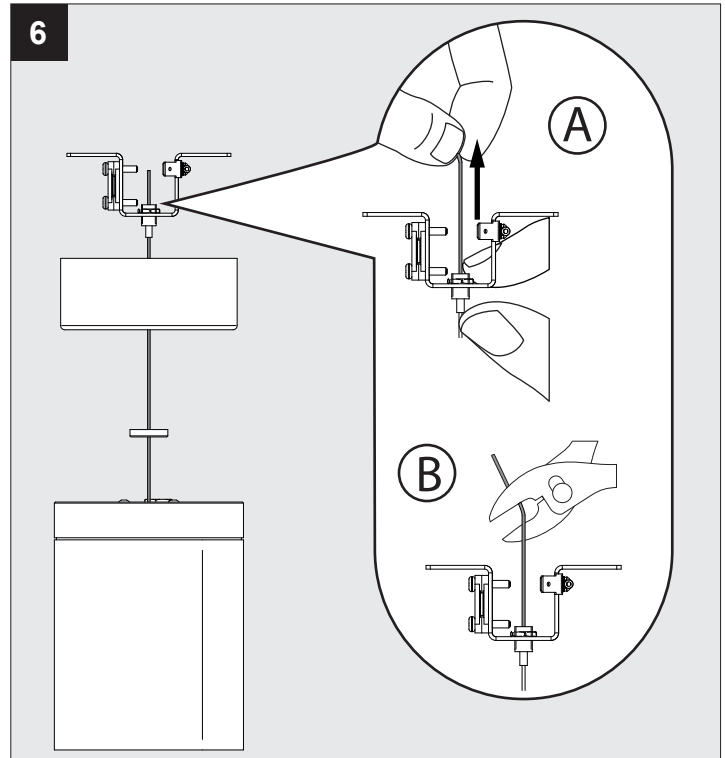
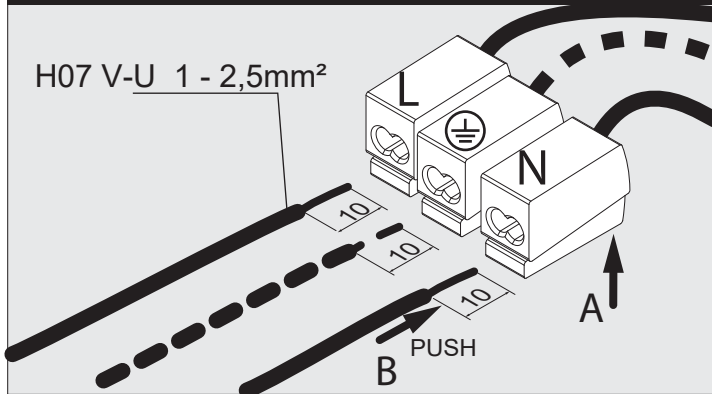
Diagram showing step 2: The luminaire is being mounted to the ceiling. Two screws are used to secure the luminaire to the ceiling.

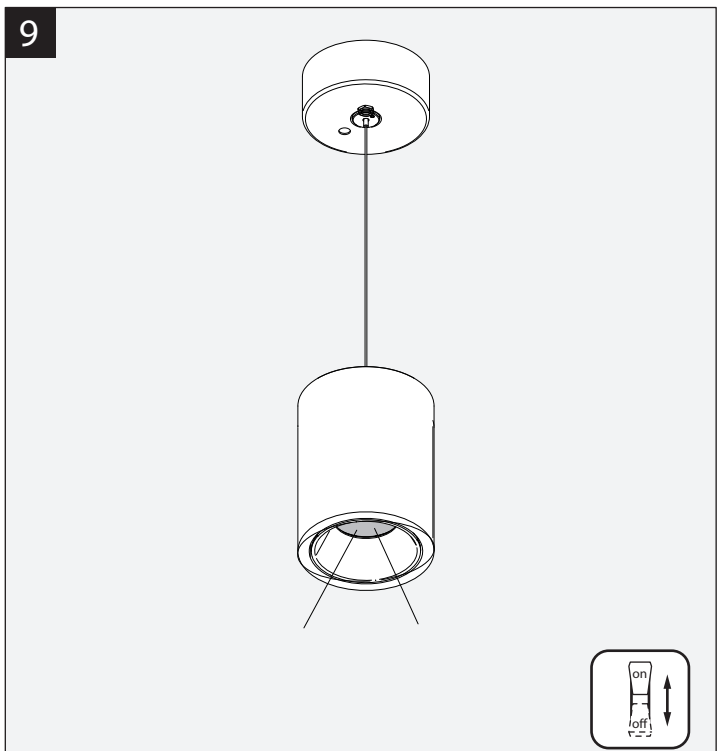
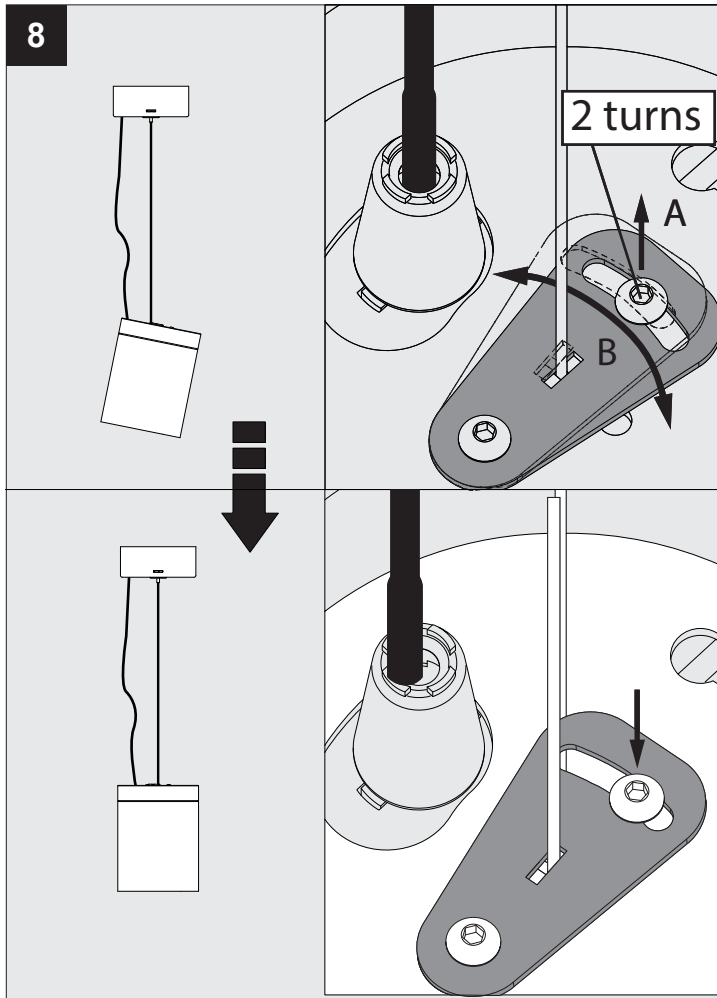
**3**

Diagram showing step 3: The luminaire is being connected to the power supply. The luminaire is being inserted into the power supply unit, and the power supply unit is being secured to the ceiling.



**MAINS DIMMING**





De verlichtingsbron van dit verlichtingstoestel zal enkel door de fabrikant of door de fabrikant aangestelde installateur vervangen worden.

La source lumière de cet appareil ne sera remplacée que par l'entreprise ou par un agent reconnu.

Das enthaltene Leuchtmittel sollte nur durch entsprechendes Fachpersonal ersetzt werden.

The light source contained in this luminaire shall only be replaced by the manufacturer or his service agent.

La fuente de iluminación que tiene esta luminaria sólo puede remplazarse por el fabricante o por un instalador autorizado.

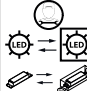
La sorgente luminosa incorporata in questo apparecchio può essere sostituita solo dal produttore, da un suo centro assistenza oppure da una persona in possesso della necessaria abilitazione.

This product contains a light source of energy efficiency class C  
 本产品包含能效等级为 C 的光源  
 Этот артикул содержит источник света с энергоэффективностью класса C  
 يحتوي هذا المنتج على مصدر ضوء ذو كفاءة الطاقة C

**C**

Dit product bevat een verlichtingsbron van energie-efficiëntieklasse C  
 Ce produit contient une source d'éclairage de classe d'efficacité énergétique C  
 Dieses Produkt enthält eine Lichtquelle der Energieeffizienzklasse C  
 Este producto contiene una fuente de iluminación de clase de eficiencia energética C  
 Questo prodotto contiene una fonte di illuminazione in classe di efficienza energetica C

Replaceable (LED only) light source and control gear by a professional  
 (仅针对LED)光源及其控制设备只能由专业人士更换  
 (для СВЕТОДИОДНЫХ светильников) замена источника света и блока питания может быть произведена только квалифицированным специалистом



Verlichtingsbron (enkel LED) en voorschakelapparaat kan enkel vervangen worden door een professional  
 La source d'éclairage (uniquement LED) et le ballast ne peut être remplacé que par un professionnel  
 Die Lichtquelle (nur LED) und Vorschaltgerät kann nur von einem Fachmann ausgetauscht werden  
 La fuente de iluminación (solo LED) solo puede ser reemplazada por un profesional  
 La sorgente luminosa (LED) e l'alimentatore possono essere sostituiti solo da un professionista.

This product contains a light source of energy efficiency class D at 2700K, CRI90  
 本产品包含能效等级为 D 2700K · CRI90 的光源  
 Этот артикул содержит источник света с энергоэффективностью класса D, 2700K, CRI90  
 يحتوي هذا المنتج على مصدر ضوء ذو كفاءة الطاقة D في 2700K, CRI90

**D**

Dit product bevat een verlichtingsbron van energie-efficiëntieklasse D, bij 2700K, CRI90  
 Ce produit contient une source d'éclairage de classe d'efficacité énergétique D pour 2700K, CRI90  
 Dieses Produkt enthält eine Lichtquelle der Energieeffizienzklasse D bei 2700K, CRI90  
 Este producto contiene una fuente de iluminación de clase de eficiencia energética D en 2700K, CRI90  
 Questo prodotto contiene una fonte di illuminazione in classe di efficienza energetica D a 2700K, CRI90