

HALO

Design by Martin Azua.

VIBIA

Reference

2351.

Application

Hanging lamps

Installation type

Surface

Description

Hanging lamp. Providing an ambient or indirect light through its circular methacrylate diffuser. The diffuser is supported by a fine grade steel structure.

Diffuser

Methacrylate diffuser

Materials

Diffuser: Methacrylate
LED support: Aluminum
Pendant structure: Steel
Ceiling rose: Steel

Finish



2351-11 Black (NCS S 8500N)



2351-20 Gold finish (Gold)

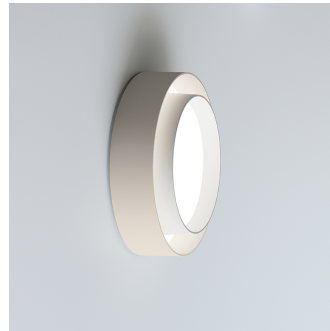
Sketch



Electrical characteristics

1 x LED STRIP 24V 23W

Total 23.0 W



Light source: 3000K CRI >80 2274.17 lm 98.87 lm/W

Fixture: 1726.78 lm 75.07 lm/W

Driver included: CC - Constant Current 100-277V 50/60Hz

Electronic dimming 1-10V

ficha.fichatecnicaproducto.regulacion.opcional DALI or Casambi

Technical characteristics

- Surface

Physical characteristics

1 Box / 0.00 x 0.00 x 0.00 m. / Vol. 0.0000 m³ /

Gross weight 0.0 kg. / Net weight 0.0 kg.

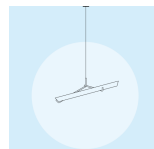
Installation and assembly

Please, see the installation manual

Light distribution

General lighting

Lamp for general lighting that equally distributes the light in all directions.



Photometric data

Certificates

