

# HALO

Design by Martin Azua.

# VIBIA

## Reference

**2356.**

## Application

Hanging lamps

## Installation type

Surface

## Description

Hanging lamp. Providing an ambient or indirect light through its vertical methacrylate diffuser. The diffuser is supported by a fine grade steel structure. The back part of the diffuser in steel is finished in either a gold or black colour lending it a clean decorative aesthetic.

## Diffuser

Methacrylate diffuser

## Materials

Diffuser: Methacrylate  
LED support: Aluminum  
Pendant structure: Steel  
Ceiling rose: Steel

## Finish

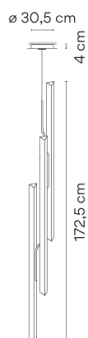


**2356-11** Black (NCS S 8500N )



**2356-20** Gold finish (Gold)

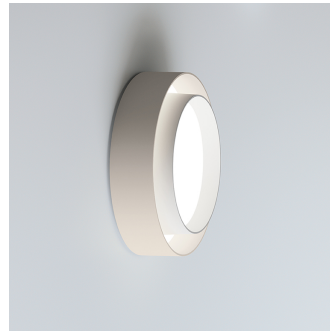
## Sketch



## Electrical characteristics

3 x LED STRIP 24V 15,3W

Total 45.9 W



**Light source:** 3000K CRI >80 4584 lm 99.87 lm/W

**Fixture:** 3472.02 lm 75.64 lm/W

**Driver included:** CC - Constant Current 100-277V 50/60Hz

**Electronic dimming** 1-10V

**ficha.fichatecnicaproducto.regulacion.opcional** DALI or Casambi

## Technical characteristics

- Surface

## Physical characteristics

1 Box / 0.00 x 0.00 x 0.00 m. / Vol. 0.0000 m<sup>3</sup> /

Gross weight 0.0 kg. / Net weight 0.0 kg.

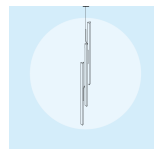
## Installation and assembly

Please, see the installation manual

## Light distribution

### General lighting

Lamp for general lighting that equally distributes the light in all directions.



## Photometric data

## Certificates

