

BAMBOO

Design by Antoni Arola & Enric Rodríguez.

Reference

4800.

Application

Outdoor lamps

Installation type

Surface

Description

Bamboo is an outdoor beacon with three finishes that make it possible to camouflage and integrate it into the landscape, with the added surprise that it produces light. Available in khaki, stainless steel and off-white. Designed by Antoni Arola & Enric Rodríguez.

Diffuser

Methacrylate diffuser

Materials

Cane: Resin + fiberglass

Diffuser: Methacrylate

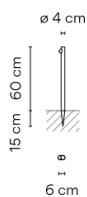
Finish

4800-07 Khaki (RAL 7006)

4800-54 Matt oxide lacquer (RAL 8017)

4800-58 Off-white matt (Pantone Warm Gray 2 U)

Sketch



Electrical characteristics

1 x LED2,1W 700mA

Total 2.3 W



VIBIA



Light source: 2700K CRI >80 199 lm 95 lm/W

Fixture: 48 lm 23 lm/W

Driver included: CC - Constant Current 700 mA 100-240V 50/60Hz

Electronic dimming NO DIM

Physical characteristics

1 Box / 0.13 x 0.13 x 1.30 m. / Vol. 0.0203 m³ /

Gross weight 4.0 kg. / Net weight 3.6 kg.

Installation and assembly

Please, see the installation manual

Light distribution

Ground lighting

Reduced-height outdoor lamp to shade light on the ground.



Photometric data

Efficiency : 26.27%

Coordinate system : CG

Total flux : 181.22 lm

Maximum value : 287.63 cd/klm

Light position : C=270.00 G=50.00

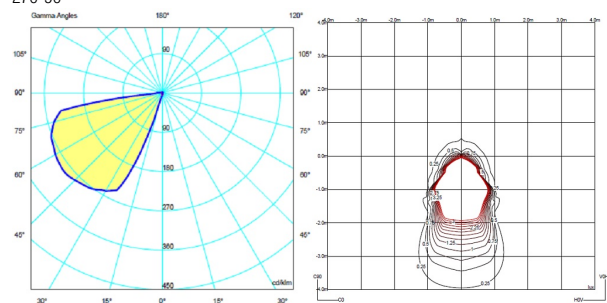
Symmetry on the planes : Symmetrical planes

270-90

Isolux : Floor

Light position :

X=0.00m Y=0.00m Z=0.56m



Certificates

