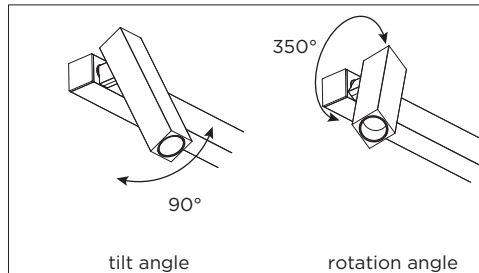
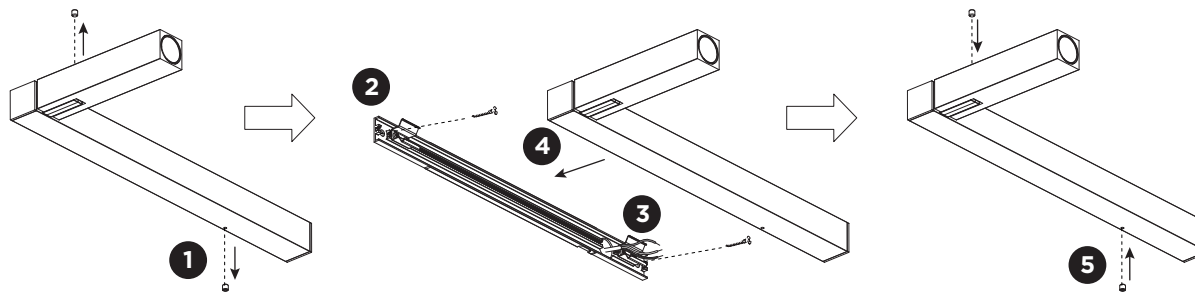
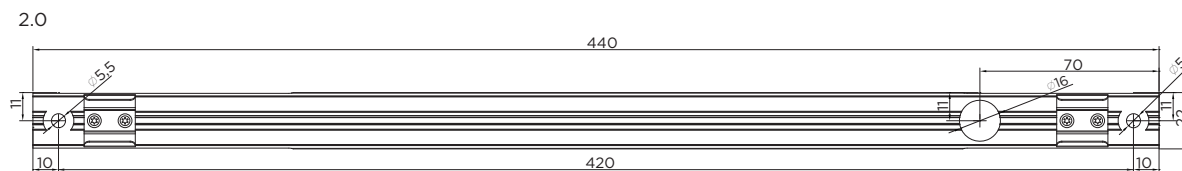
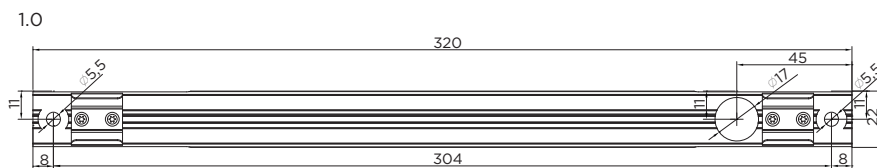


MICK WALL

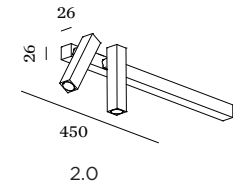
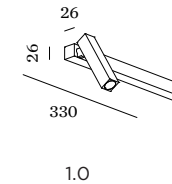
INSTALLATION INSTRUCTIONS | JULY 2020



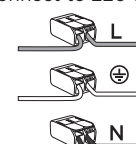
Mounting base:



DIMENSIONS



MOUNTING INSTRUCTION

- 1 Loosen the two socket screws from the fixture.
- 2 Remove the mounting base from the fixture and mount it on the wall with screws (screws are not included).
- 3 POWER CONNECTION
Connect to 220-240V.

- 4 Attach the fixture to the mounting base by sliding it over completely against the wall.
- 5 Lock the fixture on the mounting base with the two socket screws.