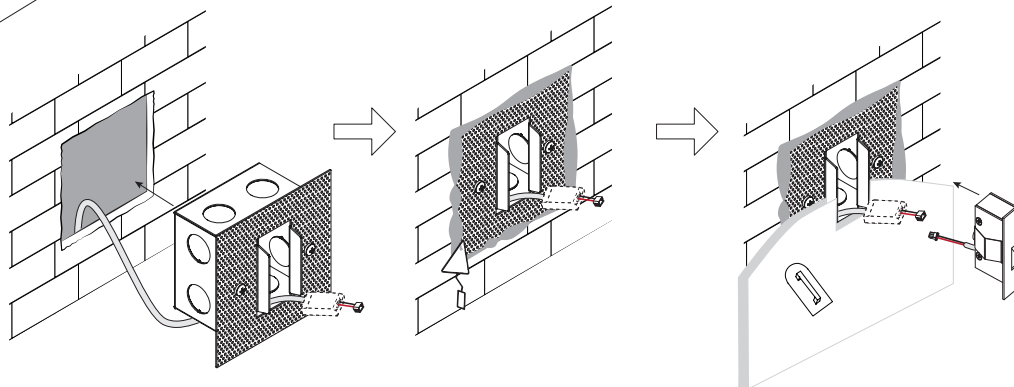
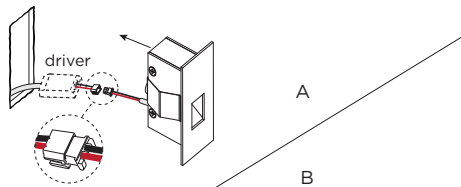


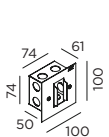
STRIBE

INSTALLATION INSTRUCTIONS | DECEMBER 2022

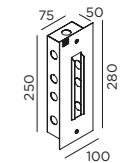
3 mounting options:



recessed housing incl. plasterkit (optional):



75x75 55
90012037
for STRIBE 0.4 | 0.7



251x76 55
90012038
for STRIBE 2.2

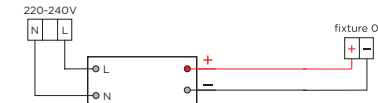
DIMENSIONS

0.4		25x56	40	8-18
0.7		25x56	40	8-18
2.2		25x170	40	8-18

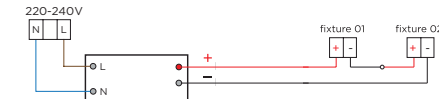
MOUNTING INSTRUCTION

- 1 Make a hole in the wall according to the prescribed dimensions of the fixture or the recessed housing.
- 2 **POWER CONNECTION**
Connect to 220-240V. Always use a driver according to the specifications of the LED module.

Single connection



Multiple connection

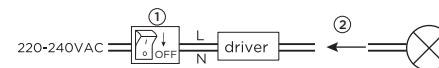


- 3 A - Insert the fixture in the hole.
B - Insert the fixture in the plasterkit.



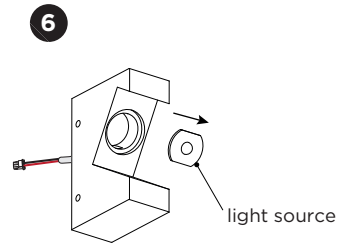
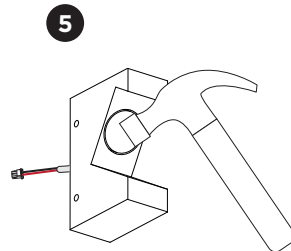
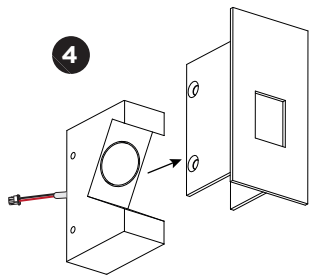
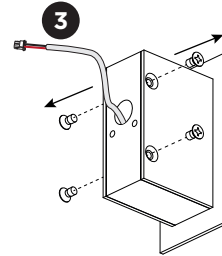
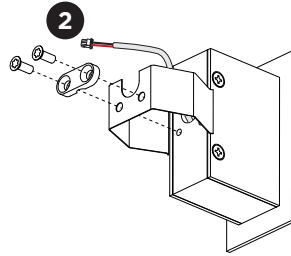
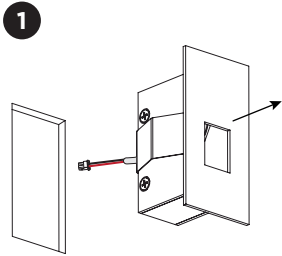
Driver must be powered off before connecting cables.

Before connecting the luminaire/LED module to the driver please make sure the driver is not powered but disconnected from the mains. The driver can only be powered when the luminaire/LED module is already connected. Disregarding this instruction might damage or even destroy the luminaire/LED module.



STRIPE

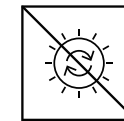
INSTALLATION INSTRUCTIONS | DECEMBER 2022



DISMOUNTING AND RECYCLING INSTRUCTIONS

Light source

- 1 Dismount the fixture in opposite direction to the mounting instruction and disconnect the connector.
- 2 Loosen the back screws and remove the spring.
- 3 Loosen the side screws.
- 4 Remove the cover.
- 5 Break the glass.
- 6 Disconnect the wires and remove the light source.



The light source is not replaceable.



This luminaire contains a light source with the energy class F.



WEVER & DUCRÉ
LIGHTING

WEVER & DUCRÉ BV
Spinnerijstraat 99/21, 8500 Kortrijk, Belgium
weverducre.com