

Caboche Plus, parete

by Patricia Urquiola , Eliana Gerotto

FOSCARINI



DESCRIPTION

Caboche was created in 2005 as a result of the desire to create a precious and charming lamp like a pearl brace-let, accommodated with a focus on light weight and transparency. Rich, bright and sophisticated, it was a success from the onset, becoming one of Foscarini's biggest bestsellers, and went on to become a genuine icon of designer lighting. It is now presented in the Plus version, with a new LED which guarantees a more in-tense light yet without creating glare. Total transparency wins in Caboche Plus, as your eyes roam through the entire lamp thanks to the new zigzagging arches which do not shield the light. What's more, the new attachment system, which is even simpler and more user-friendly, guarantees greater stability for the sphere and makes it simply to use.

MATERIALS

PMMA, steel and liquid coated aluminium

COLORS

Grey, Transparent

Caboche Plus, parete

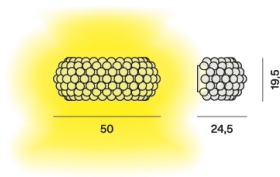
technical details

FOSCARINI

Wall lamp with diffused light. Anodised aluminium mount. Structure comprising transparent PC arches, onto which a series of PMMA spheres are applied, using the new twist lock system. The lamp body consists of two LEDs, with mains voltage.

Caboche media

SCHEMATIC & LIGHT EMISSION



MATERIAL

PMMA, steel and liquid coated aluminium

COLORS



ACCESSORIES

Caboche Plus

LIGHT SOURCE

17,5W R7s
dimmable

CERTIFICATIONS



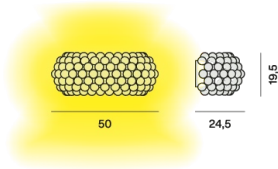
IP 20

Caboche Plus, parete

technical details

FOSCARINI

SCHEMATIC & LIGHT EMISSION



MATERIAL

PMMA, steel and liquid coated aluminium

COLORS



ACCESSORIES

Caboche Plus

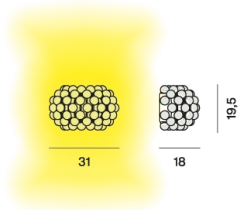
LIGHT SOURCE

CERTIFICATIONS



Caboche piccola

SCHEMATIC & LIGHT EMISSION



MATERIAL

PMMA, steel and liquid coated aluminium

COLORS



ACCESSORIES

Caboche Plus

LIGHT SOURCE

17,5W R7s

CERTIFICATIONS

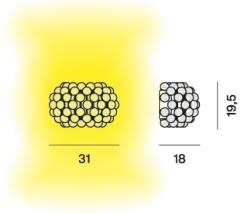


Caboche Plus, parete

technical details

FOSCARINI

SCHEMATIC & LIGHT EMISSION



MATERIAL

PMMA, steel and liquid coated aluminium

COLORS



ACCESSORIES

Caboche Plus

LIGHT SOURCE

CERTIFICATIONS



IP 20

Caboche Plus, parete

Designer

FOSCARINI

PATRICIA URQUIOLA

An internationally renowned architect and designer, Patricia Urquiola has received multiple major acknowledgements such as the “Designer of the Decade” title from the Home and Häuser magazines, and “Designer of the Year” from Wallpaper, Ad Spain, Elle Decor International and Architektur und Wohnen Magazine.

Some of her projects are exhibited in several museums and collections. Together with Eliana Gerotto, industrial designer, curator of outfits and interior decorator, she has designed Caboche, a precious, luminous emotion that stems from a combination of technology and creativity.



Caboche Plus, parete

Designer

FOSCARINI

ELIANA GEROTTO

A Venetian, she obtained her diploma in Communication Techniques in Milan. She has worked as a graphic designer for the Parisian magazine, Elle, and for the Venice Biennale, while she co-operates with some major Italian brands as image and product consultant.

Her creative entrepreneurship drives her towards ever-differing professional experiences, from interior designs to furnishings and even jewellery. Together with Patricia Urquiola, she has designed Caboche, a precious, luminous emotion that stems from a combination of technology and creativity.



Caboche Plus, parete
family

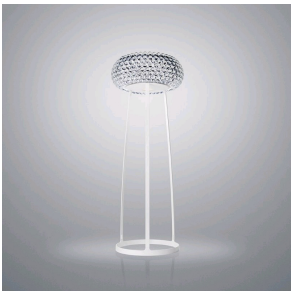
FOSCARINI



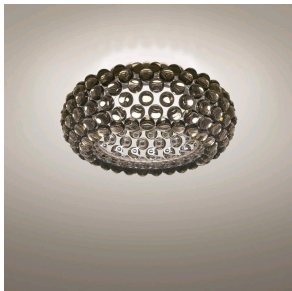
Caboche Plus



Caboche Plus



Caboche Plus



Caboche Plus