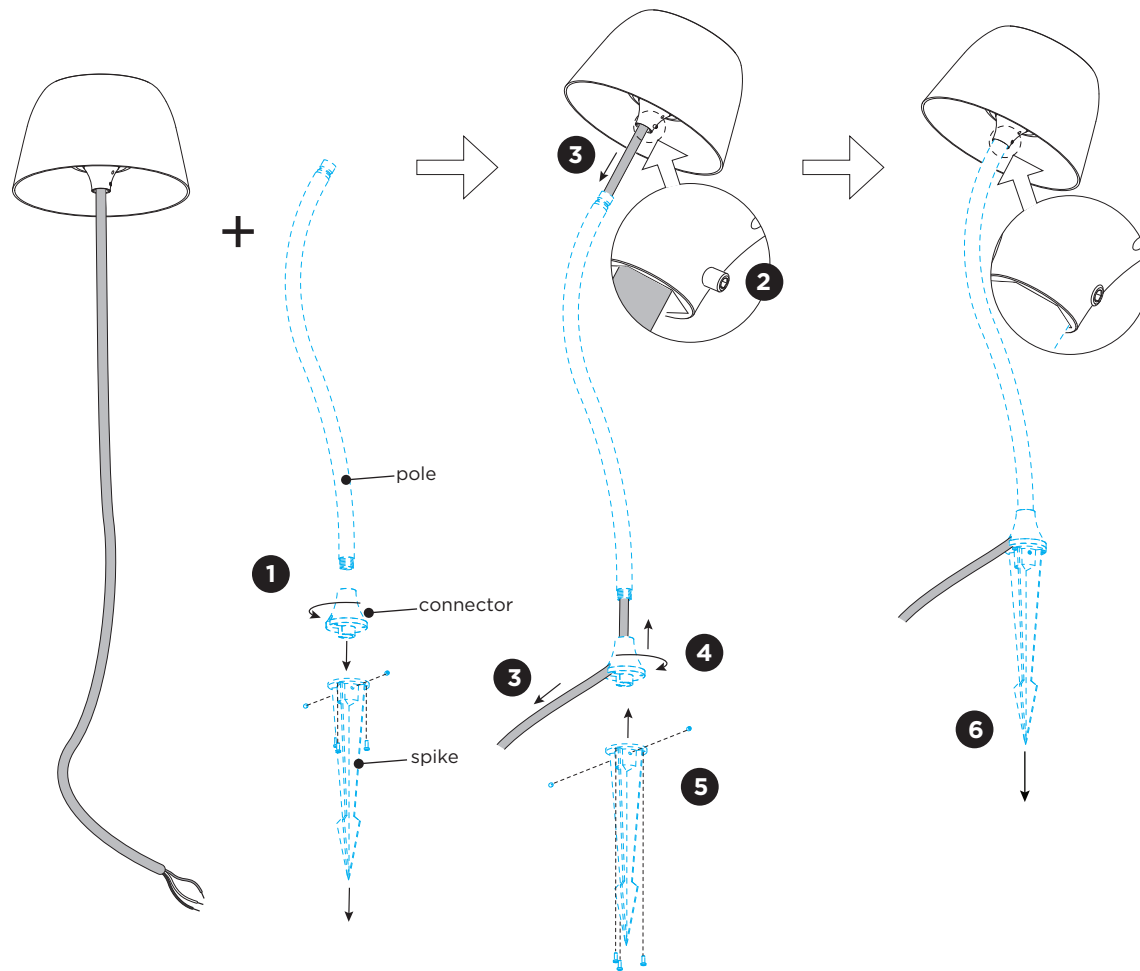


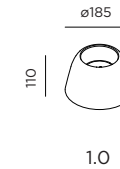
# SWAM floor surface

INSTALLATION INSTRUCTIONS | MAY 2020

installation with curved post

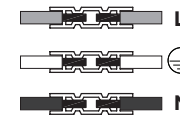


## DIMENSIONS



## MOUNTING INSTRUCTION

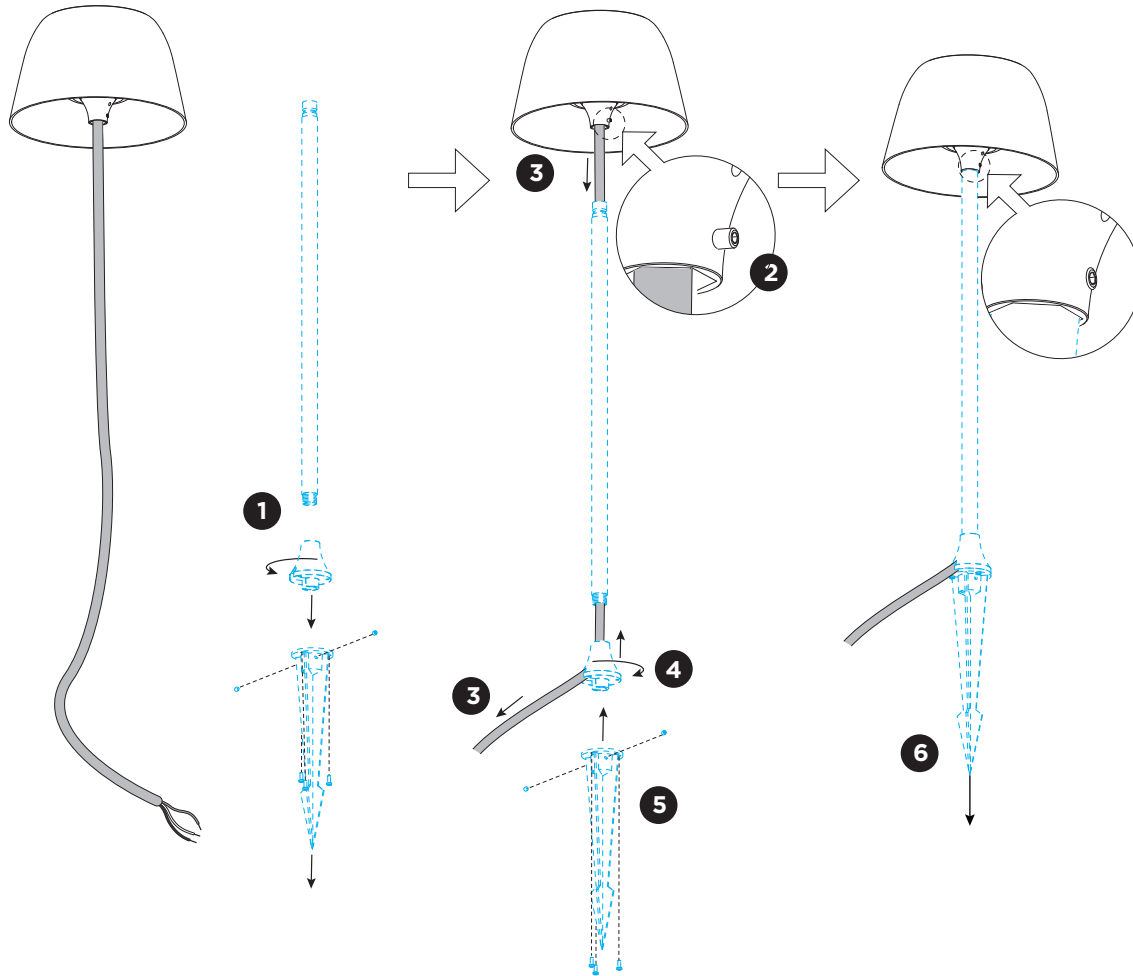
- 1 Take the pole, connector and spike apart.
- 2 Unscrew the strain relief screw. (Tighten it again after the cable and the pole are assembled.)
- 3 Guide the cable through the pole and the connector.
- 4 Screw back the connector to the pole.
- 5 Reassemble the spike to the connector.
- 6 Insert the spike into the ground.
- 7 **POWER CONNECTION**  
Connect to 220-240V. Connect the wires with the waterproof connections. Please see the detail method in the separate instruction sheet of waterproof connection.



# SWAM floor surface

INSTALLATION INSTRUCTIONS | MAY 2020

installation with straight post



installation with ground plate

