

## Cestita Metálica

Miguel Milá. 1962  
Table Lamps



The Cestita Metálica is meant to stay put, hence its lack of a handle.

### General description:

Stainless steel structure.

White opal glass lampshade.

Electric cable length: 2,25 m / 88.6"

### Approximate weight (unpacked):

2,5 kg / 5.51 lb

### Technical information:

European version: Light source included (dimmable)

American version: Recommended dimmable light source (not included)

LED bulb: 4,8 W / 470 lm / 2700K

E27 - E26 / Max. hgt. 105 mm / 4.1"

Includes dimmer (dimmable light source required).

Suitable only for indoor use.

Always use the light source recommended or equivalent.

Input voltage: 100, 120, 230 Vac.

(50 Hz / 60 Hz). According to destination

### Regulations:

European version

UNE-EN 60598

UNE-EN 55015

UNE-EN 60529

American version

Dry location only

UL-153

E-352592

### Maintenance:

Clean with a smooth cloth. Do not use ammonia, solvents or abrasive cleaning products.

### Others:

The lamp is delivered in one package.

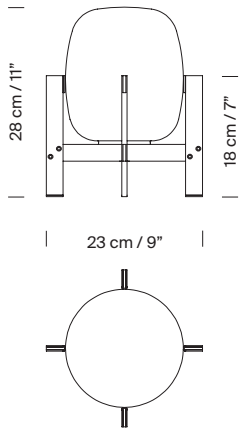
The assembly instructions are delivered with the product.

# Cestita Metálica

Miguel Milá. 1962

Table Lamps

## Model:



## Collection:

Table lamps



Cesta



Cestita



Cesta Batería



Cesta Metálica



Cestita Metálica

Pendant lamps



Globo Cesta



Globo Cestita



Wally Cesta



Wally Cestita



Cesta exterior



Cestita Alubat

Wall lamps (Outdoor)

Outdoor lamps