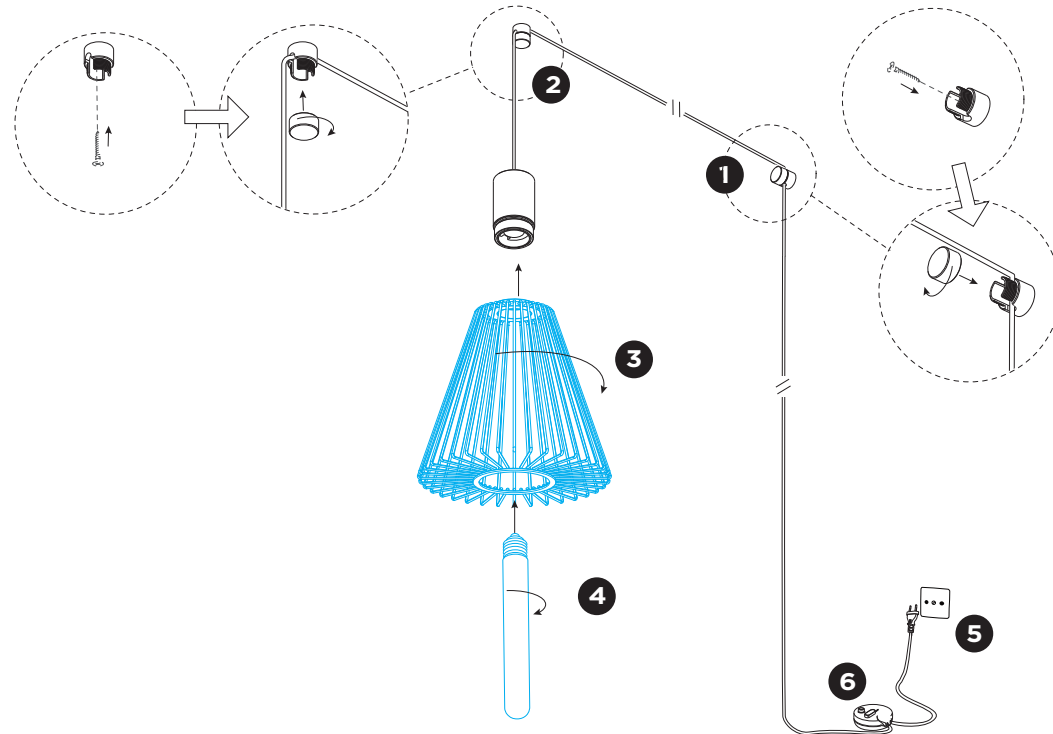
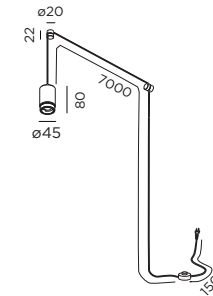


# WIRO CABLE PLUG AND PLAY

INSTALLATION INSTRUCTIONS | MAY 2023



## DIMENSIONS



CABLE PLUG AND PLAY

## MOUNTING INSTRUCTION

- 1** Mount the cable bracket on the wall and fix the cable between the two parts.
- 2** Mount the cable bracket on the ceiling and fix the cable between the two parts.
- 3** Mount the shade on the fixture by turning clockwise.
- 4** Mount the bulb.
- 5** Connect the power with the plug.
- 6** The power can be adjusted and switched with the slide dimmer.

This suspension set can be applied to several Wiro shades.  
Such as:

