

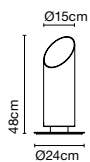
Eclipse

Josep Lluís Xuclà

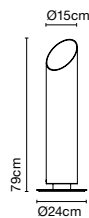
marset



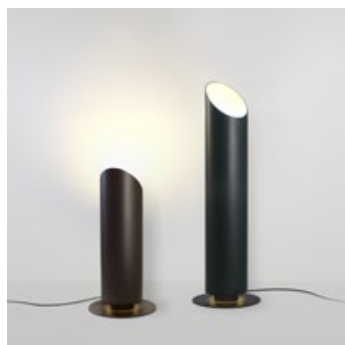
Elipse P 48



Elipse P 79



* Cable length - 2,5 m.



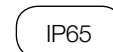
Elipse P48 / P79

LED 15W 2700K CRI90
Light source- 1050lm
(included)

Lacquered aluminium tube, the interior always in white finish.

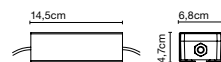
- Graphite grey (RAL 7024)
- Brown (RAL 8019)

Black electrical cord.



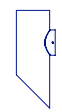
- [Download](#) Assembly instructions
- [Download](#) Energy label
- [Download](#) 2D
- [Download](#) 3D
- [Download](#) Photometric data

Dimmer Casambi IP65



ABS case with powder-coated aluminum trim. Bluetooth smart wireless trailing edge dimmer that adjusts light intensity or switches the lamp ON/OFF. Available in Android or iOS with the app Casambi.

Range

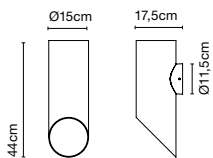


info@marset.com
www.marset.com

In expansive outside settings this lamp enhances the light that it emits as it interplays with whatever it illuminates: a tree, a garden, a wall, or a façade.



Elipse A



Elipse A

2x LED 10W 2700K CRI90
Light source - (x2) 700lm
(included)

**Lacquered aluminium tube, the interior
always in white finish.**

- Graphite grey (RAL 7024)
- Brown (RAL 8019)

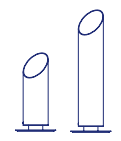
IP65



info@marset.com
www.marset.com

- [Download](#) Assembly instructions
- [Download](#) Energy label
- [Download](#) 2D
- [Download](#) 3D
- [Download](#) Photometric data

Range



In expansive outside settings this lamp enhances the light that it emits as it interplays with whatever it illuminates: a tree, a garden, a wall, or a façade.