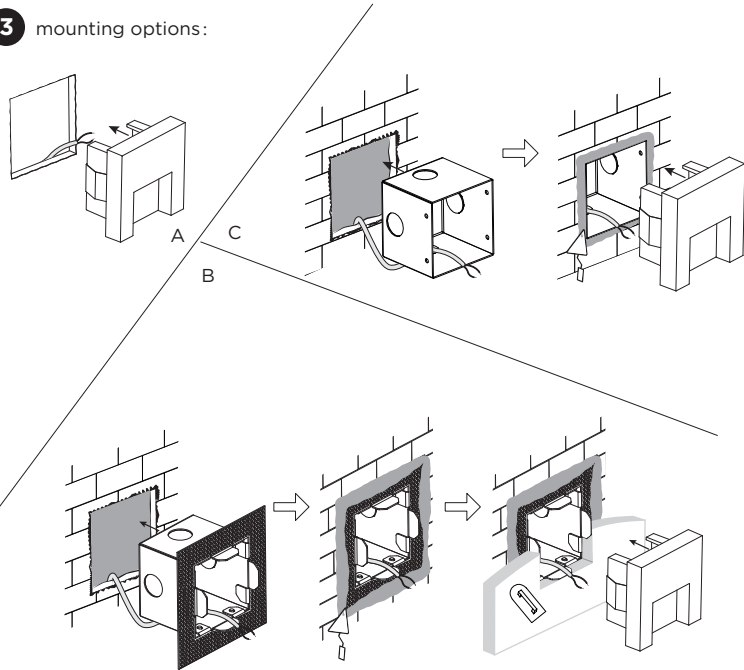




# RETO wall recessed

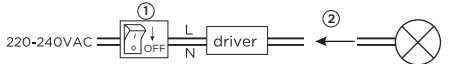
INSTALLATION INSTRUCTIONS | DECEMBER 2022

### 3 mounting options:

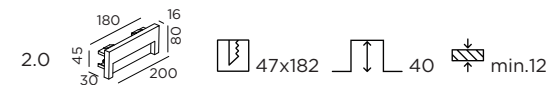


  Before connecting the luminaire/LED module to the driver please make sure the driver is not powered but disconnected from the mains. The driver can only be powered when the luminaire/LED module is already connected. Disregarding this instruction might damage or even destroy the luminaire/LED module.

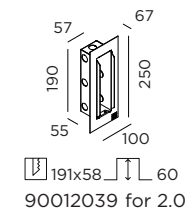
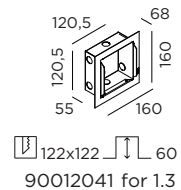
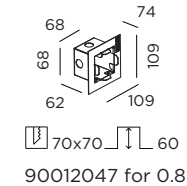
Driver must be powered off before connecting cables.



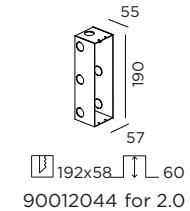
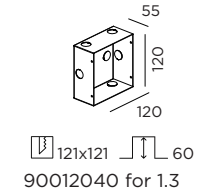
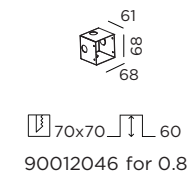
### DIMENSIONS



recessed housing incl. plasterkit (optional):



concrete housing (optional):

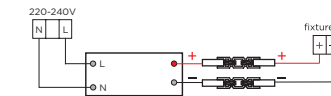


### MOUNTING INSTRUCTION

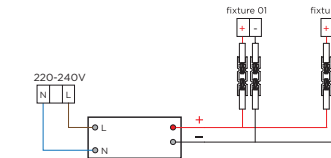
**1** Make a hole in the wall according to the prescribed dimensions of the fixture or the recessed housing.

**2** **POWER CONNECTION**  
Connect to 220-240V. Always use a driver according to the specifications of the fixture.

#### Single connection for outdoor

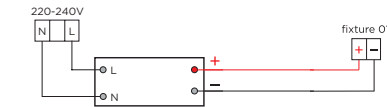


#### Multiple connection for outdoor

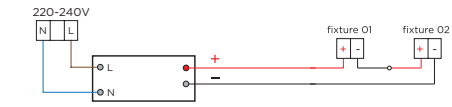


Connect the wires with the waterproof connectors. Please see the detail method in the separate instruction sheet of waterproof connection. Make sure to use a waterproof connection with the same IP rating as the luminaire.

#### Single connection for indoor



#### Multiple connection for indoor

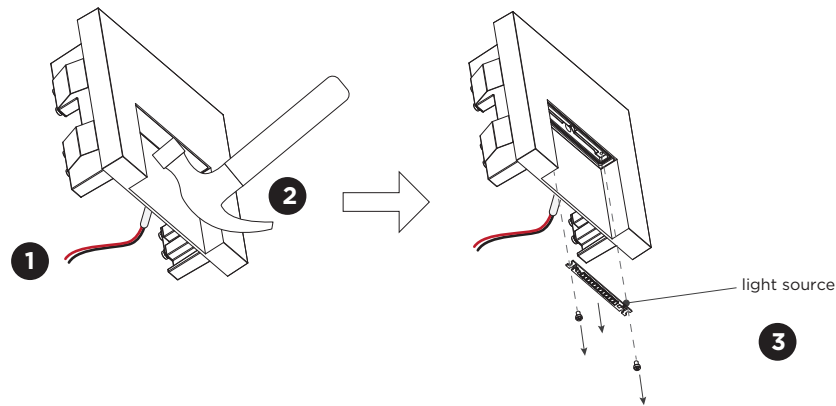


**3** A - Insert the fixture in the hole.  
B - Insert the fixture in the plasterkit.  
C - Insert the fixture in the concrete housing.

PB19-010-792-00\_V2

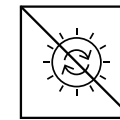
# RETO wall recessed

INSTALLATION INSTRUCTIONS | DECEMBER 2022





## DISMOUNTING AND RECYCLING INSTRUCTIONS Light source

- 1** Pull out the fixture and disconnect the wires between the fixture and the driver.
- 2** Break the lens.
- 3** Unscrew the light source, disconnect the wires and remove it.



The light source is not replaceable.

This luminaire contains a light source with the corresponding energy class:

RETO luminaire type	Energy class
outdoor 0.8/1.3/2.0	
indoor 0.8	
indoor 2.0	