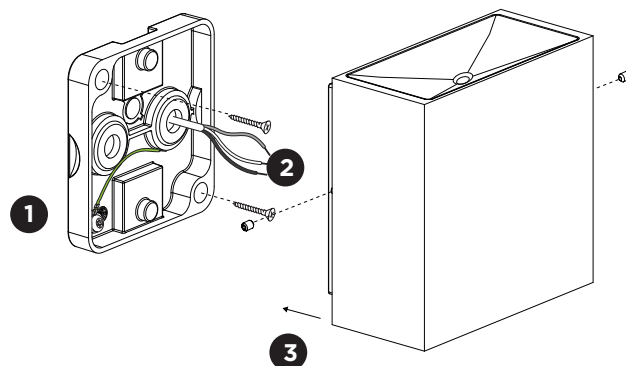
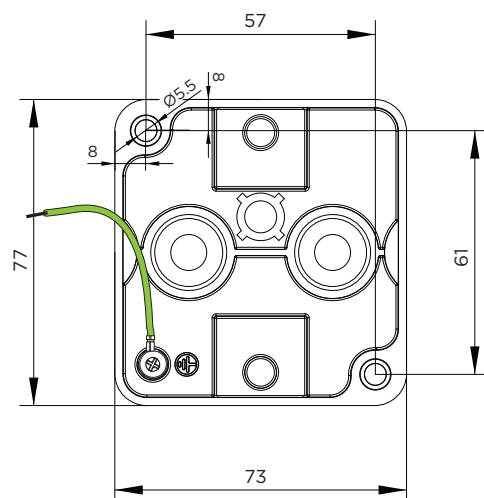


CENTRAL

INSTALLATION INSTRUCTIONS | NOVEMBER 2021



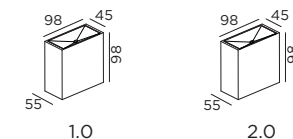
Mounting base:



grommets:

	A	B	C	D
CABLE				
TYPE	ROUND H05RN-F H07RN8-F H07RN-F	ROUND H05RN-F	ROUND	ROUND
OUTSIDE Ø	min 6.8mm max 8.9mm	min 5mm max 6.8mm	min 1.5mm max 2.6mm	min 1.5mm max 2.6mm
CONDUCTION SECTION	2or3x 0.75mm ² 2or3x 1.0mm ² 2or3x 1.5mm ²	2or3x 0.75mm ² 2x 1.0mm ²	0.75mm ² 1.5mm ²	0.75mm ² 1.5mm ²

DIMENSIONS

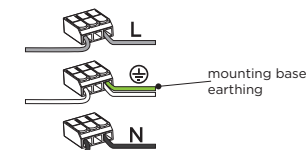


MOUNTING INSTRUCTION

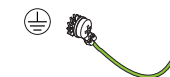
- 1 Remove the mounting base from the luminaire by loosening the side screws and mount it on the wall with screws (screws are not included).

2 POWER CONNECTION

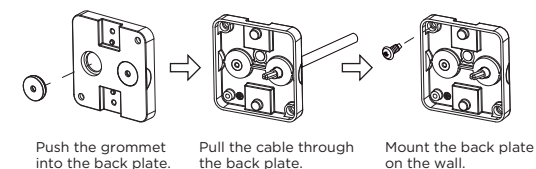
connect to 220-240V



Connect the earth cable.



Please use a matching grommet based on the used 220-240V cable and the corresponding type in the overview table.

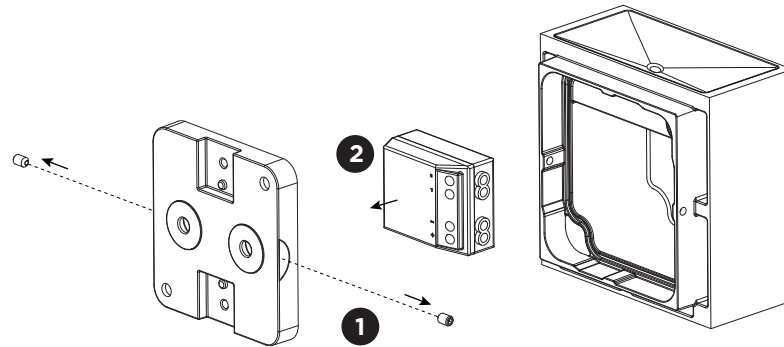


- 3 Fix the luminaire to the mounting base with the side screws.

CENTRAL

INSTALLATION INSTRUCTIONS | NOVEMBER 2021

indoor version:



DISMOUNTING INSTRUCTION

Driver

- 1 Loosen the side screws and remove the lamp housing from the mounting base.
- 2 Loosen the wires, then the driver can now be removed.

outdoor version:

