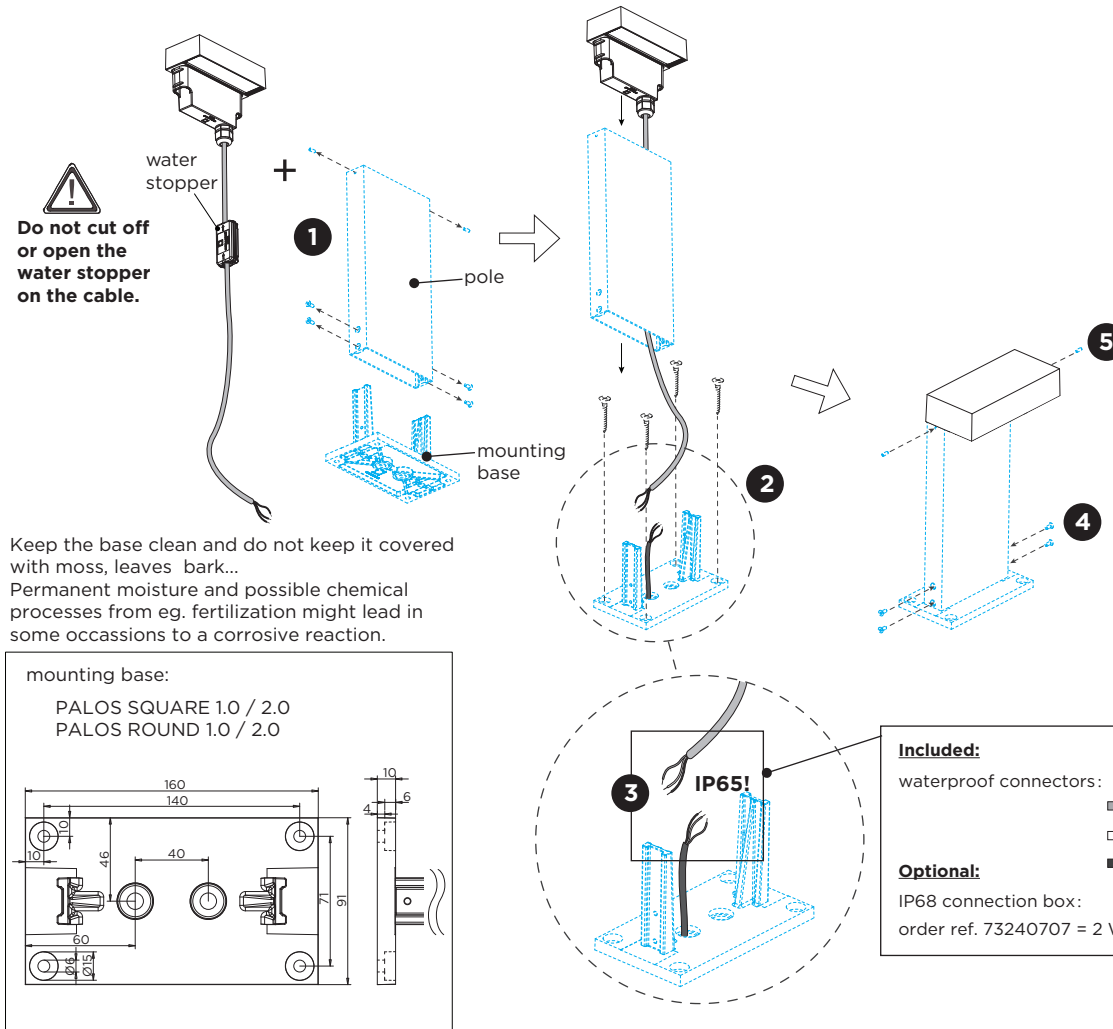
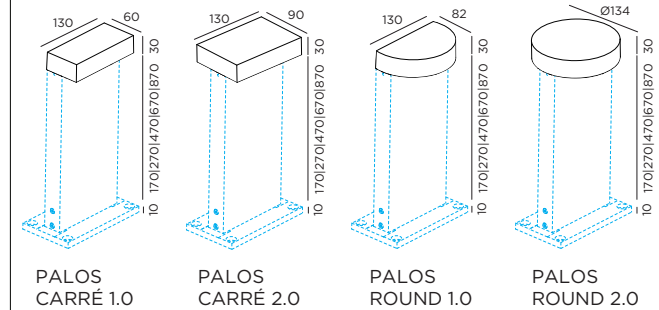


installation with fixation plate



DIMENSIONS



MOUNTING INSTRUCTION

- 1 Remove the mounting base from the pole by loosening the screws.
- 2 Mount the base on the floor with screws. (screws are not included.)
- 3 **POWER CONNECTION**
Connect to 220-240V. Connect the wires with the waterproof connections. Please see the detail method in the separate instruction sheet of waterproof connection.
- 4 Fix the pole on the mounting base with the included screws.
- 5 Fix the luminaire on the pole with the included socket screws.

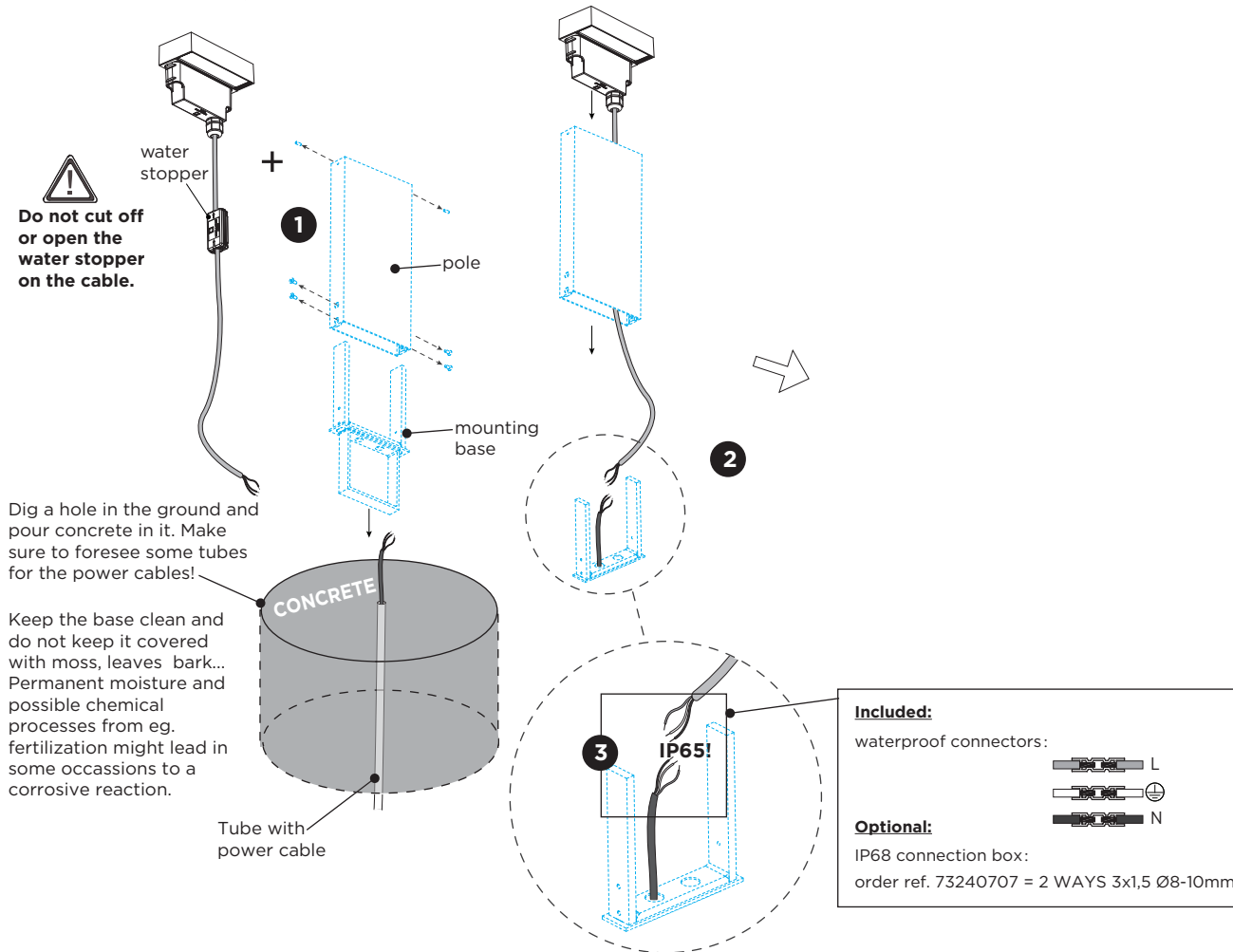
For installation with concrete ground fixation, please see the page 2.

PB19-010-74+00_V2

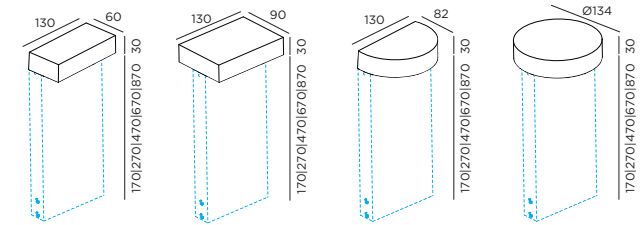
PALOS

INSTALLATION INSTRUCTIONS | MARCH 2022

installation with concrete ground fixation



DIMENSIONS



PALOS
CARRÉ 1.0

PALOS
CARRÉ 2.0

PALOS
ROUND 1.0

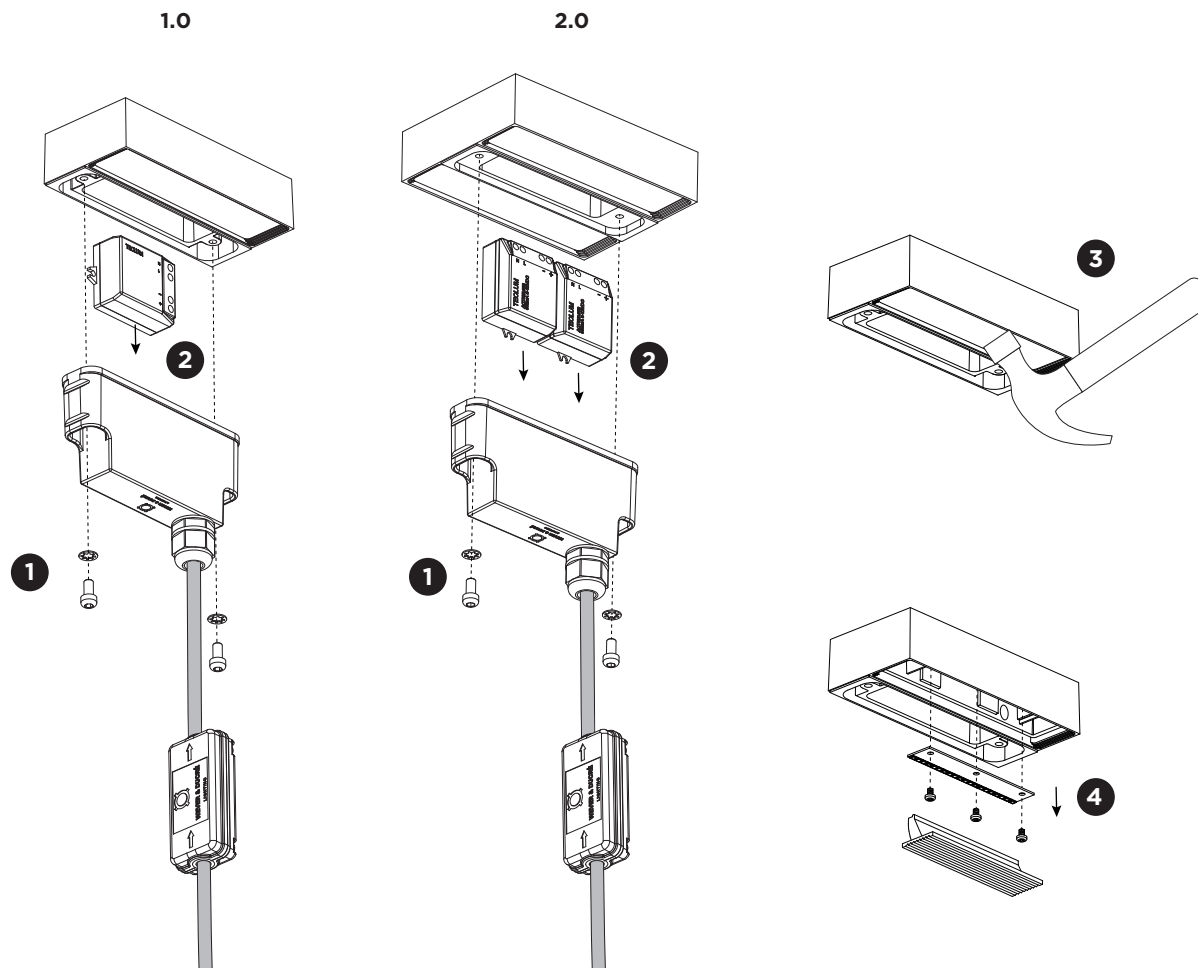
PALOS
ROUND 2.0

MOUNTING INSTRUCTION

- 1 Remove the mounting base from the pole by loosening the screws.
- 2 Mount the base in the floor with concrete.
- 3 **POWER CONNECTION**
Connect to 220-240V. Connect the wires with the waterproof connections. Please see the detail method in the separate instruction sheet of waterproof connection.
- 4 Fix the pole on the mounting base with the included screws.
- 5 Fix the luminaire on the pole with the included socket screws.

PALOS

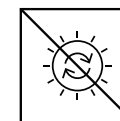
INSTALLATION INSTRUCTIONS | MARCH 2022



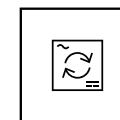
DISMOUNTING INSTRUCTION

Light source & driver

- 1 Unscrew the housing and remove it from the luminaire.
- 2 Loosen the wires to remove the driver(s).
- 3 Break the glass.
- 4 Take out the lens and unscrew the LED board.



The light source is not replaceable.



The driver(s) can be replaced by the end user.



This luminaire contains a light source with the energy class D.