





## LIMBUS

The Limbus is a direct light pendant lamp designed by Emanuele Ricci. It looks like a small luminous planet shining its light downwards.

This lamp is a perfect synthesis of form and function, in which optics, thermodynamics, glass engineering and precision metal working combine to create a pure and essential product in the most authentic Lumina style.

It consists of a glass sphere (ø 12cm) and an aluminium ring that horizontally separates the two hemispheres.

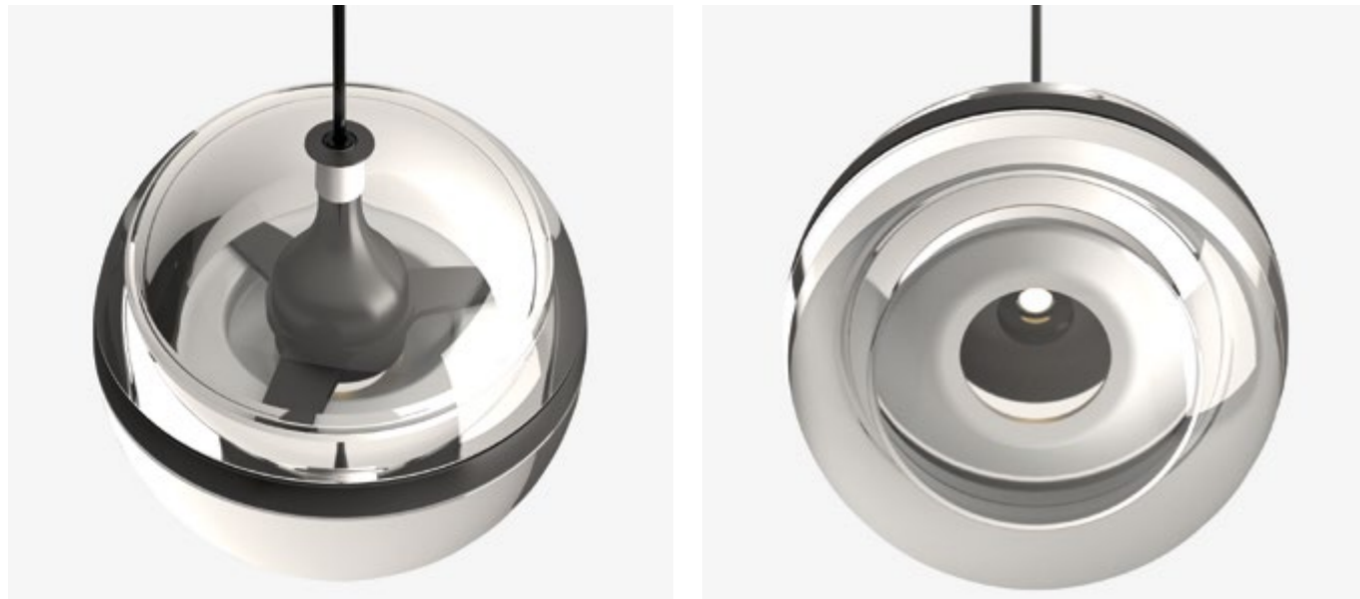




The hemispheres are made of high thickness Bohemian patterned glass. The bottom hemisphere is the optical component (lens) and protects the light source. It was engineered to produce direct light shining downward at an angle of 60°, enabling the lamp to be looked at in all its magical appeal without the slightest glare outside the cone of light itself.

The top hemisphere is designed to protect the internal components against external agents such as dust and insects. The central 3-spoke aluminium ring is made in-house using latest generation numerical control (CNC) lathes.

The nucleus houses the LED (CRI 97), the heat sink (working temperature: 70° C) and the holographic filter, responsible for producing more uniform light.



In addition to the Modular line, which allows all Limbus's potential to be exploited for fully personalized solutions, the following pre-configured options are available:

- **Limbus Cluster 3:** with a round rosette (diameter: 17.5 cm), three luminaires and a decentring kit for correct anchorage to the ceiling;
- **Limbus Cluster 5:** with a round rosette (diameter: 20 cm), five luminaires and a decentring kit for correct anchorage to the ceiling;
- **Limbus Linear 3:** with a linear rosette (length: 150 cm) and three luminaires;
- **Limbus Linear 5:** with a linear rosette (length: 200 cm) and five luminaires.







# TECHNICAL DETAILS

LIMBUS

Code: 190

## DIMENSIONS



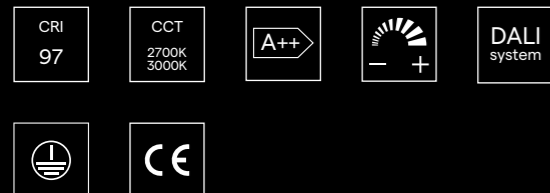
## FINISHING

○ Anodised Black      ● Anodised Brass

## LED SOURCE

<b>Power:</b>	4,5W	4,5W
<b>CCT:</b>	3000	2700
<b>Emitted flux:</b>	350 lm	330 lm
<b>CRI:</b>	97	97

## TECHNICAL DATA



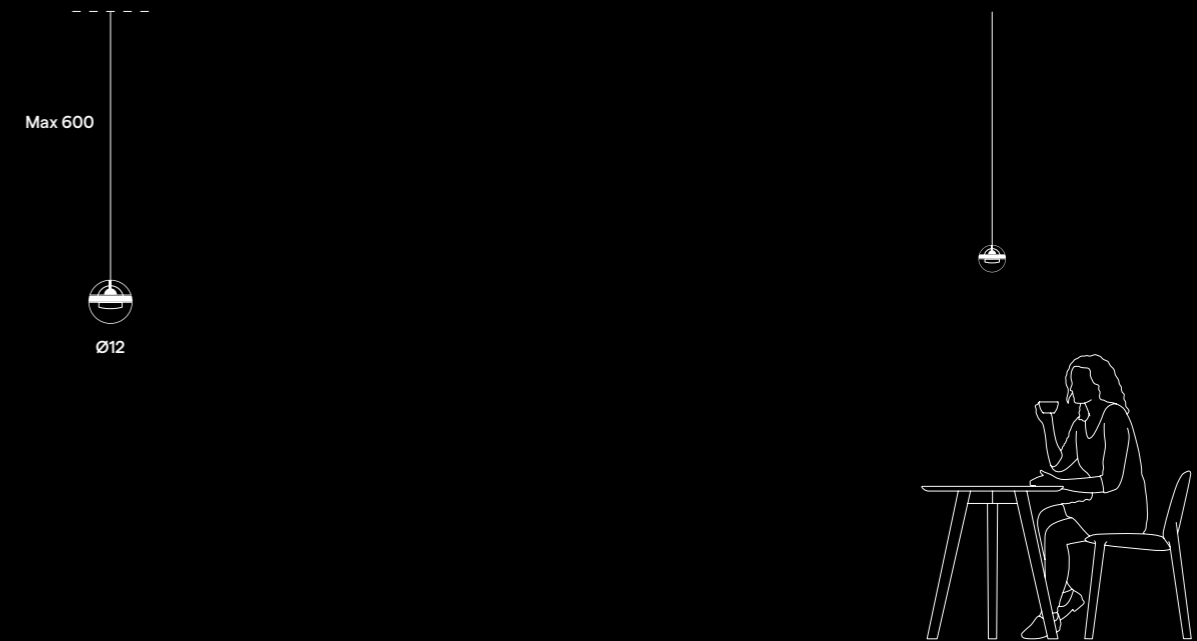
High Colour Rendering Index  
Correlated Color Temperature 3000K or 2700K  
Energy Class A++  
Dimmable  
Dali system compatible  
Insulation Class I  
CE Listed

# TECHNICAL DETAILS

LIMBUS M

Code: 190M

## DIMENSIONS



## FINISHING

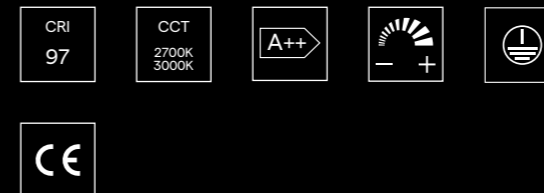
○ Anodised Black      ● Anodised Brass

## LED SOURCE

<b>Power:</b>	4,5W	4,5W
<b>CCT:</b>	3000	2700
<b>Emitted flux:</b>	350 lm	330 lm
<b>CRI:</b>	97	97

24V AC-DC converter required

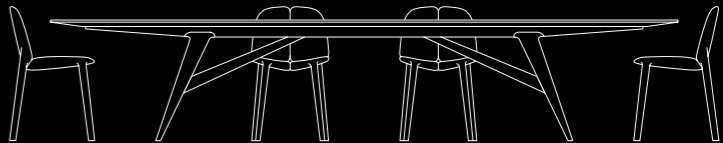
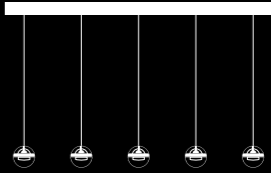
## TECHNICAL DATA



High Colour Rendering Index  
Correlated Color Temperature 3000K or 2700K  
Energy Class A++  
Dimmable  
Insulation Class I  
CE Listed

# TECHNICAL DETAILS

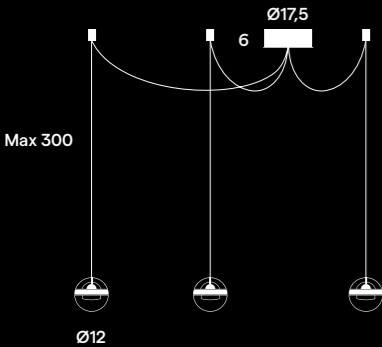
LIMBUS



## DIMENSIONS

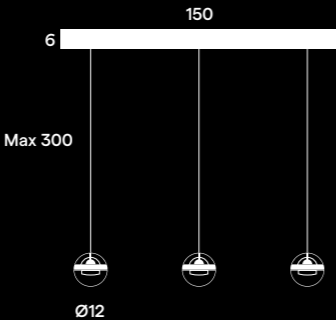
### LIMBUS CLUSTER 3

Code: 190C3



### LIMBUS LINEAR 3

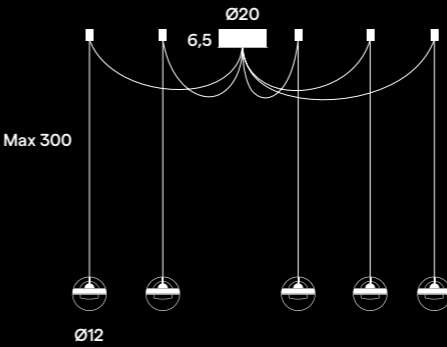
Code: 190L3



## DIMENSIONS

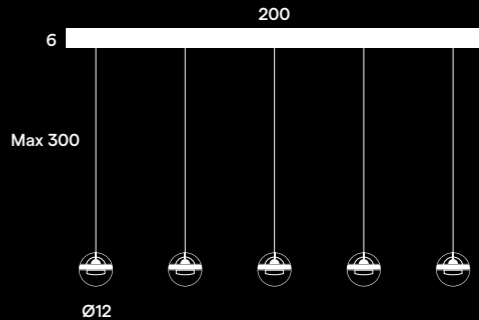
### LIMBUS CLUSTER 5

Code: 190C5



### LIMBUS LINEAR 5

Code: 190L5



## FINISHING

- Anodised Black
- Anodised Brass

## LED SOURCE

<b>Power:</b>	3x4,5W	3x4,5W
<b>CCT:</b>	3000	2700
<b>Emitted flux:</b>	1050 lm	990 lm
<b>CRI:</b>	97	97

## FINISHING

- Anodised Black
- Anodised Brass

## LED SOURCE

<b>Power:</b>	5x4,5W	5x4,5W
<b>CCT:</b>	3000	2700
<b>Emitted flux:</b>	1750 lm	1650 lm
<b>CRI:</b>	97	97

## TECHNICAL DATA

CRI  
97

CCT  
2700K  
3000K

A++

DALI  
system

CE

High Colour Rendering Index  
 Correlated Color Temperature 3000K or 2700K  
 Energy Class A++  
 Dimmable  
 Dali system compatible  
 Insulation Class I  
 CE Listed