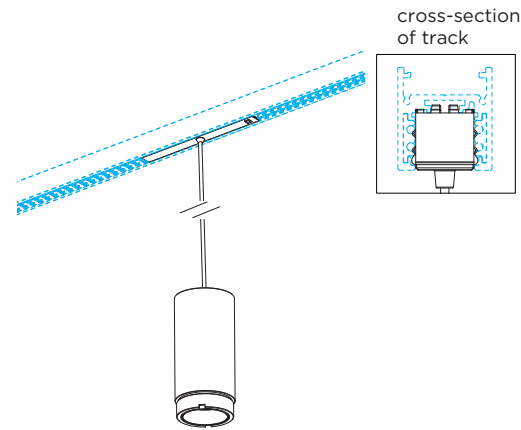
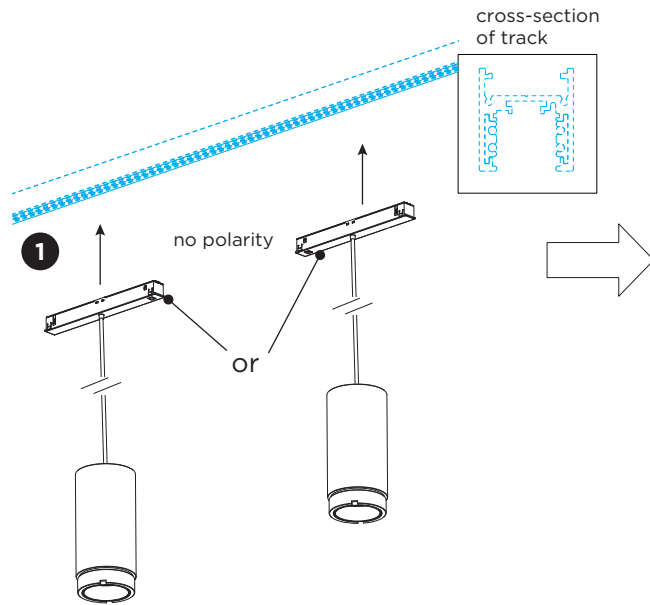
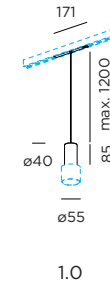


ODREY on track (48V)

INSTALLATION INSTRUCTIONS | APRIL 2023



DIMENSIONS

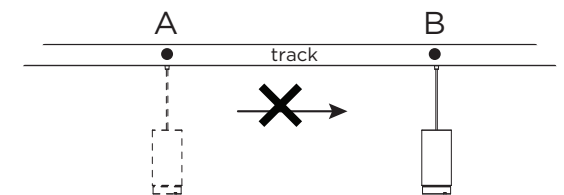
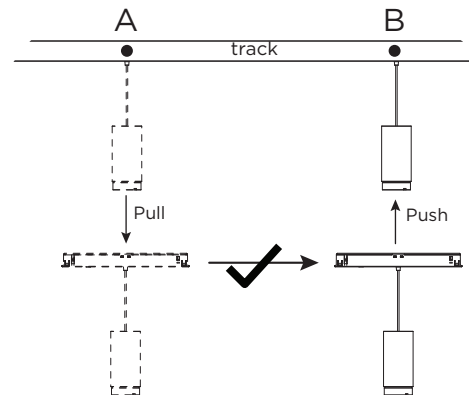
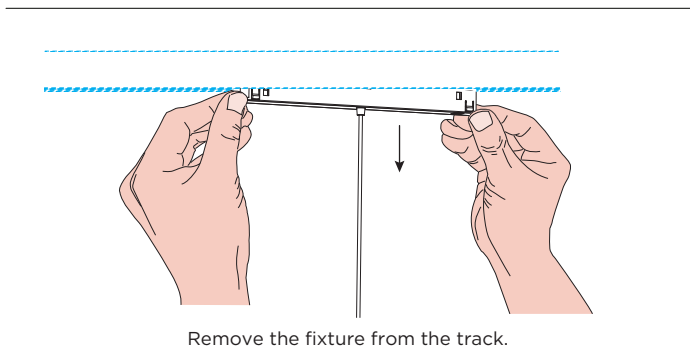


MOUNTING INSTRUCTION

- 1 Push the fixture into the track at the preferred location.



Note: it's not allowed to slide the fixture in the track. If you want to change location of the fixture in the track, please pull the fixture out of the track and install it on the correct position.

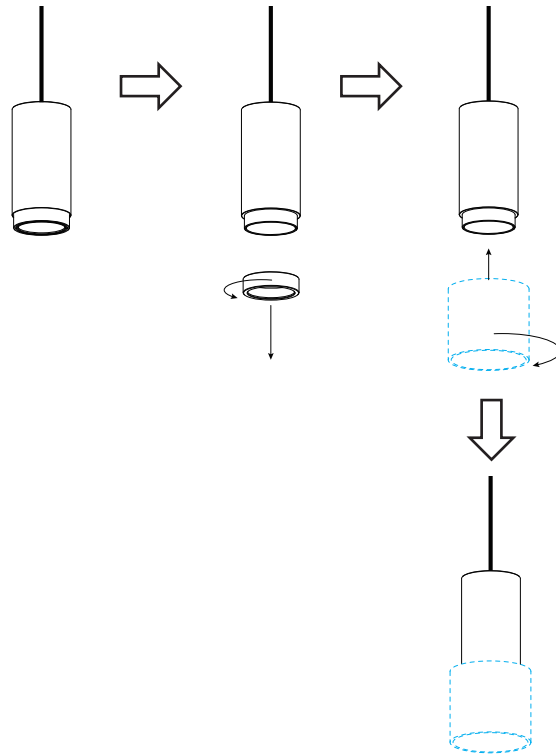


for installation with shade 1.0, please find the details on page 2

ODREY on track (48V)

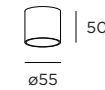
INSTALLATION INSTRUCTIONS | APRIL 2023

installation with shade 1.0

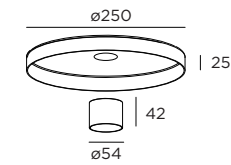


SHADES

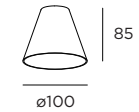
shade 1.0



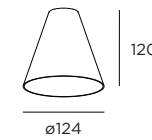
shade 2.0



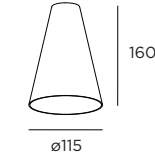
shade 3.0



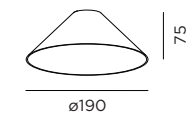
shade 4.0



shade 5.0



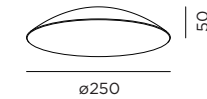
shade 6.0



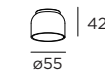
shade 7.0



shade 8.0



inner cover 1.0

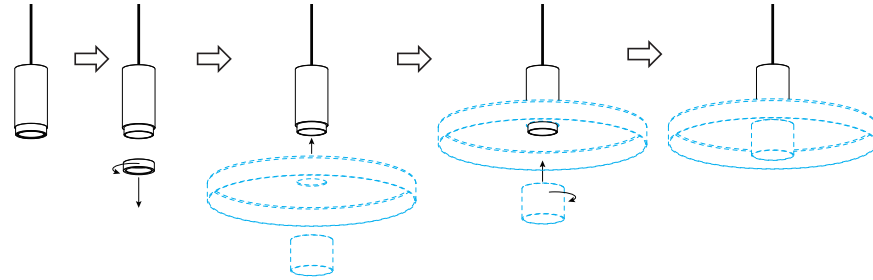


for installation with Shade 2.0 & 3.0-8.0 & shade + inner cover, please find the details on page 3

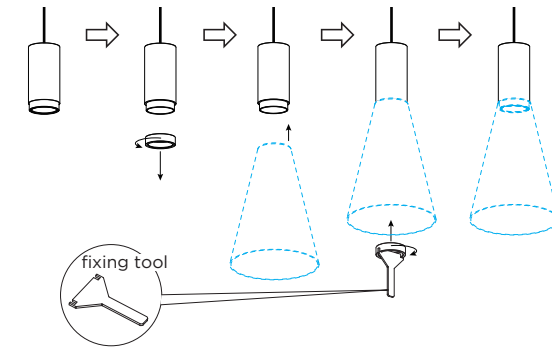
ODREY on track (48V)

INSTALLATION INSTRUCTIONS | APRIL 2023

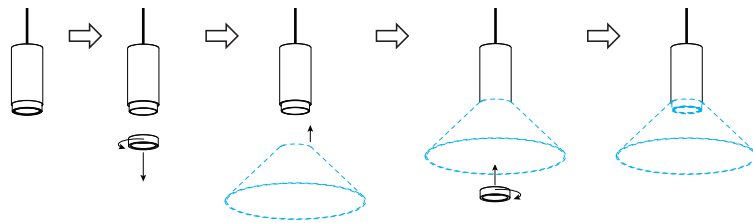
installation with shade 2.0



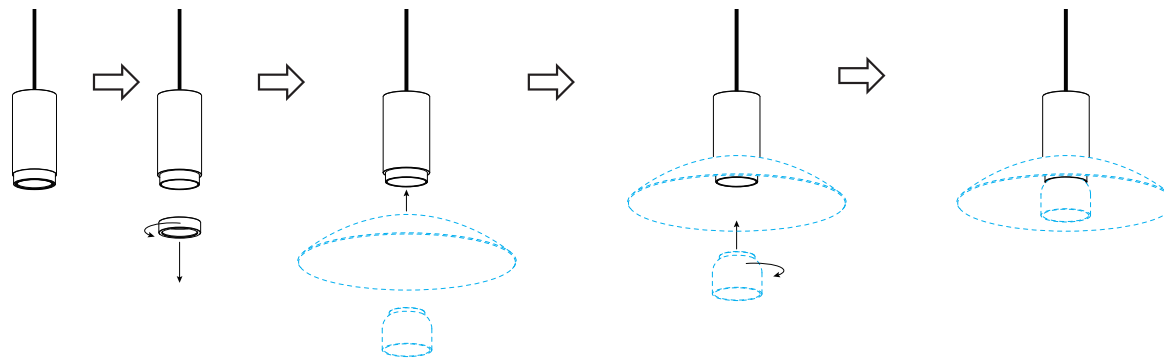
installation with shade 3.0 / 4.0 / 5.0 (always using the fixing tool)



installation with shade 6.0 / 7.0 / 8.0



installation with shade + inner cover

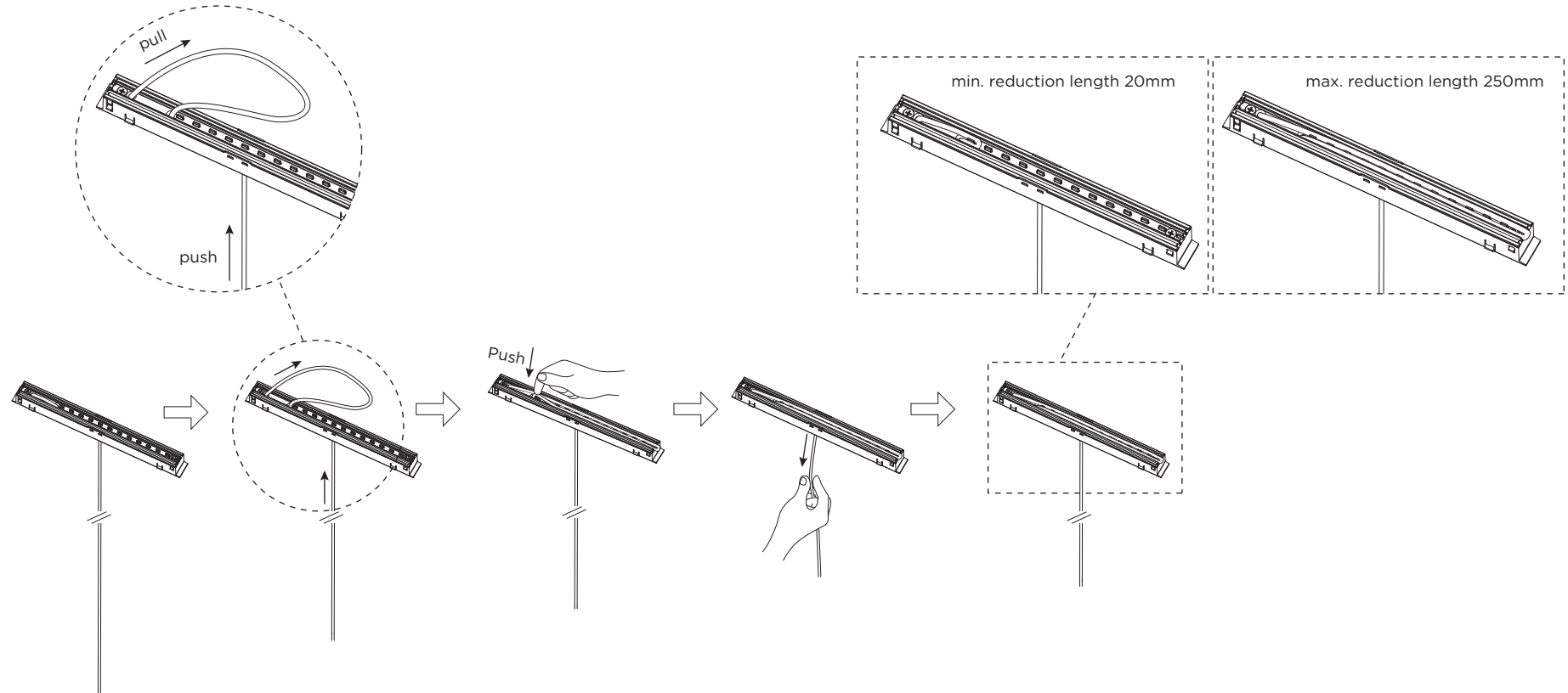


See page 4 for how to shorten the cable.

ODREY on track (48V)

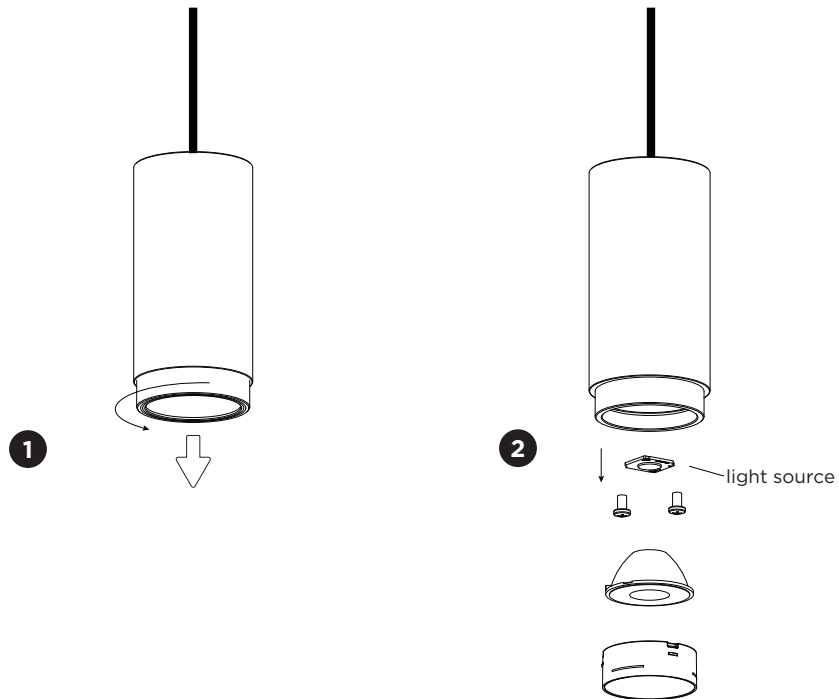
INSTALLATION INSTRUCTIONS | APRIL 2023

Shorten the cable with maximum 250mm:



ODREY on track (48V)

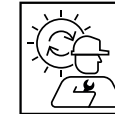
INSTALLATION INSTRUCTIONS | APRIL 2023



DISMOUNTING AND RECYCLING INSTRUCTIONS

Light source

- 1 Unscrew the fixing ring.
- 2 Take out the lens and unscrew the light source to remove it.



The light source is replaceable by an authorized professional.
For advice contact your Wever & Ducré customer service contact point.



This luminaire contains a light source with the energy class E.